

CIVIL IMPROVEMENT PLANS

FOR

ARIZONA CITY ELEMENTARY SCHOOL

ADJACENT WAYS CONSTRUCTION LOCATED IN A PORTION OF SECTION 2, TOWNSHIP 8 SOUTH, RANGE 6 EAST OF THE GILA AND SALT RIVER MERIDIAN, PINAL COUNTY, ARIZONA

DEVELOPER
Toltec School District
3315 N. Toltec Road,
Eloy, AZ 85131
(520) 466-2351
CONTACT: Dr. Jeff Van Handel

CIVIL ENGINEER
Gervasio & Assoc., Inc.
77 E. Thomas Rd., Suite 120
Phoenix, Arizona 85012
(602) 285-1720 Fax (602) 285-1530
CONTACT: Larry Welton, P.E.

G&A GRADING & DRAINAGE

1. Subgrade soil preparation, site grading, fill and compaction shall conform to MAG Section 301.
2. All debris shall be removed from the site.
3. Usable fill material will be stockpiled and located on site per the Developer's directions.
4. No imported material shall be incorporated into the project without prior testing and approval. All import material must be tested for environmental contamination.
5. The site shall be graded to a surface which is reasonably smooth, compacted and free from irregular surface changes.
6. The Contractor shall be responsible for the adjustment to finish grade of all utility valve covers, cleanouts and manhole castings.
7. All walkways and/or A.C. paving located five (5) feet from buildings will be constructed 0.1 feet below finished floors unless noted otherwise.
8. The following Maricopa Association of Governments (MAG) specification shall apply to the grading & drainage plans unless otherwise noted:
 - a. Concrete pavement per MAG Spec. 725.
 - b. Base course per MAG Spec. 310 & 702.2. (A25 mm)
9. Relocate items per MAG Spec. 350. Contractor responsible for fees or relocation costs.
10. Spot elevation shown on plans are finished surface elevations.
11. All elevations shown on detail cut sections are at location indicated on drawings. See spot elevations on plans for other locations.
12. The topographic survey information shown on this drawing was obtained from a Topographic survey prepared by Gervasio & Assoc., Inc., 77 E. Thomas Rd, Suite 120, Phoenix, Arizona, (602) 285-1720.
13. The Contractor shall visit the site to verify the site survey information and observe any changes.

G&A SPECIAL NOTES

1. The Owner/Developer and Engineer assume no liability or responsibility for any requirement to provide on-site retention for public right-of-way drainage runoff.

RETENTION REQUIREMENTS - TOTAL

Per drainage design manual for Pinal County, Arizona (Ch. 2 Hydrology, Volume 2 Design Methodology and Procedures)

V = A(D/12)C

V = Volume of retention required (acre-feet)
C = Runoff factor for tributary areas
P = 100-year, 2-hour rainfall (in inches)
A = Drainage area (acres)

Weighted C:	Area	Coef	Total
Pavement & Roofs			
Gravel Roadways			
Agriculture			
			Total

Weighted C = _____ = _____

A =
D =
C =
V =

RETENTION PROVIDED

Flood irrigation areas = _____ acres = Retention Area Provided

$$D = \frac{V_R}{A_P} = \frac{\text{ac-ft}}{\text{ac}} = \text{ft} < 1.0\text{ft. Therefore no drywells are required.}$$

EARTHWORK QUANTITIES

Cut cubic yards
Fill cubic yards
Refer to G&A General Note No. 2

SHEET INDEX

C1.0 Cover sheet & Civil Notes
C2.0 Adjacent Ways Construction Plans

QUANTITIES

Quantities shown are for permit purposes only and are not for bidding or contracting purposes. The Contractor is responsible for bidding his own quantity take-off.

ABBREVIATIONS

Some abbreviations may not apply to these drawings. For abbreviations not shown refer to MAG Uniform Standard Specifications for Public Works Construction (current edition).

A.P.N.	County Assessor's Parcel Number	(IM)	Inverse measurement
		L.E.	Landscape easement
BPD	Backflow prevention device	MAS.	Masonry
BLDG.	Building	(M)	Measured
BOTT.	Bottom	N.F.	Not found
B/C	Back of curb	N.T.S.	Not to scale
CALC.	Calculated	P.C.	Point of Curvature
(C)	Calculated	P.O.B.	Point of Beginning
C.F.	Cubic feet	P.O.C.	Point of Commencement
CLF	Chain link fence	P	Property line
COR.	Corner	P.T.	Point of Tangency
C.P.S.	Cotton picker spindle	PUE	Public utility easement
D.E.	Drainage easement	(R)	Recorded
D/W	Driveway	RET.	Retention
ELEC.	Electric	SB	Set Back
ELEV.	Elevation	S.F.	Square feet
ESMT.	Easement	S/W	Sidewalk
E/P	Edge of pavement	S	Slope
F.F.	Finished Floor	T.P.O.B.	True Point of Beginning
HWE	High water elevation	TSP	Traffic signal pole
ID.	Identification	U.N.O.	Unless noted otherwise
RD	Roof Drain	W/	With
U/G	Underground	W	Width

DEVELOPER'S AS-BUILT CERTIFICATION

That portion of this project installed in the right-of-way has been completed according to specifications and dimensions shown hereon.

Developer or Representative _____ Date _____

AS-BUILT CERTIFICATION

I hereby certify that the "Record Drawing" measurements as shown hereon were made under my supervision or as noted and are correct to the best of my knowledge and belief.

Registered Land Surveyor _____ Date _____

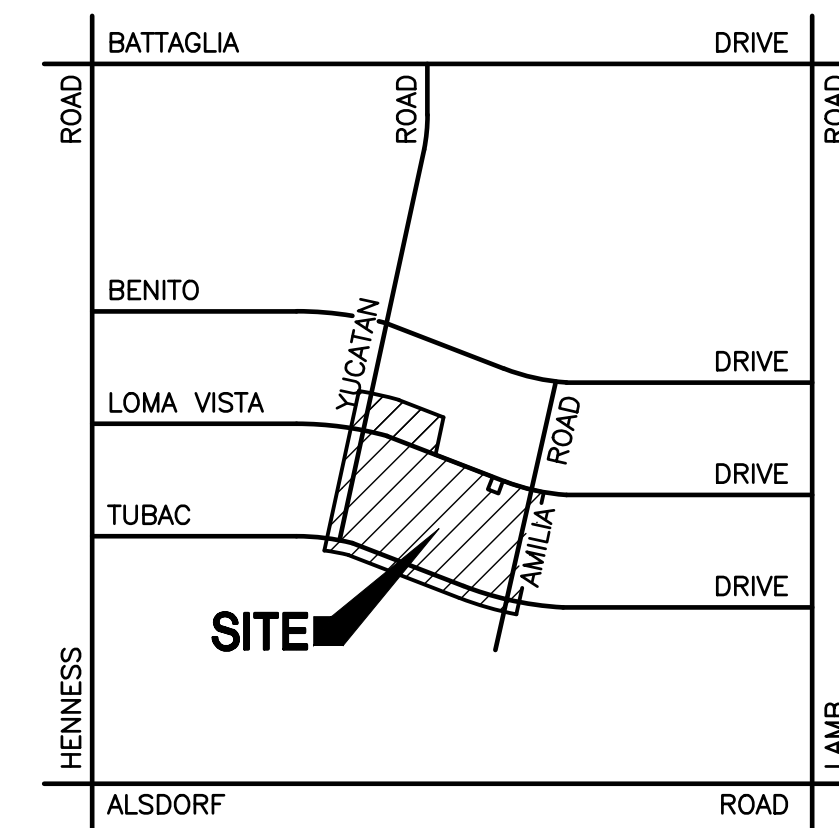
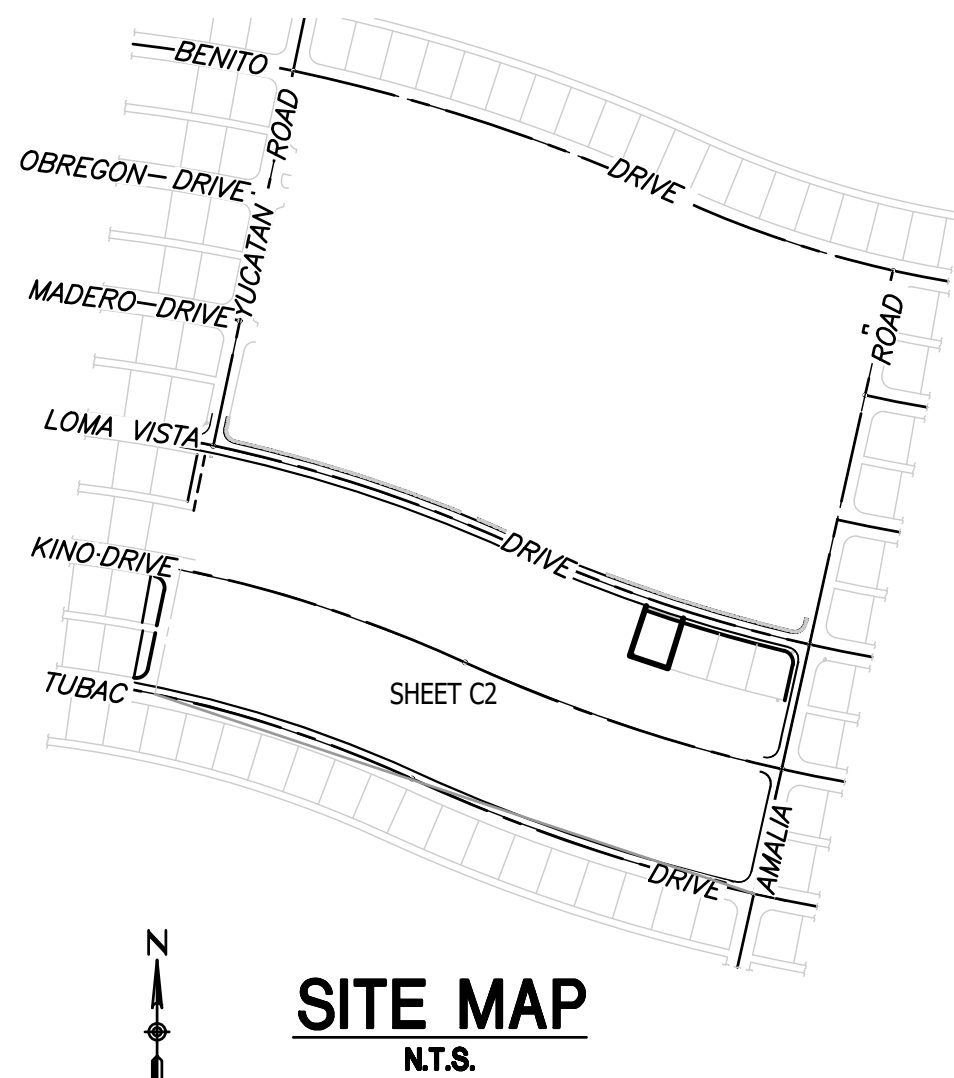
Registration Number _____

G&A GENERAL NOTES

1. If the Contractor finds any discrepancy or omission, the engineer shall be notified before any interpretation is made.
2. Quantities shown are for permit purposes only and are not for bidding or contracting purposes. The Contractor is responsible for bidding his own quantity take-off.
3. Building materials containing asbestos will not be used on this project.
4. The Contractor shall make no claim for quantity adjustment unless all construction survey stakes are maintained for verification.
5. Nothing in the contract documents shall create any contractual relationship between the Engineer and the Contractor or the Engineer and the Subcontractor.
6. The Engineer will not be responsible for construction or safety means, methods, techniques, sequences, procedures utilized in connection with this project by the Contractor or Subcontractors.
7. Change orders shall be executed in writing by the Owner or his representative. Verbal changes will not be honored.
8. It will be the Contractor's responsibility to locate all existing underground utility facilities both horizontally and vertically prior to construction and take all necessary precautions to avoid any damage to existing underground facilities. Call the Blue Stake Center (602) 263-1100 or a private underground utility location company 48 hours prior to excavating. The Engineer and/or Owner cannot guarantee any elevations or locations of existing underground utilities shown on these plans.
9. Utility companies serving this area are:
Water: Arizona Water Co Electric: APS Communications: CenturyLink
Sewer: Gas:
10. The existing background information on this drawing was obtained from field survey and aerial photos.
11. The Contractor shall visit the site to verify the site survey information and observe any changes.

PINAL COUNTY GENERAL NOTES

1. Developer shall obtain a Pinal County Right of Way Permit prior to any work being performed within the county right of way. Contact the Pinal county Public Works Inspection Section at least 7 days in advance.
2. All work required to complete the construction within the County right-of-way covered by these plans shall be in accordance with the Pinal county Design manual and applicable MAG Standards Specifications and Details.
3. All frames, covers, valve boxes and manhole covers shall be adjusted to finished grade.
4. Contractor is responsible for Blue Stake marking as construction is in progress.
5. No trench is to be left open/uncovered after working hours.
6. Traffic control and barricading shall be according to the Manual on Uniform Traffic Control Devices and/or Pinal county requirements.
7. An approved set of plans shall be maintained on the job site at all times that work is in progress. Deviation from the plans shall not be allowed without an approved plan revision.
8. Any work performed without the approval of the County engineer and/or all work and material not in conformance with the specifications is subject to removal and replacement at the Contractor's expense.



SITE MAP
N.T.S.

VICINITY MAP
N.T.S.

FIELDBOOK 296, PAGES 1-28
FIELDBOOK 296, PAGES 127-141



REVISIONS	BY

This drawing is an instrument of service. It is the property of GERVASIO & ASSOC. INC. and may not be reproduced or reproduction hereof used without permission.

GERVASIO & ASSOC. INC.
CONSULTING ENGINEERS
77 E. THOMAS ROAD, SUITE 120
PHOENIX, ARIZONA 85012
(602) 285-1720 FAX 285-1530

PRELIMINARY

PRELIMINARY - NOT FOR CONSTRUCTION

COVER SHEET & CIVIL NOTES

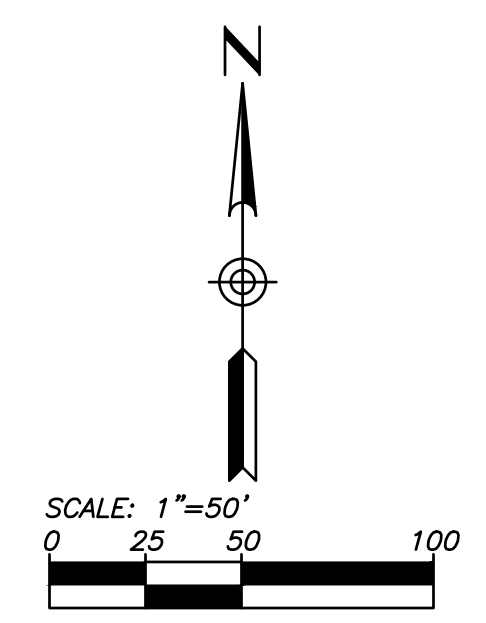
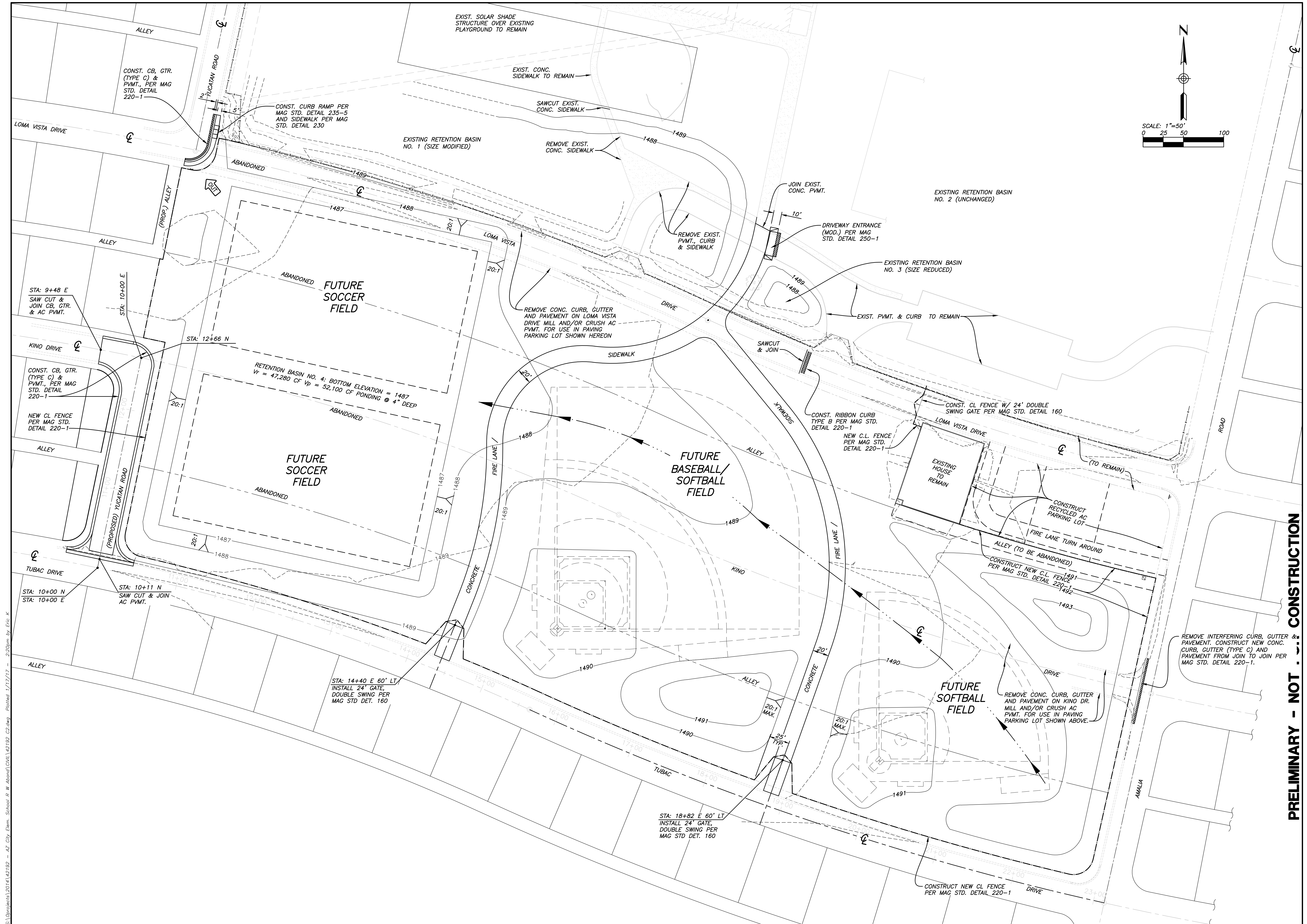
OF: ARIZONA CITY ELEMENTARY SCHOOL
12115 BENITO DRIVE, ARIZONA CITY, AZ 85123

FOR: TOLTEC SCHOOL DISTRICT
3315 N. TOLTEC ROAD, ELOY, AZ 85131

Date	1/17/17
Scale	AS NOTED
Drawn	EMK
Checked	LW
Job	4219.2
Sheet	

C1

of 2 Sheets



REVISIONS	BY

This drawing is an instrument of service. It is the property of GERVASIO & ASSOC. INC. and may not be reproduced or reproduction hereof used without permission.

GERVASIO & ASSOC. INC.
 CONSULTING ENGINEERS
 77 E. THOMAS ROAD, SUITE 120
 PHOENIX, ARIZONA 85012
 (602) 285-1720 FAX 285-1530

PRELIMINARY - NOT FOR CONSTRUCTION

ADJACENT WAYS CONSTRUCTION PLAN

OF: **ARIZONA CITY ELEMENTARY SCHOOL**
 12115 BENITO DRIVE, ARIZONA CITY, AZ 85123

FOR: **TOLTEC SCHOOL DISTRICT**
 3315 N. TOLTEC ROAD, ELOT, AZ 85131

Date	1/17/17
Scale	1"=50'
Drawn	EMK
Checked	LW
Job	4219.2
Sheet	C2

of 2 Sheets

G&A #4219.2

S:\Projects\2014\42192 - AZ City Elem. School R. W. Abama\Civil\42192_C2.dwg Plotted 1/17/17 - 2:20pm by Eric K.