

CHANGE ORDER REQUEST

To:

No. COR 003R-3

Date

Project # 180046

Project Name Tolleson Union High School No 7

Project Manager Connor Lewis

Scope Description

Additional Days

Offsite concrete revisions as required by the City of Avondale's Planning & Zoning Department in Right of Way, adjacent to the school's property, to allow for pedestrian/vehicular access and egress from the school site along 119th Avenue, Encanto Blvd & Avondale Blvd.

Job Code	Cost Code	Description	Amount
180046-15	03100	LR Cowan - Offsite Concrete Revisions per ASI 3	34,094.00
180046-15	70100	Liability Insurance	340.94
180046-15	70400	Builders Risk Insurance	120.52
180046-15	70500	Payment & Performance Bonds	380.11
180046-15	79999	Contractor Fee	1,900.50
180046-15	70600	Gross Receipts Tax	2,107.02

Change Order Request Total \$ 38,943.09

NOTE:

Unless clarified above, CHASSE Building Team reserves the right to evaluate and/or revise the scheduled completion date and review general conditions for the project based on the cumulative impact of this and other changes in the future.

CONTRACTOR

OWNER

ARCHITECT

CHASSE Building Team

Submitted By:

Approved By:

Approved By:

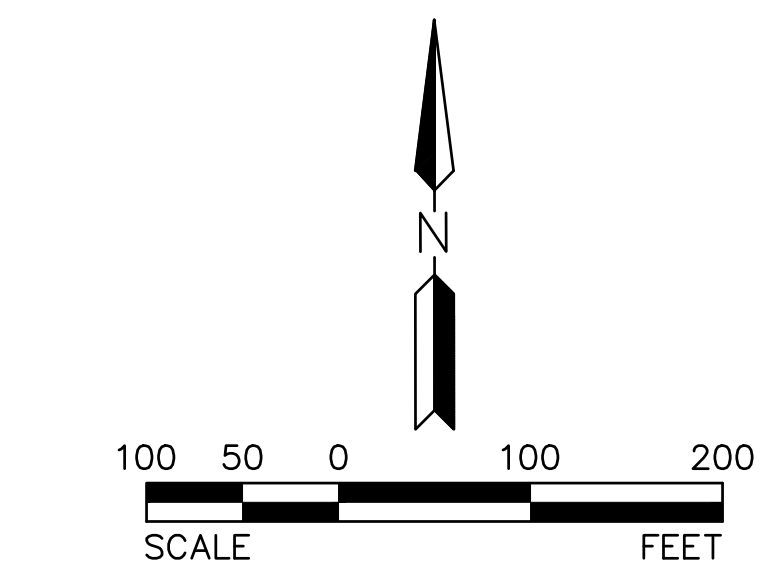
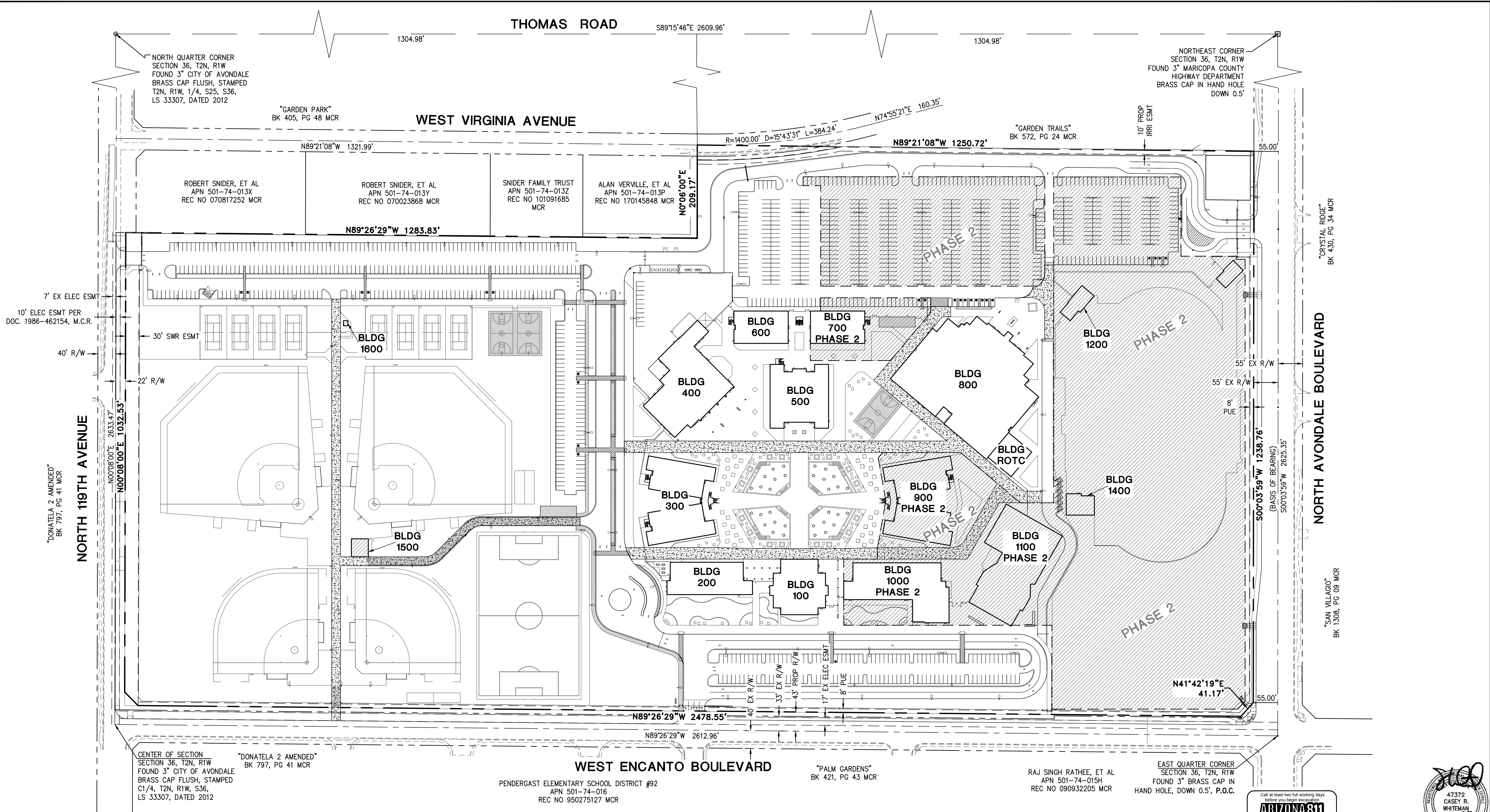
Connor Lewis

cc:

Date: _____ Date: _____



© Copyright, YYYY, HILGARTWILSON, LLC - This plan document set is the sole property of HILGARTWILSON, LLC. No alterations to these plans, other than adding "as-built" information, are allowed by anyone other than authorized HILGARTWILSON, LLC employees.



FOR REFERENCE ONLY

Call at least two full working days before you begin excavation!

ARIZONA 811

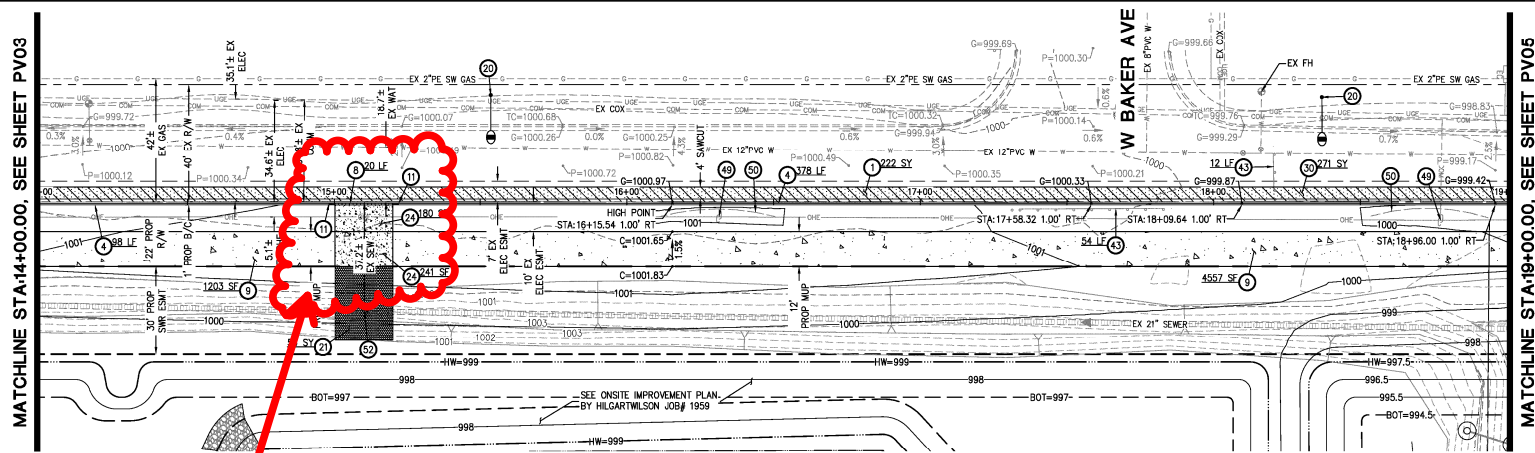
Arizona Blue State, Inc.

Dial 8-1-1 or 1-800-STAKE-IT (1-800-782-5348)

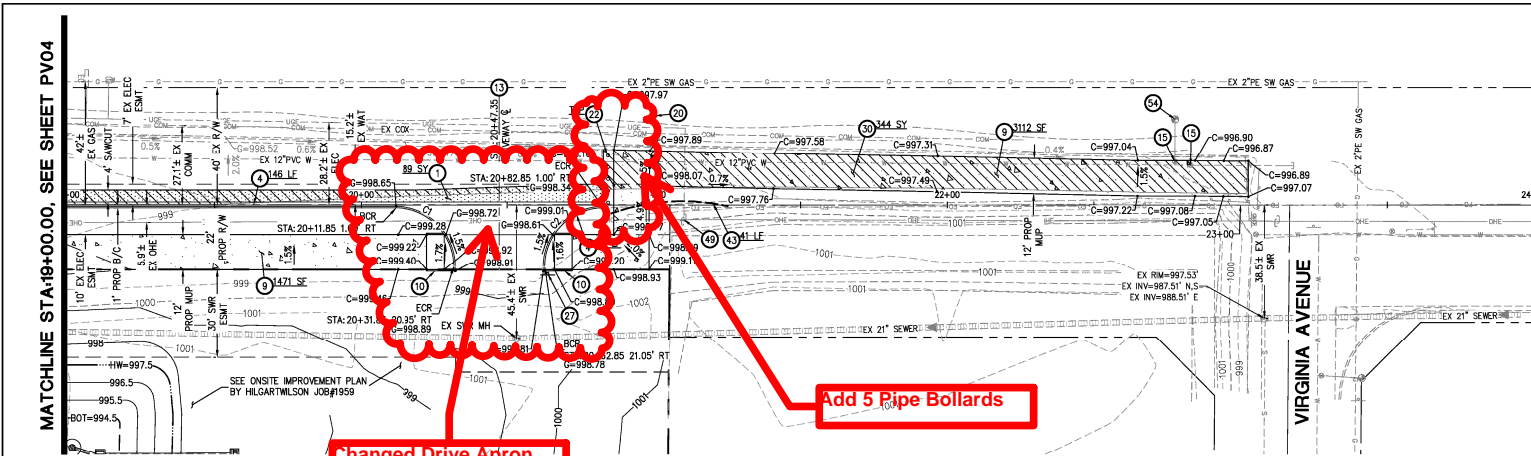
In Maricopa County, (602) 253-1100

47372
CASEY R.
WHITEMAN
8/23/18
ARIZONA U.S.A.
Expire 03/31/2020

TOLLESON HIGH SCHOOL #7			
11620 WEST ENCANTO BLVD AVONDALE, ARIZONA			
OVERALL CIVIL SITE PLAN			
PROJ. NO.	1959		
DATE:	AUGUST 2018		
SCALE:	1" = 100'		
DESIGNED:	JW	DRAWN:	CM
APPROVED:	CW		
REV.			
			DWG. NO.
			C1.0
			SHT. X OF X

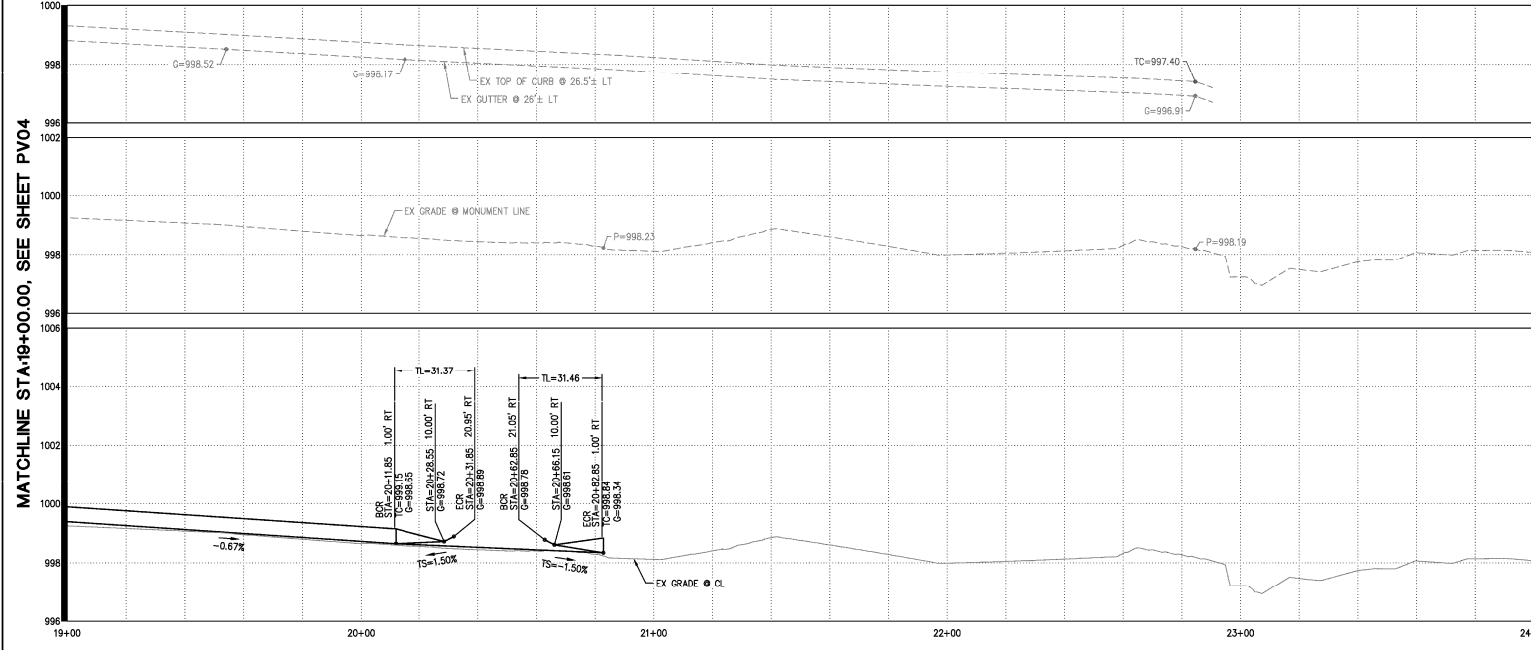
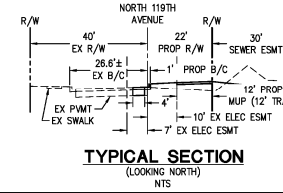


© Copyright, 2018, HILGARTWILSON, LLC - This plan document set is the sole property of HILGARTWILSON, LLC. No alterations to these plans, other than adding "as-built" information, are allowed by anyone other than authorized HILGARTWILSON, LLC employees.

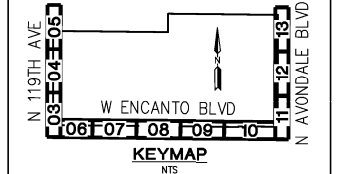


BACK OF CURVE TABLE			
CURVE #	RADIUS	DELTA	LENGTH
C1	20.00'	89°52'00"	31.37'
C2	20.00'	90°08'00"	31.46'

NORTH 119TH AVENUE



- PAVING CONSTRUCTION NOTES
1. INSTALL 3.5" AC ON 10" ABC OR MATCH IN KIND, WHICHEVER IS GREATER. SEE DETAIL 1, SHEET PV02 AND COA STD DTL A1102 FOR ADDITIONAL INFORMATION. 89 SY
 2. CONSTRUCT 6" VERTICAL CURB AND GUTTER PER MAG STD DTL 220-1, TYPE 'A'. 180 LF
 3. CONSTRUCT 4" THICK CONCRETE SIDEWALK & JOINTS PER MAG STD DTL 230 AND MAG SPECS 340, 725 & 729, WIDTH AS SHOWN. 4583 SF
 4. CONSTRUCT SIDEWALK RAMP PER MAG STD DTL 236-1. 2 EA
 5. CONSTRUCT DRIVEWAY PER COA STD DTL A1251-2, MODIFIED AS SHOWN. 1 EA
 6. ADJUST WATER FRAME AND COVER PER COA STD DTL 1310. 2 EA
 7. PROPOSED STREET LIGHT. SEE STREET LIGHT PLAN BY WRIGHT ENGINEERING. 1 EA
 8. INSTALL 4" BOLLARD PER MAG STD DTL 140 TYPE-1. 5 EA
 9. INSTALL STREET SIGN BASE PER COA STD DTL A1030. 1 EA
 10. SAWCUT & REMOVE EXISTING AC PAVEMENT, 2' MIN. 344 SY
 11. REMOVE EXISTING BARRICADE. 41 LF
 12. PROTECT EXISTING POWER POLE IN PLACE DURING CONSTRUCTION. 1 EA
 13. PROTECT EXISTING UTILITY DURING CONSTRUCTION.



Call us before you start working on any project. We'll be there to help you every step of the way.

ARIZONA 811
Arizona's 811 Service
811-ARIZONA
811-ARIZONA

47372 CASEY R. WILSON
Professional Engineer
No. 12345

TOLLESON HIGH SCHOOL #7
NWC AVONDALE BLVD & ENCANTO BLVD
AVONDALE, ARIZONA

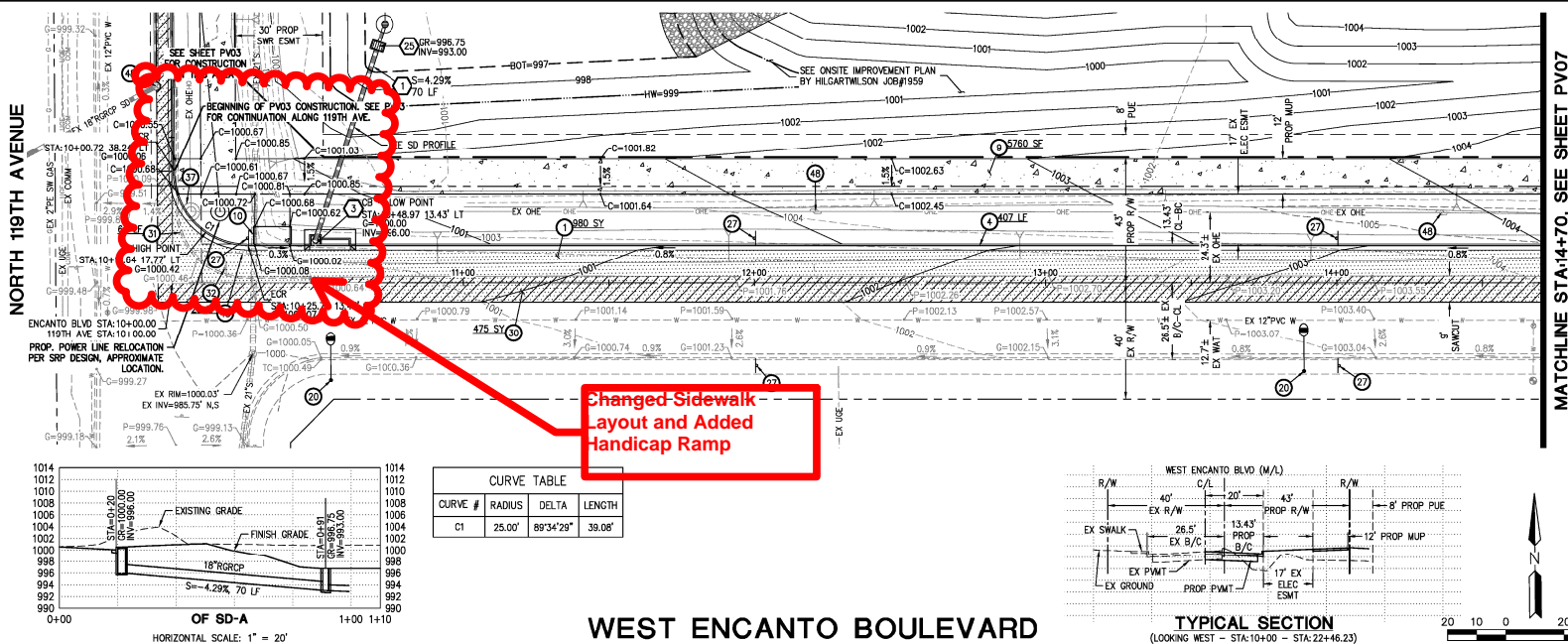
OFFSITE PAVING PLAN

PROJ. NO.	1959
DATE:	AUGUST 2018
SCALE:	1"=20'
DESIGNED:	JW
DRAWN:	CM
APPROVED:	CW
REV.	

PV05

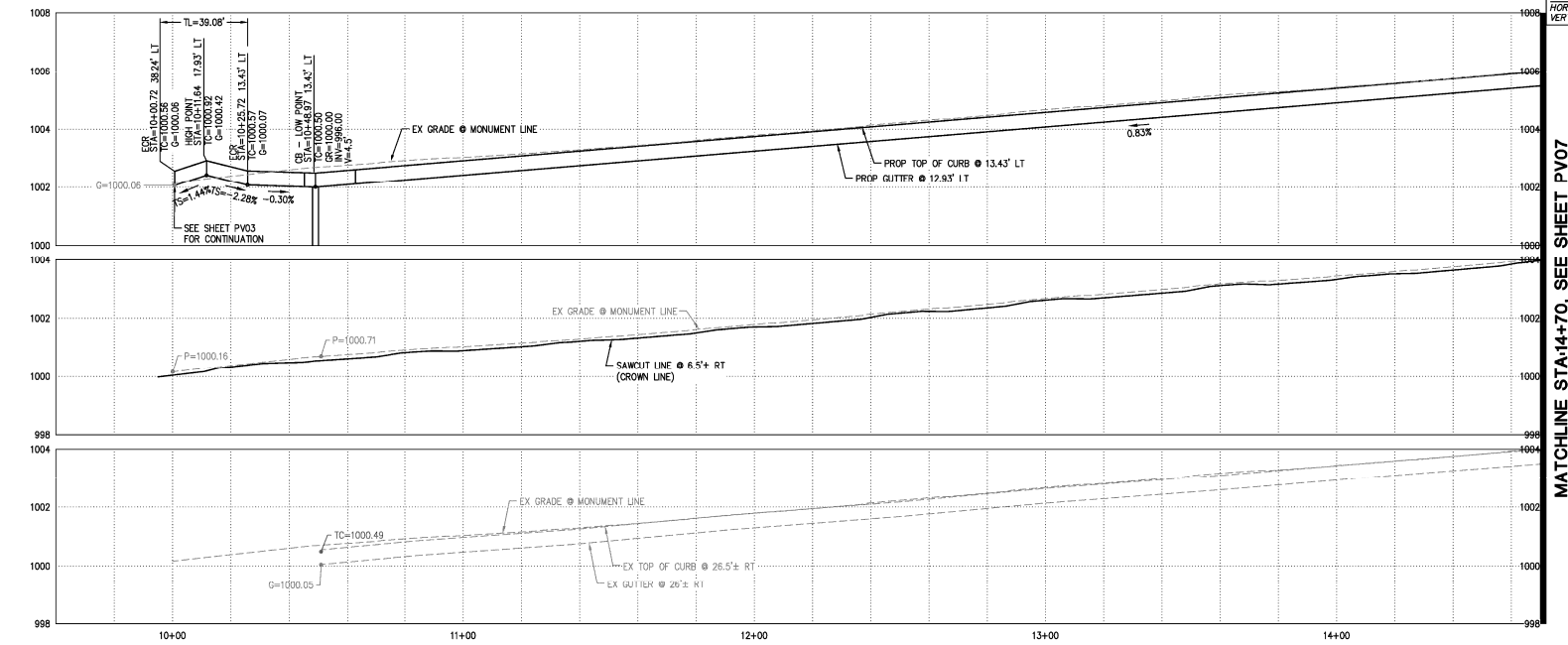
SHT. 5 OF 16

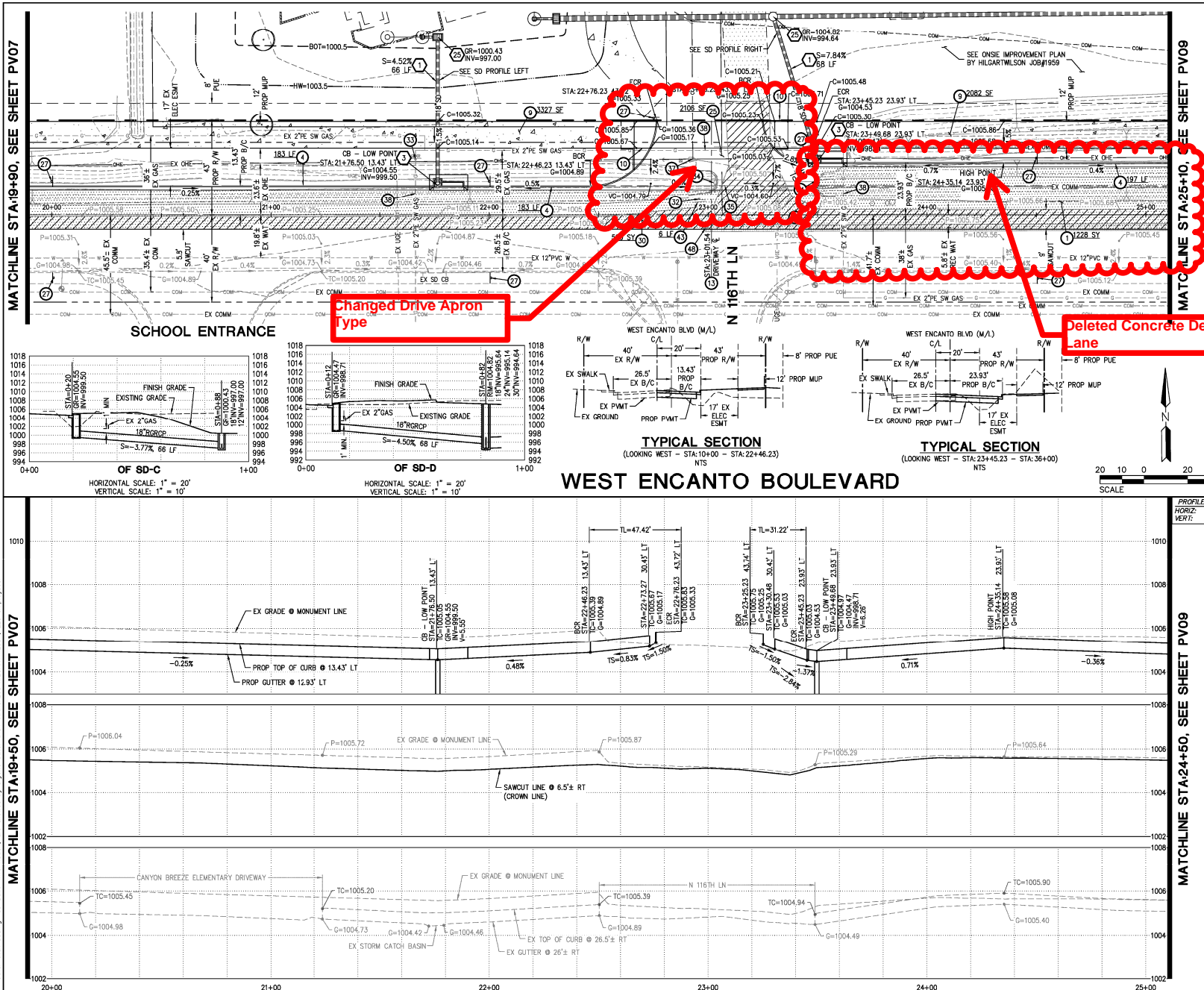
U:\1800\1959\ENGR\PLANS\CD\5\Offsite\1959 - PV05 OPP.dwg 8/23/2018 11:38 AM



MATCHLINE STA:14+70, SEE SHEET PV07

MATCHLINE STA:14+70, SEE SHEET PV07





PAVING CONSTRUCTION NOTES

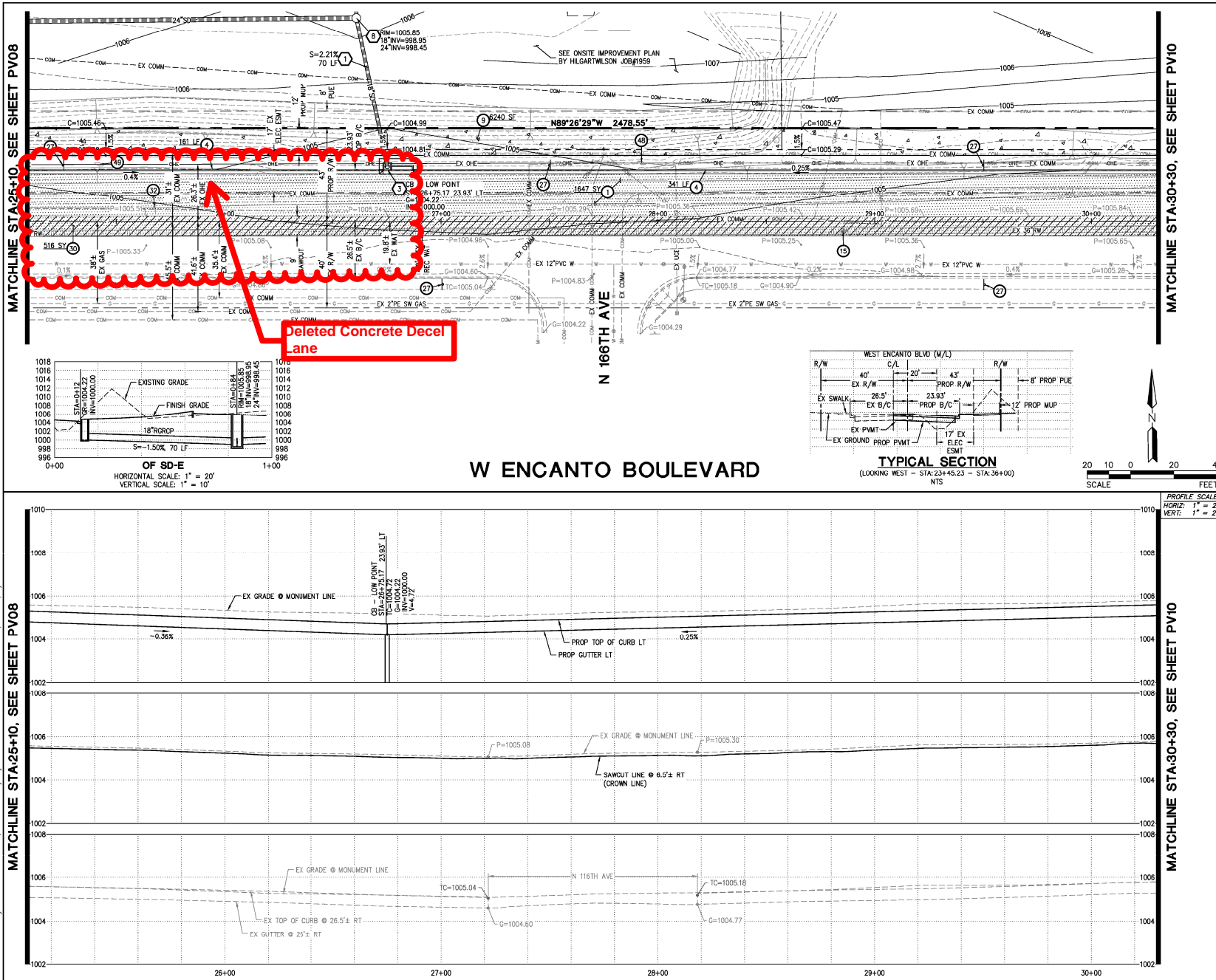
1. INSTALL 3.5" AC ON 10" ABC OR MATCH IN KIND, WHICHEVER IS GREATER. SEE DETAIL 1, SHEET PV02 AND COA STD DTL A1102 FOR ADDITIONAL INFORMATION. 1228 SY
2. CONSTRUCT 6" VERTICAL CURB AND GUTTER PER MAG STD DTL 220-1, TYPE 'A'. 563 LF
3. CONSTRUCT 4" THICK CONCRETE SIDEWALK & JOINTS PER MAG STD DTL 230 AND MAG SPECS 340, 725 & 729, WIDTH AS SHOWN. 5409 SF
4. CONSTRUCT SIDEWALK RAMP PER MAG STD DTL 236-1. 2 EA
5. CONSTRUCT DRIVEWAY PER COA STD DTL A1251-2, MODIFIED AS SHOWN. 1 EA
6. CONSTRUCT 9" THICK CONCRETE PER COA STD DTL A1258 DTL. 2106 SF
7. INSTALL STREET SIGN BASE PER COA STD DTL A1030. 8 EA
8. SAWCUT & REMOVE EXISTING AC PAVEMENT, 2' MIN. 560 SY
9. RELOCATE EXISTING SIGN. SEE SIGNING AND STRIPING PLAN. 2 EA
10. EXISTING GAS MARKER, GAS LINE OFFSET FROM THIS LOCATION. CONTRACTOR TO COORDINATE WITH KINDER MORGAN / EL PASO FOR RELOCATION OF SIGN AND EXACT LOCATION. NOTIFY ENGINEER OF ANY ISSUES PRIOR TO TRENCHING IN THIS AREA. 1 EA
11. EXISTING HEADWALL REMOVAL PER SRP DESIGN. 1 EA
12. EXISTING IRRIGATION PIPE REMOVAL PER SRP DESIGN. 1 EA
13. CONTRACTOR TO COORDINATE WITH UTILITY COMPANY PRIOR TO REMOVAL / RELOCATION. 1 EA
14. CAUTION!! EXISTING GAS LINE. CONTRACTOR TO COORDINATE WITH KINDER MORGAN / EL PASO FOR EXACT LOCATION. NOTIFY ENGINEER OF ANY ISSUES PRIOR TO TRENCHING IN THIS AREA. 1 EA
15. REMOVE EXISTING BARRICADE. 6 LF
16. PROTECT EXISTING STORM PIPE MANHOLE IN PLACE DURING CONSTRUCTION. ADJUST FRAME AND COVER PER MAG STD DTL 422. 1 EA
17. STORM DRAIN CONSTRUCTION NOTES
18. INSTALL 18" ROPR, CLASS IV PER MAG SPEC 735. TRENCH EXCAVATION, BACKFILLING AND COMPACTION PER MAG SPEC 601. 134 LF
19. CONSTRUCT CATCH BASIN PER COA STD DTL A1633. INSTALL STORM DRAIN MEDALLIONS PER COA STD DTL A1500-1. 2 EA
20. CONSTRUCT CATCH BASIN PER MAG STD DTL 535. 2 EA

TOLLESON HIGH SCHOOL #7
NWC AVONDALE BLVD & ENCANTO BLVD
AVONDALE, ARIZONA

OFFSITE PAVING PLAN

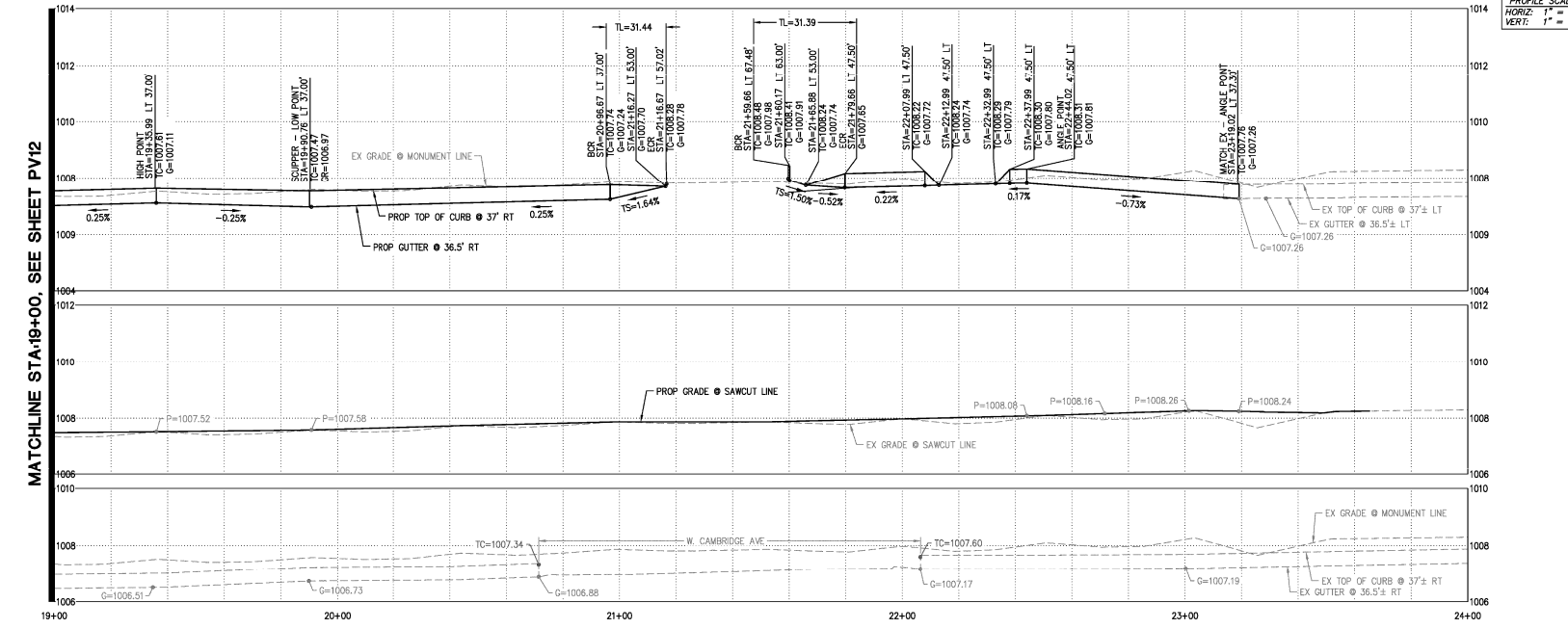
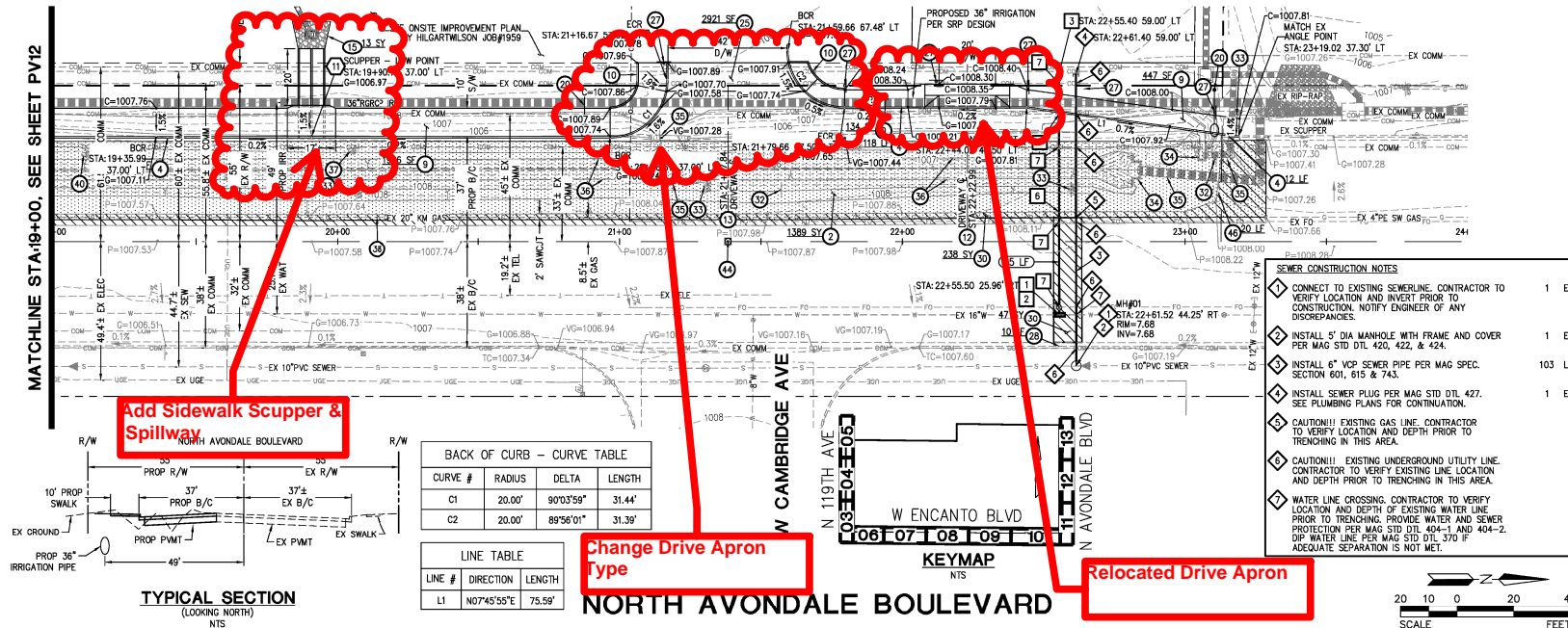
PROJ. NO. 1959
DATE: AUGUST 2018
SCALE: 1" = 20'
DESIGNED: JW DRAWN: CM APPROVED: CW
REV. _____
PV08
DWG. NO. _____
SHT. 8 OF 16

U:\1900\1959\ENGR\PLANS\CD\Site\1959 - PV08 OFF.dwg 8/23/2018 2:15 PM



PAVING CONSTRUCTION NOTES		
1	INSTALL 3.5" AC ON 10" ABC OR MATCH IN KIND, WHICHEVER IS GREATER. SEE DETAIL 1, SHEET PV02 AND COA STD DTL A1102 FOR ADDITIONAL INFORMATION.	1647 SY
4	CONSTRUCT 6" VERTICAL CURB AND GUTTER PER MAG STD DTL 220-1, TYPE 'A'.	502 LF
9	CONSTRUCT 4" THICK CONCRETE SIDEWALK & JOINTS PER MAG STD DTL 230 AND MAG SPECS 340, 725 & 729, WIDTH AS SHOWN.	6240 SF
13	ADJUST WATER FRAME AND COVER PER COA STD DTL 1310.	1 EA
27	INSTALL STREET SIGN BASE PER COA STD DTL A1030.	5 EA
30	SAWCUT & REMOVE EXISTING AC PAVEMENT, 2" MIN. PER MAG STD DTL 422.	516 SY
32	RELOCATE EXISTING SIGN, SEE SIGNING AND STRIPING PLAN.	1 EA
48	PROTECT EXISTING STORM PIPE MANHOLE IN PLACE DURING CONSTRUCTION, ADJUST FRAME AND COVER PER MAG STD DTL 422.	1 EA
49	PROTECT EXISTING POWER POLE IN PLACE DURING CONSTRUCTION.	1 EA
STORM DRAIN CONSTRUCTION NOTES		
1	INSTALL 18" RORCP, CLASS IV PER MAG SPEC 735, TRENCH EXCAVATION, BACKFILLING AND COMPACTION PER MAG SPEC 601.	70 LF
3	CONSTRUCT CATCH BASIN PER COA STD DTL A1533, INSTALL STORM DRAIN MEDALLIONS PER COA STD DTL A1500-1, L=17.	1 EA
8	INSTALL STORM DRAIN MANHOLE PER MAG STD DTL 520 & 522 WITH 30" FRAME AND COVER PER MAG STD DTL 424.	1 EA

MATCHLINE STA:19+00, SEE SHEET PV12



- | PAVING CONSTRUCTION NOTES | | |
|--------------------------------|---|---------|
| 2 | INSTALL 5" AC ON 12" ABC OR MATCH IN KIND, WHOEVER IS GREATER, SEE DETAIL 2, SHEET P/202 AND COA STD DTL A1106 FOR ADDITIONAL INFORMATION. | 1389 SY |
| 4 | CONSTRUCT 6" VERTICAL CURB AND GUTTER PER MAG STD DTL 220-1, TYPE "A". | 365 LF |
| 9 | CONSTRUCT 4" THICK CONCRETE SIDEWALK & JOINTS PER MAG STD DTL 206-1 & MAG SPECS 340, 725 & 729, WIDTH AS SHOWN. | 2547 SF |
| 10 | CONSTRUCT SIDEWALK RAMP PER MAG STD DTL 236-1. | 2 EA |
| 16 | CONSTRUCT 20' DRIVEWAY PER COA STD DTL A1250-2. | 1 EA |
| 19 | CONSTRUCT DRIVEWAY PER COA STD DTL A1251-2, MODIFIED AS SHOWN. | 1 EA |
| 20 | PROPOSED STREET LIGHT. SEE STREET LIGHT PLAN BY WRIGHT ENGINEERING. | 2 EA |
| 26 | CONSTRUCT 9" THICK CONCRETE PER COA STD DTL A1258 DTL. | 2921 SF |
| 27 | INSTALL STREET SIGN BASE PER COA STD DTL A1030. | 6 EA |
| 28 | SAW CUT, REMOVE & REPLACE EXISTING CURB AND GUTTER TO MATCH IN KIND. | 10 LF |
| 30 | SAW CUT, REMOVE EXISTING AC PAVEMENT, 2" MIN. | 285 SY |
| 32 | RELOCATE EXISTING SIGN. SEE SIGNING AND STRIPING PLAN. | 2 EA |
| 33 | EXISTING GAS MARKER. GAS LINE OFFSET FROM THIS LOCATION. CONTRACTOR TO COORDINATE WITH KINDER MORGAN / EL PASO FOR RELOCATION OF SIGN AND EXACT LOCATION. NOTIFY ENGINEER OF ANY ISSUES PRIOR TO TRENCING IN THIS AREA. | 4 EA |
| 34 | EXISTING HEADWALL REMOVAL PER SRP DESIGN. | |
| 35 | EXISTING IRRIGATION PIPE REMOVAL PER SRP DESIGN. | |
| 36 | EXISTING CONCRETE CHANNEL LINING REMOVAL PER SRP DESIGN. | |
| 37 | CONTRACTOR TO COORDINATE WITH UTILITY COMPANY PRIOR TO REMOVAL / RELOCATION. | |
| 38 | CAUTION!!! EXISTING GAS LINE. CONTRACTOR TO COORDINATE WITH KINDER MORGAN / EL PASO FOR EXACT LOCATION. NOTIFY ENGINEER OF ANY ISSUES PRIOR TO TRENCING IN THIS AREA. | |
| 40 | EXISTING WATER SERVICE STUB. CONTRACTOR TO COORDINATE WITH CITY PRIOR TO REMOVAL / RELOCATION. | 1 EA |
| 44 | CONTRACTOR TO PROTECT EXISTING MONUMENT IN PLACE DURING CONSTRUCTION. | 1 EA |
| 46 | REMOVE EXISTING BARRICADE. | 20 LF |
| WATER CONSTRUCTION NOTES | | |
| 1 | CONNECT TO EXISTING WATERLINE. CONTRACTOR TO VERIFY LOCATION PRIOR TO CONSTRUCTION AND NOTIFY ENGINEER OF ANY DISCREPANCIES. | 1 EA |
| 2 | INSTALL 2" SERVICE LINE & 2" METER PER COA STD DTL A1006. | 1 EA |
| 3 | INSTALL CURB STOP WITH FLUSHING PIPE PER MAG STD DTL 390. | 1 EA |
| 6 | CAUTION!!! EXISTING GAS LINE. CONTRACTOR TO VERIFY LOCATION AND DEPTH PRIOR TO TRENCING IN THIS AREA. | |
| 7 | CAUTION!!! EXISTING UNDERGROUND UTILITY LINE. CONTRACTOR TO VERIFY EXISTING LINE LOCATION AND DEPTH PRIOR TO TRENCING IN THIS AREA. | |
| STORM DRAIN CONSTRUCTION NOTES | | |
| 11 | INSTALL CONCRETE SLOPPER AND SPILLWAY PER MAG STD DTL 206-1, 206-2 & 206-3 AND HANDRAIL PER MAG STD DTL 145. | 1 EA |
| GRADING CONSTRUCTION NOTES | | |
| 15 | RP-RAP, 150#-4", 12" THICK, WITH NON-NDM, 10% DEGRITABLE POLYMERAL, PER MAG SPEC. SECT. 220.5. | 13 SY |

<p>Call at these times but working days</p> <p>ARIZONA Accident Re-Entry</p> <p>One 8-1-1 or 1-800-474-2747 (Toll-free) in Maricopa County (602) 350-1100</p>	
<p align="center">TOLLESON HIGH SCHOOL #7</p> <p align="center">NWC AVONDALE BLVD & ENCANTO BLVD AVONDALE, ARIZONA</p>	
<p align="center">OFFSITE PAVING PLAN</p>	
<p>PROJ. NO. 1959</p> <p>DATE: AUGUST 2018</p> <p>SCALE: 1"=20'</p>	<p align="center">HILGARTWILSON</p>
<p>DESIGNED: JW</p> <p>REV.</p>	<p>DRAWN: CM</p> <p>APPROVED: CW</p> <p align="right">DWG. NO. PV13 SHT. 13 OF 16</p>