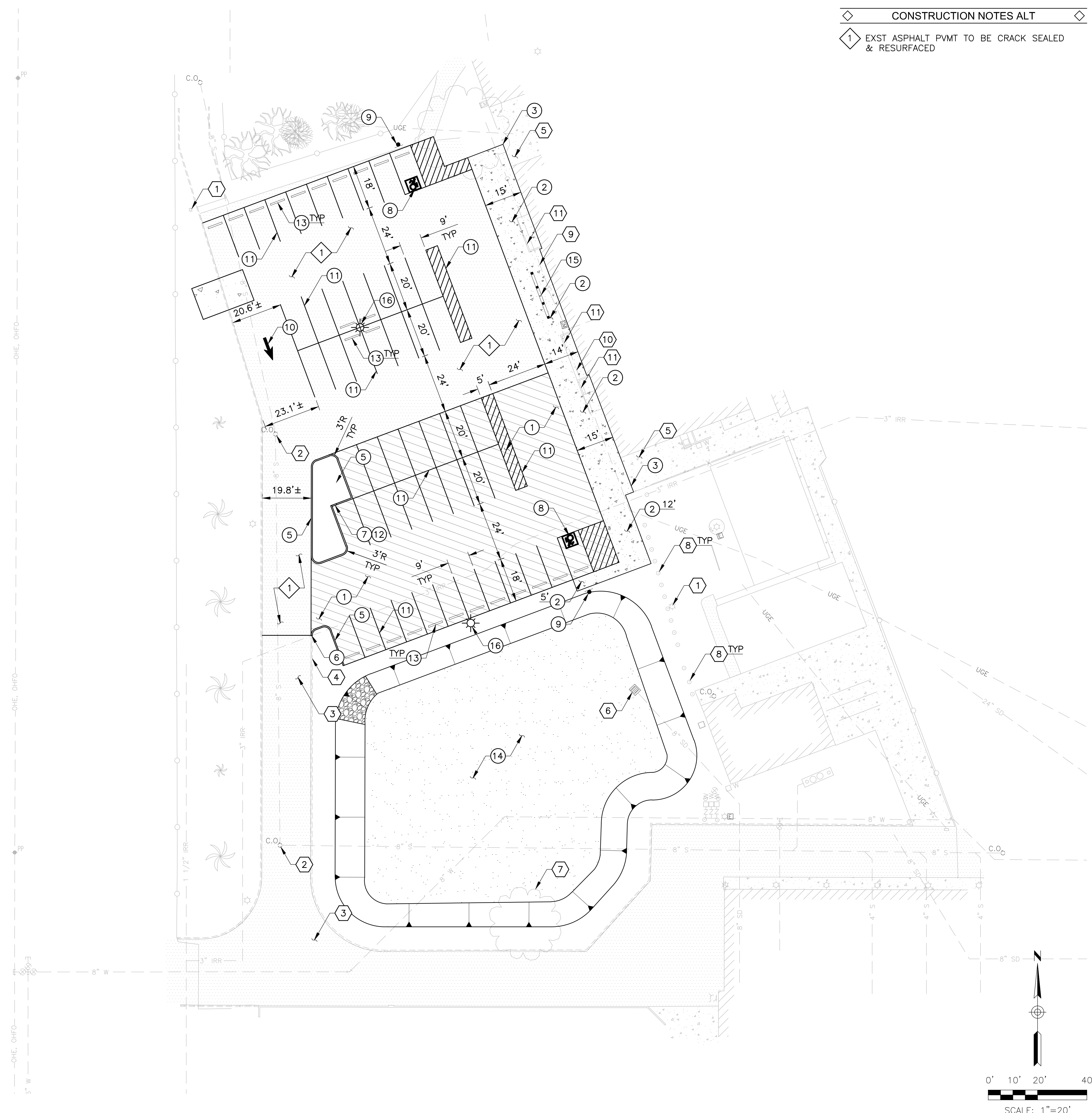


FILE: \\A\2018\1018110.10_Pueblo_HS\CAD\18110_10-SITE.dwg DATE: 7/11/2019 TIME: 6:05 PM (by: cresp, vepo)



CONSTRUCTION NOTES ALT

- 1 EXST ASPHALT PVMT TO BE CRACK SEALED & RESURFACED

CONSTRUCTION NOTES

- 1 ASPHALT PVMT, 2" AC OVER 4" ABC AC PER PAG SPEC SECT #406, MIX #2 ABC PER PAG SPEC SECT #303
- 2 CONC SWLK, WIDTH PER PLAN PAG STD DET 200
- 3 CONC SWLK, NEW TO EXST CONNECTION PAG STD DET 203
- 5 CONC VERT CURB, TYPE 2 PAG STD DET 209
- 6 CONC CURB, NEW TO EXST CONNECTION PAG STD DET 211
- 7 CONC HEADER PAG STD DET 213
- 8 ADA PARKING STALL, SYMBOL & STRIPING PER ADA GUIDELINES, LATEST EDITION
- 9 ADA PARKING SIGN PER ADA GUIDELINES, LATEST EDITION
- 10 PVMT MARKING, WHITE ARROW PER PCDOT & TDOT TRAFFIC ENGINEERING DIVISION PAVEMENT MARKING DESIGN MANUAL
- 11 PVMT MARKING, 4" WHITE STRIPE
- 12 PROVIDE 2' WIDE OPENING IN CURB TO ALLOW FOR SURFACE DRAINAGE
- 13 6' LONG CONC WHEEL STOP LOCATION PER PLAN
- 14 DETENTION BASIN 4:1 (H:V) SIDE SLOPES 6" THICK PEA GRAVEL ON BOTTOM
- 15 10'X20' STADIUM SIGN COORDINATE LOCATION WITH OWNER
- 16 RELOCATED LIGHT POLE COORDINATE LOCATION WITH OWNER

REFERENCE NOTES

- 1 EXST LIGHT POLE PROTECT IN PLACE
- 2 EXST SANITARY SEWER CLEAN OUT PROTECT IN PLACE
- 3 EXST ASPHALT PVMT PROTECT IN PLACE
- 4 EXST CONC CURB PROTECT IN PLACE
- 5 EXST CONC SIDEWALK PROTECT IN PLACE
- 6 EXST DRAINAGE INLET PROTECT IN PLACE
- 7 EXST TREE PROTECT IN PLACE
- 8 EXST BOLLARD PROTECT IN PLACE
- 9 EXST GAS LINE PROTECT IN PLACE
- 10 EXST UNDERGROUND ELEC PROTECT IN PLACE
- 11 EXST BLOCK WALL PROTECT IN PLACE

GENERAL NOTES

- 1. CONTRACTOR SHALL NOT EXCEED ADA SLOPES (2% CROSS SLOPE, 5% LONGITUDINAL SLOPE) IN ALL SIDEWALK AREAS.
- 2. ALL TOP OF CURB ELEVATIONS ARE EQUAL TO PAVEMENT GRADES PLUS 6", UNLESS NOTED OTHERWISE.
- 3. ALL ELEVATIONS ARE TO FINISH GRADE OF MATERIALS (ASPHALT, CONCRETE, RIPRAP, DG, ETC.) CONTRACTOR SHALL OVER EXCAVATE AS REQUIRED TO MEET ELEVATIONS PER PLAN.
- 4. ALL VALVE BOXES, ELECTRICAL BOXES, MANHOLES, CLEANOUTS, VAULTS AND OTHER UTILITY SURFACE FEATURES SHALL BE ADJUSTED TO FINISH GRADE.
- 5. CONTRACTOR SHALL MATCH EXISTING ELEVATIONS AT ALL SAWCUT LINES AND AT ALL SIDEWALK, CURB, AND CURB & GUTTER TIE-IN LOCATIONS.
- 6. CONTRACTOR SHALL VERIFY ALL EXISTING UTILITY LOCATIONS PRIOR TO CONSTRUCTION.

TUSD
Tucson Unified School District
Building for Children

SITE ADDRESS:
PUEBLO HIGH SCHOOL
3500 S. 12TH AVE.
TUCSON, AZ 85713
P. 520.225.4302
www.tusd1.org/pueblo

OWNER:
TUCSON UNIFIED SCHOOL DISTRICT
1010 E. TENTH ST.
TUCSON, AZ 85719
P. 520.225.6000
www.tusd1.org

CIVIL ENGINEER:
DIBBLE ENGINEERING
177 N. CHURCH AVENUE
SUITE 711
TUCSON, AZ 85701
P. 520.495.4065
www.dibblecorp.com

DRAINAGE IMPROVEMENTS
TUCSON, AZ

PUEBLO HIGH SCHOOL

Issued for: _____ Rev. Date: _____

Dibble Engineering

Project No.: 1018110.10

Designed: GDV Date: 06/2019
Drawn: DGW Date: 06/2019
Checked: GDV Date: 06/2019

**PRELIMINARY
NOT FOR
CONSTRUCTION
OR RECORDING**

SITE PLAN

SHEET: C3.1

SCALE: 1"=20'

PAGE 3 OF XX

