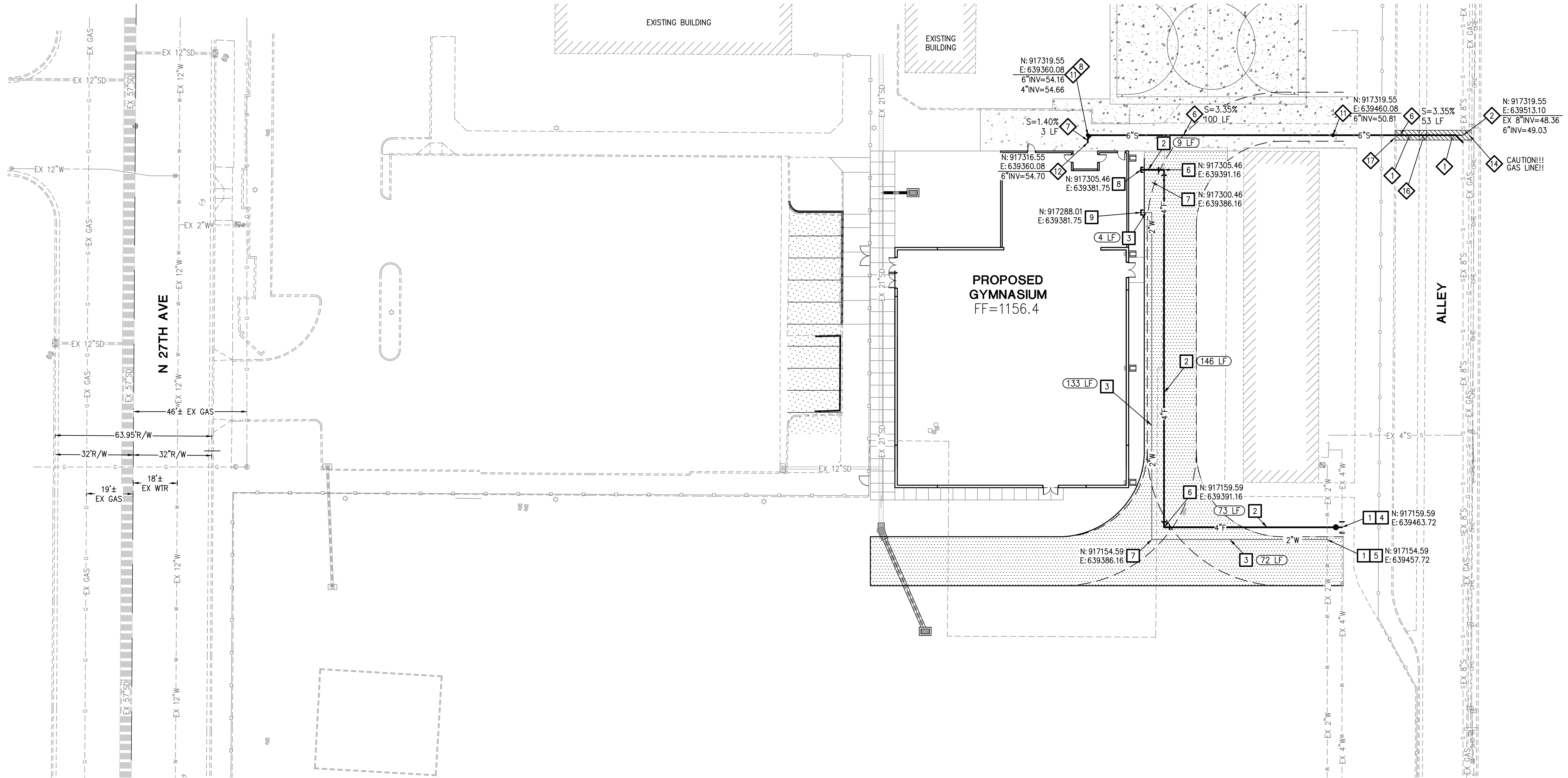


© Copyright, YYYY, HILGARTWILSON, LLC - This plan document set is the sole property of HILGARTWILSON, LLC. No alterations to these plans, other than adding "as-built" information, are allowed by anyone other than authorized HILGARTWILSON, LLC employees.



**WATER CONSTRUCTION NOTES**

- 1 CONNECT TO EXISTING WATERLINE. CONTRACTOR TO VERIFY LOCATION PRIOR TO CONSTRUCTION AND NOTIFY ENGINEER OF ANY DISCREPANCIES. 2 EA
- 2 INSTALL 4" PVC SCH 80 WATER LINE PER 2012 IPC. 228 LF
- 3 INSTALL 2" PVC SCH 80 WATER LINE PER 2012 IPC. 209 LF
- 4 INSTALL 4" X 4" CUT-IN TEE AND VALVE. 1 EA
- 5 INSTALL 2" X 2" TEE. 1 EA
- 6 INSTALL 4" X 90 BEND. 2 EA
- 7 INSTALL 2" X 90 BEND. 2 EA
- 8 INSTALL 4" WATER LINE CAP. SEE FIRE SPRINKLER PLANS FOR CONTINUATION. 1 EA
- 9 INSTALL 2" WATER LINE CAP. SEE PLUMBING PLANS FOR CONTINUATION. 1 EA

**SEWER CONSTRUCTION NOTES**

- 1 SAWCUT, REMOVE AND REPLACE EXISTING PAVEMENT PER MAG SPEC 336 AND C.O.P. DTL P-1200 TYPE B, OR REPLACE IN KIND, WHICHEVER IS GREATER. 12 SY
- 2 CONNECT TO EXISTING SEWER LINE PER MAG STD DTL 440-1. CONTRACTOR TO VERIFY INVERT AND LOCATION PRIOR TO CONSTRUCTION AND NOTIFY ENGINEER OF ANY DISCREPANCIES. 1 EA

- 6 INSTALL 6" PVC (SDR 35) SEWER PIPE PER 2012 IPC. (LENGTH AND SLOPE AS SHOWN). 153 LF
- 7 INSTALL 4" PVC (SDR 35) SEWER PIPE PER 2012 IPC. (LENGTH AND SLOPE AS SHOWN). 3 LF
- 8 INSTALL 6" X 4" BUILDING CONNECTION PER MAG STD DTL 440-1, TYPE A. 1 EA
- 11 INSTALL CLEANOUT PER 2012 IPC. 2 EA
- 12 INSTALL SEWER PLUG PER MAG STD DTL 427. SEE PLUMBING PLANS FOR CONTINUATION. 1 EA
- 14 CAUTION! EXISTING GAS LINE. CONTRACTOR TO VERIFY EXISTING PIPE LOCATION AND ELEVATION PRIOR TO TRENCHING IN THIS AREA. 1 EA
- 16 SAWCUT, REMOVE AND REPLACE EXISTING CONCRETE VALLEY GUTTER. 12 SF
- 17 SAWCUT, REMOVE AND REPLACE EXISTING CONCRETE CURB. 4 LF



**NEW ALHAMBRA TRADITIONAL SCHOOL - GYMNASIUM ADDITION**  
 5725 N 27TH AVE  
 PHOENIX, ARIZONA

**UTILITY PLAN**

PROJ. NO.	1999	
DATE:	OCTOBER 2018	
SCALE:	AS NOTED	DESIGNED: DZ
DESIGNED: DZ	DRAWN: SA	APPROVED: GK
REV.		DWG. NO.
		<b>C2.1</b>
		SHT. 2 OF 2

