



**Legal Description
RWCD Easement
GATEWAY POINTE**

Job No. 17-265

November 29, 2017

That certain parcel of land lying within the Southeast Quarter of Section 24, Township 1 South, Range 6 East of the Gila and Salt River Base and Meridian, Maricopa County, Arizona, and more particularly described as follows:

Commencing at the southeast corner of said Section 24, a brass cap in a handhole, from which the south quarter corner of said Section, a brass cap flush, bears South 89 degrees 22 minutes 42 seconds West, a distance of 2,618.01 feet;

thence South 89 degrees 22 minutes 42 seconds West, along the south line of said Southeast Quarter, 1258.31 feet;

thence North 0 degrees 54 minutes 56 seconds West, 73.00 feet to a point on the north line of RWCD Irrigation Easement described in Document Number 2009-0247083, records of Maricopa County, Arizona, said point being the POINT OF BEGINNING;

thence South 89 degrees 22 minutes 42 seconds West, along said north line, 37.62 feet;

thence North 45 degrees 26 minutes 10 seconds West, 7.05 feet;

thence South 89 degrees 22 minutes 42 seconds West, 1221.24 feet;

thence South 45 degrees 00 minutes 00 seconds West, 7.15 feet to a point on said north line;

thence South 89 degrees 22 minutes 42 seconds West, along said north line, 20.02 feet;

thence North 45 degrees 00 minutes 00 seconds East, 27.17 feet;

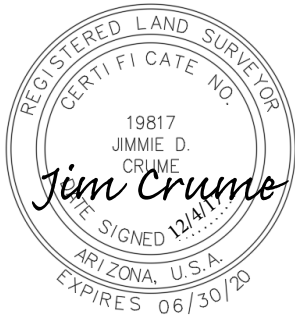
thence North 89 degrees 22 minutes 42 seconds East, 1232.77 feet;

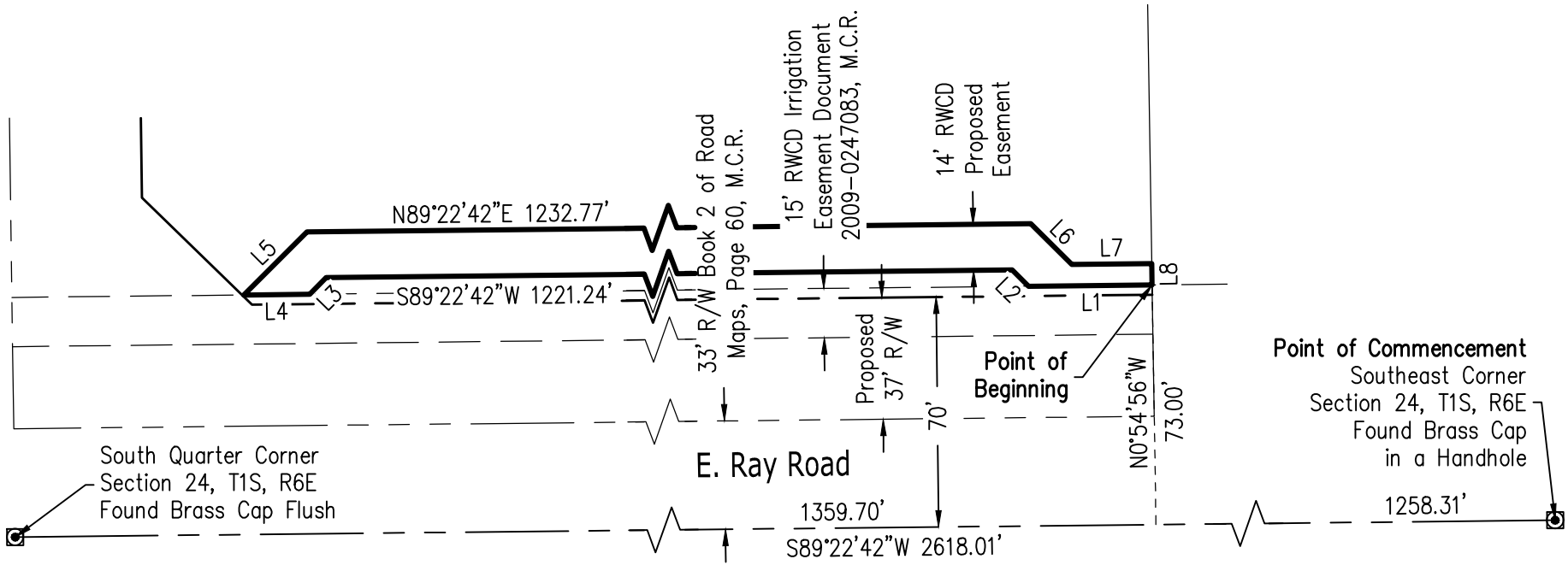
thence South 45 degrees 26 minutes 10 seconds East, 17.62 feet;

thence North 89 degrees 22 minutes 42 seconds East, 24.31 feet;



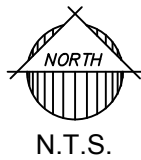
thence South 0 degrees 54 minutes 56 seconds East, 6.50 feet to the POINT OF BEGINNING.





LINE TABLE		
LINE	BEARING	LENGTH
L1	S89°22'42"W	37.62'
L2	N45°26'10"W	7.05'
L3	S45°00'00"W	7.15'
L4	S89°22'42"W	20.02'

LINE TABLE		
LINE	BEARING	LENGTH
L5	N45°00'00"E	27.17'
L6	S45°26'10"E	17.62'
L7	N89°22'42"E	24.31'
L8	S00°54'56"E	6.50'



17-265	EXHIBIT
	RWCD Easement Gateway Pointe

