

ENGINEERS GENERAL CONSTRUCTION NOTES:

1.

THESE PLANS ARE SUBJECT TO THE INTERPRETATION OF INTENT BY THE ENGINEER. ALL QUESTIONS REGARDING THESE PLANS SHALL BE PRESENTED TO THE ENGINEER. ANYONE WHO TAKES UPON HIMSELF THE INTERPRETATION OF THE DRAWINGS OR MAKES REVISIONS TO THEM WITHOUT CONFERRING WITH THE DESIGN ENGINEER SHALL BE RESPONSIBLE FOR THE CONSEQUENCES THEREOF.
2.

THE PLANS PREPARED FOR THIS PROJECT PRESENT A DESCRIPTION OF THE WORK TO BE ACCOMPLISHED. THE CONTRACTOR SHALL VISIT THE PROJECT SITE AND DETERMINE, FROM HIS OWN INSPECTION, THE CONDITIONS UNDER WHICH IT IS TO BE PERFORMED. THE CONTRACTOR, BY MAKING HIS BID, REPRESENTS THAT HE HAS VISITED THE SITE AND FAMILIARIZED HIMSELF WITH LOCAL CONDITIONS, THE TYPE OF WORK TO BE PERFORMED, EVALUATED THE DIFFICULTY OF PERFORMING THE REQUIRED TASKS, AND THE LABOR, EQUIPMENT AND MATERIAL THAT ARE REQUIRED TO PROVIDE A COMPLETE PROJECT.
3.

THE CONTRACTOR SHALL VERIFY WITH THE DESIGN ENGINEER THAT HE HAS THE MOST CURRENT SET OF CONSTRUCTION PLANS PRIOR TO COMMENCEMENT OF CONSTRUCTION AND MUST KEEP THE APPROVED SET OF PLANS ON-SITE FROM START OF CONSTRUCTION TO PROJECT COMPLETION. ANY CONSTRUCTION OR INSTALLATION BASED ON OUT-OF-DATE PLANS SHALL BE SUBJECT TO REMOVAL AND REPLACEMENT AT THE CONTRACTOR'S EXPENSE.
4.

QUANTITIES LISTED ON THESE PLANS ARE ESTIMATES ONLY. THE CONTRACTOR SHALL VERIFY ALL QUANTITIES BEFORE SUBMITTING A BID FOR THIS WORK.
5.

UNLESS NOTED OTHERWISE, THIS PROJECT WAS DESIGNED IN AN EFFORT TO BALANCE THE EARTHWORK AS MUCH AS POSSIBLE. ANY EARTHWORK VOLUMES SHOWN ON THESE PLANS ARE FOR INFORMATION ONLY AND SHALL NOT BE USED FOR BIDDING PURPOSES. THE CONTRACTOR'S BID SHALL INCLUDE ALL COSTS ASSOCIATED WITH IMPORTING AND PLACING MATERIAL OR STOCKPILING, HAULING AND DISPOSING OF EXCESS MATERIAL IN ACCORDANCE WITH THEIR CALCULATIONS AND DETERMINATION.
6.

A THOROUGH ATTEMPT HAS BEEN MADE TO SHOW THE LOCATIONS OF ALL UNDERGROUND OBSTRUCTIONS AND UTILITY LINES IN THE WORK AREA; HOWEVER, THE CONTRACTOR SHALL BE RESPONSIBLE FOR ANY DAMAGE TO OBSTRUCTIONS AND UTILITY LINES ENCOUNTERED DURING CONSTRUCTION AND SHALL DETERMINE THE EXACT LOCATION OF SAID UTILITIES IN ADVANCE OF TRENCHING. THE ENGINEER WILL NOT GUARANTEE ANY ELEVATIONS OR LOCATIONS OF EXISTING UNDER-GROUND UTILITIES SHOWN ON THESE PLANS.
7.

THE CONTRACTOR SHALL CALL BLUE STAKE PRIOR TO CONSTRUCTION AND VERIFY THE PRESENCE OF UTILITIES AND SHALL PROTECT ANY OVERHEAD OR UNDERGROUND UTILITIES DURING CONSTRUCTION, WHETHER OR NOT SAID UTILITIES ARE SHOWN ON THESE PLANS. THE CONTRACTOR SHALL MAKE EXPLORATORY EXCAVATIONS TO LOCATE UNDERGROUND UTILITIES AND/OR STRUCTURES IF NECESSARY TO VERIFY UNDERGROUND UTILITIES. WHERE EXISTING UNDERGROUND UTILITIES ARE EXPOSED, CONTRACTOR SHALL NOTIFY THE APPROPRIATE UTILITY COMPANY FOR INSPECTION PRIOR TO BACKFILLING.
8.

THE CONTRACTOR SHALL VERIFY THE LOCATION AND ELEVATION OF ALL POINTS OF CONNECTION PRIOR TO DIGGING BEYOND THE POINT OF CONNECTION.
9.

CONSTRUCTION OF THE SEWER LINE SHALL COMMENCE AT THE FURTHEST DOWNSTREAM POINT OF CONNECTION AND SHALL PROGRESS UPSTREAM FROM THAT POINT.
10.

ALL HANDICAP ACCESS RAMPS, PARKING STALLS, AND DELINEATED WALKWAYS SHALL BE CONSTRUCTED AND MARKED IN ACCORDANCE WITH CURRENT FEDERAL AND/OR LOCAL A.D.A. STANDARDS AND REQUIREMENTS. THE CONTRACTOR SHALL COORDINATE WITH THE LOCAL AUTHORITIES PRIOR TO CONSTRUCTING AND/OR STRIPING TO CONFIRM CURRENT REQUIREMENTS.
11.

ALL SLOPES HIGHER THAN ONE (1) FOOT AND STEEPER THAN 20:1, UNLESS LINED WITH TURF, SHALL BE COMPACTED AND TESTED PER MAG SPECIFICATION 215. RE-COMPACTION IS RECOMMENDED PER MAG SPECIFICATION 215 AFTER INSTALLATION OF IRRIGATION LINES, AND STABILIZATION OF DECOMPOSED GRANITE IS ALSO RECOMMENDED.
12.

THE CONTRACTOR SHALL COMPLY WITH ALL PROVISIONS SPECIFIED IN THE GEOTECHNICAL INVESTIGATION. NO PONDING DEEPER THAN 0.05' IS PERMITTED WITHIN 10' OF ANY BUILDING.
13.

THE CLIENT AND CONTRACTOR ASSUME ALL RESPONSIBILITY AND COSTS INCURRED IF THEY ELECT TO LANDSCAPE RETENTION BASINS BEFORE THE REQUIRED RETENTION VOLUMES HAVE BEEN CERTIFIED BY THE ENGINEER.
14.

THE CONTRACTOR SHALL OBTAIN PERMISSION FROM THE OWNER'S ENGINEER-OF-RECORD PRIOR TO BACKFILLING ANY WET OR DRY UTILITY MAIN OR SERVICE LINES TO ENSURE ALL INSPECTIONS AND TESTING HAS BEEN COMPLETED. NO UTILITY LINES SHALL BE BACKFILLED UNTIL AS-BUILT HORIZONTAL AND VERTICAL LOCATIONS HAVE BEEN OBTAINED. ANY ADDITIONAL COST REQUIRED
15.

THE CONTRACTOR SHALL REGISTER ALL DRYWELLS WITH THE ARIZONA DEPARTMENT OF ENVIRONMENTAL QUALITY AT THE CONCLUSION OF INSTALLATION AND TESTING. DRYWELL REGISTRATION NUMBERS SHALL BE PROVIDED TO THE OWNEN AND ENGINEER OR RECORD.

STAKING NOTES

CALL THE BLUE STAKE CENTER (263-1100) 48 HOURS BEFORE DIGGING FOR LOCATION OF UNDERGROUND UTILITIES.

ALL OFFSET OR REFERENCE STAKES SET BY THE ENGINEER ARE TO BE MAINTAINED INTACT. NO CLAIMS FOR ADDITIONAL COMPENSATION FOR CORRECTIONS SHALL BE PRESENTED TO ANY PARTY UNLESS SUCH STAKES ARE PRESENT AND THEIR ORIGIN IS VERIFIED. IF STAKES ARE NOT MAINTAINED INTACT, ALL CORRECTIONS SHALL BE MADE BY THE CONTRACTOR AT HIS EXPENSE.

ONE SET OF STAKES WILL BE FURNISHED BY THE OWNER FOR THE WATER LINE, WATER SERVICES, FIRE HYDRANT LOCATIONS AND GRADE, SEWER LINES AND SERVICES, CONCRETE SUBGRADE AND A.B.C.. ALL ADDITIONAL STAKING TO BE CHARGED TO THE CONTRACTOR. 24 WORKING HOUR NOTICE IS REQUIRED FOR STAKING BY THE SUBDIVISION ENGINEER.

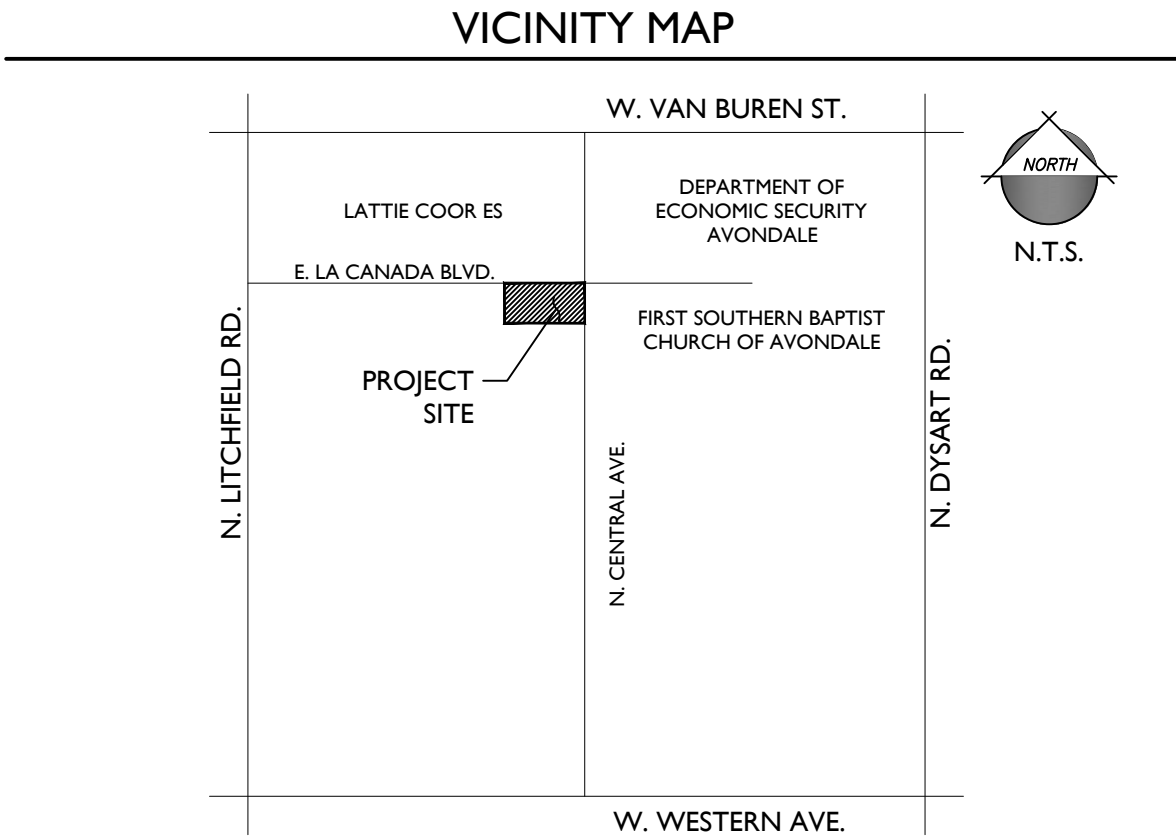
IMPROVEMENT PLANS
FOR
ELISEO C. FELIX SCHOOL

A PORTION OF SECTION 10, TOWNSHIP 1 NORTH, RANGE 1 WEST
OF THE GILA AND SALT RIVER MERIDIAN MARICOPA COUNTY, ARIZONA.

ESTIMATED QUANTITIES

QUANTITIES ARE FOR ESTIMATING PURPOSES ONLY.
ENGINEER MAKES NO GUARANTEE OF ACCURACY.

ITEM	QUANTITY
ON-SITE PAVING NOTES	
6 PAVEMENT: 3' AC/8"ABC	3783 SY
7 6" V.C.&G. MAG 220-1 TYPE A	1264 LF
8 SIDEWALK MAG 230; WIDTH PER PLAN	5933 SF
9 CONSTRUCT NEW CHAINLINK FENCE	617 LF
10 6" SINGLE CURB MAG 222 TYPE A	1099 LF
12 CURB TRANSITION - 6" SINGLE CURB TO 24" WIDE RIBBON CURB; MAG STD DTL 221	2 EA
13 CURB OPENING	1 EA
14 24" WIDE RIBBON CURB	58 LF
ONSITE IRRIGATION NOTES	
12C 12" PVC (SDR-35) IRRIGATION EQUALIZER PIPE	120 LF
16 IRRIGATION VALVE; MAG STD DTL 506	3 EA
17 BUBBLE UP PER DETAIL ON SHEET 1	6 EA
18 3' WIDE SCUPPER; MAG STD DTL 203	6 EA
REMOVAL NOTES	
2 REMOVE EXISTING CONCRETE	3379 SF
4A REMOVE EXIST CURB	59 LF
12 REMOVE EXISTING FENCE	545 LF
14 CONTRACTOR TO REMOVE & RELOCATE EXISTING PLAY AREA	NPI
14A	NPI
15 REMOVE EXISTING IRRIGATION VALVE & EXTEND WITH 12" PCS (SDR-25) IRRIGATION PIPE	75 LF
16 REMOVE EXISTING TREE	6 EA



PROJECT TEAM

OWNER/DEVELOPER

AVONDALE ELEMENTARY
SCHOOL DISTRICT #44
100 S. 3RD AVE.
AVONDALE, AZ 85323

CONSULTANT:

EPS GROUP, INC.
1130 N. ALMA SCHOOL RD. STE 120
MESA, AZ 85201
TEL: (480)-503-2250
CONTACT: DANIEL AUXIER
dan.auxier@EPSGROUPINC.COM

BASIS OF BEARING

SOUTH 00 DEGREES 07 MINUTES 10 SECONDS WEST. THE EAST LINE OF THE SOUTHEAST QUARTER OF THE NORTHWEST QUARTER OF SECTION 10, TOWNSHIP 1 NORTH, RANGE 1 WEST OF THE GILA AND SALT RIVER BASE AND MERIDIAN, MARICOPA COUNTY, ARIZONA

BENCHMARK

STATION G332
BRASS CAP IN HANDHOLE
PUBLISHED ELEVATION = 981.64' (CITY OF GOODYEAR)

FLOOD ZONE INFORMATION:

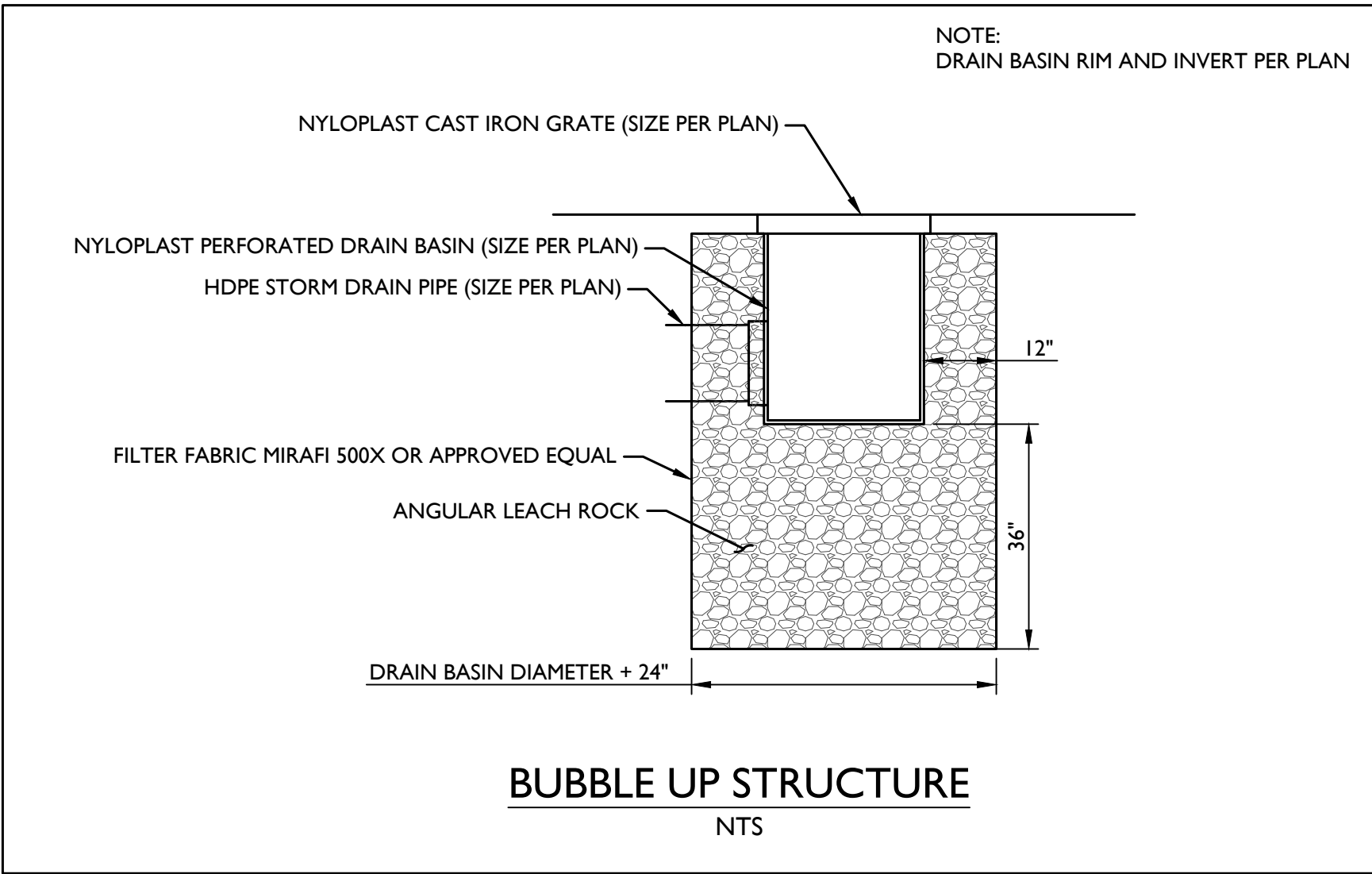
THIS PROJECT IS LOCATED WITHIN ZONE X OF THE F.E.M.A. FLOOD INSURANCE RATE MAP, #04013C2155L, DATED OCT 16, 2013.

ZONE X IS DEFINED AS: AREAS OF 0.2% ANNUAL CHANCE FLOOD; AREAS OF 1% ANNUAL CHANCE FLOOD WITH AVERAGE DEPTHS OF LESS THAN 1 FOOT OR WITH DRAINAGE AREAS LESS THAN 1 SQUARE MILE; AND AREAS PROTECTED BY LEVEES FROM 1% ANNUAL CHANCE FLOOD.

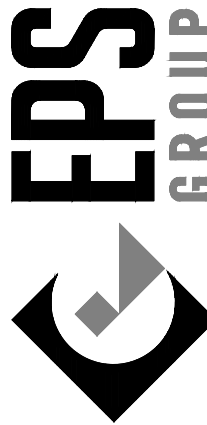
AS-BUILT CERTIFICATION:

I HEREBY CERTIFY THAT THE "RECORD DRAWING" MEASUREMENTS AS SHOWN HEREON WERE MADE UNDER MY SUPERVISION OR AS NOTED AND ARE CORRECT TO THE BEST OF MY KNOWLEDGE AND BELIEF.

REGISTERED ENGINEER/LAND SURVEYOR REGISTRATION NUMBER DATE



1130 N Alma School Road
Suite 120
Mesa, AZ 85201
T:480.503.2250 | F:480.503.2258
www.epsgroupinc.com



Project: Eliseo C. Felix School

540 La Prada, Goodyear, Arizona 85338
Cover Sheet

Revisions:

Call at least two full working days before you begin excavation.
ARIZONA
State Seal of the State of Arizona
In Maricopa County: (602)263-1100

Designer: DBA
Drawn by: DBA

Preliminary
Not For
Construction
Or
Recording

Job No.

18-034

C100

Sheet No.

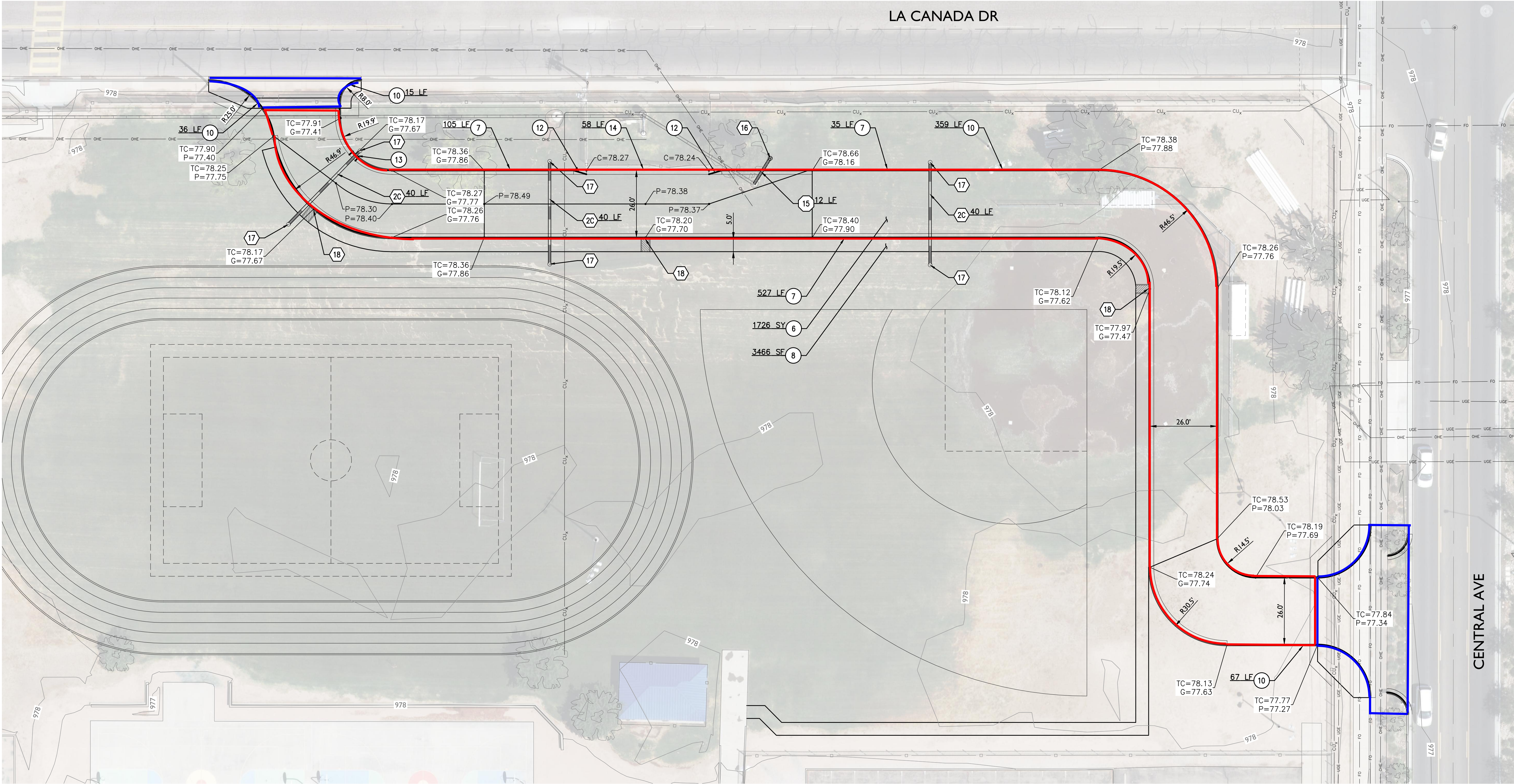
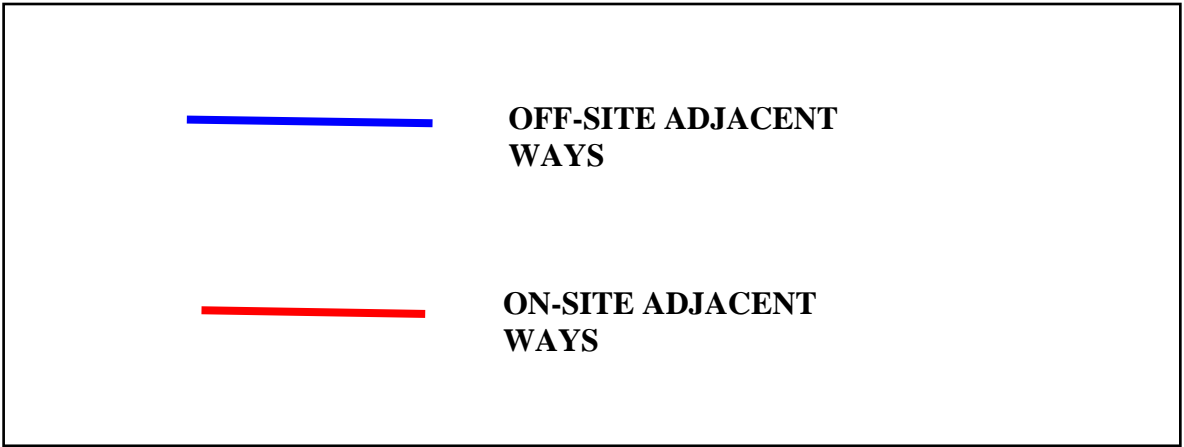
1
of 3

18-034 - Eliseo Felix School

Nov. 26, 2018 5:26pm S:\Projects\2018\18-034\Civil\Improvement Plans\Onsite Improvement Plans 18-034 - C501.dwg

tbills

ON-SITE PAVING NOTES		ONSITE IRRIGATION NOTES	
6	PAVEMENT: 3' AC/8"ABC	1726 SY	20 12" PVC (SDR-35) IRRIGATION EQUALIZER PIPE
7	6" V.C.&G. MAG 220-1 TYPE A	667 LF	16 IRRIGATION VALVE; MAG STD DTL 506
8	SIDEWALK MAG 230; WIDTH PER PLAN	3466 SF	17 BUBBLE UP PER DETAIL ON SHEET 1
10	6" SINGLE CURB MAG 222 TYPE A	477 LF	18 3' WIDE SCUPPER; MAG STD DTL 203
12	CURB TRANSITION - 6" SINGLE CURB TO 24" WIDE RIBBON	2 EA	REMOVAL NOTES
	CURB; MAG STD DTL 221		15 REMOVE EXISTING IRRIGATION VALVE & EXTEND WITH 12" PCS
13	CURB OPENING	1 EA	(SDR-25) IRRIGATION PIPE
14	24" WIDE RIBBON CURB	58 LF	12 LF



1130 N Alma School Road
Suite 120
Mesa, AZ 85201
T:480.503.2250 | F:480.503.2258
www.epsgroupinc.com

Project:
Eliseo C. Felix School
540 La Prada, Goodyear, Arizona 85338

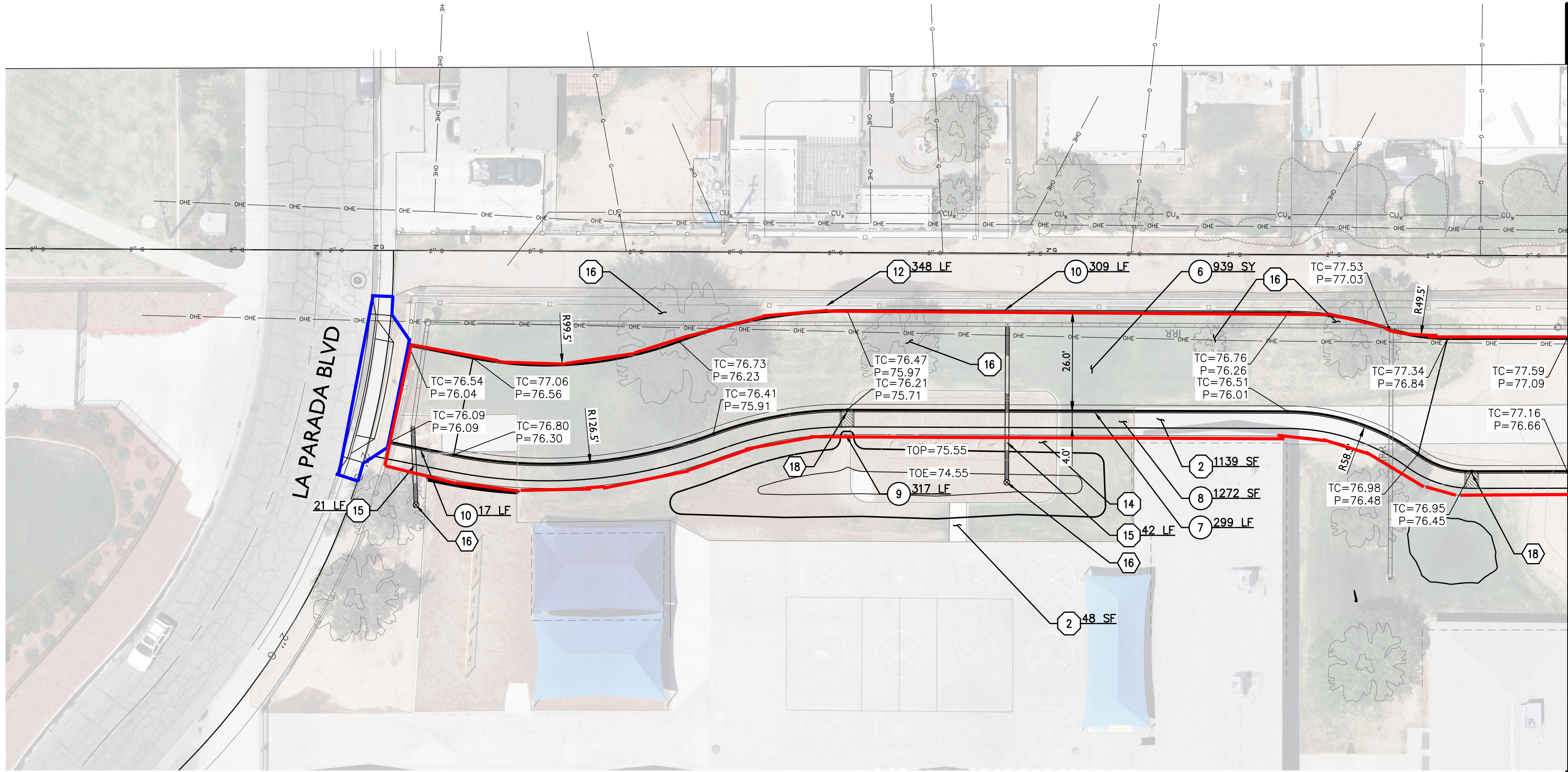
Revisions:

Call at least two full working days
before you begin excavation.
State Seal No. 1-800-375-ARIZONA (1-800-375-2746)
In Maricopa County: (602)263-1100

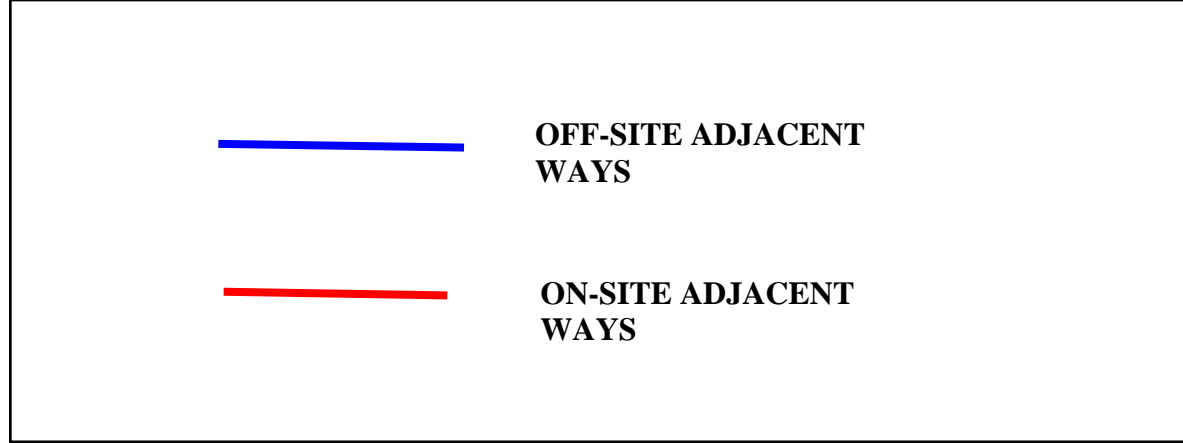
Designer: DBA
Drawn by: DBA

Preliminary
Not For
Construction
Or
Recording

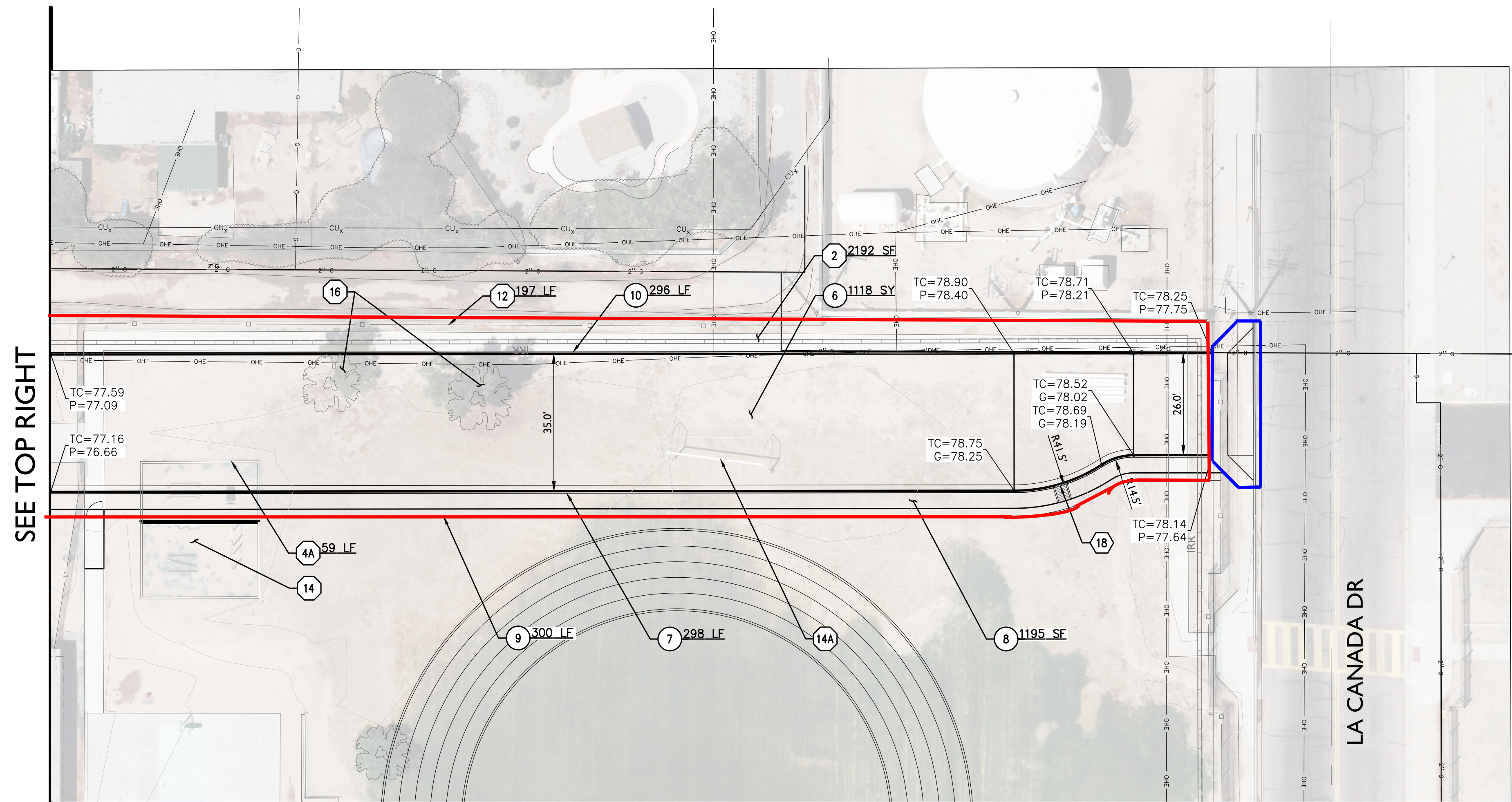
Job No.
18-034
C501
Sheet No.
2
of 3



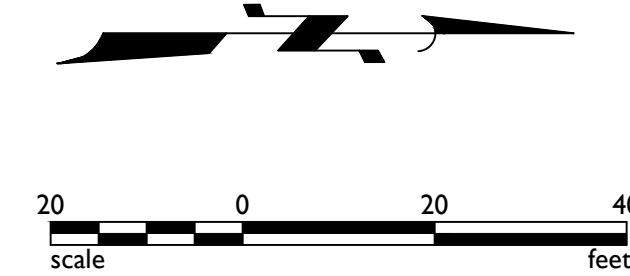
SEE BOTTOM LEFT



ON-SITE PAVING NOTES		
6	PAVEMENT: 3' AC/8"ABC	2057 SY
7	6" V.C.&G. MAG 220-1 TYPE A	597 LF
8	SIDEWALK MAG 230; WIDTH PER PLAN	2467 SF
9	CONSTRUCT NEW CHAINLINK FENCE	617 LF
10	6" SINGLE CURB MAG 222 TYPE A	622 LF
ONSITE IRRIGATION NOTES		
16	IRRIGATION VALVE; MAG STD DTL 506	2 EA
18	3' WIDE SCUPPER; MAG STD DTL 203	3 EA
REMOVAL NOTES		
2	REMOVE EXISTING CONCRETE	3379 SF
4A	REMOVE EXIST CURB	59 LF
12	REMOVE EXISTING FENCE	545 LF
14	CONTRACTOR TO REMOVE & RELOCATE EXISTING PLAY AREA	NPI
14A		NPI
15	REMOVE EXISTING IRRIGATION VALVE & EXTEND WITH 12" PCS (SDR-25) IRRIGATION PIPE	63 LF
16	REMOVE EXISTING TREE	6 EA



SEE TOP RIGHT



Project:

Eliseo C. Felix School
540 La Parada, Goodyear, Arizona 85338

Revisions:

Call at least two full working days before you begin excavation.

ARIZONA 811

One Call 811 or 1-800-875-8282 or 1-800-875-8282
In Maricopa County: (602)263-1100

Designer: DBA

Drawn by: DBA

Preliminary

Not For Construction

Or Recording

Job No.

18-034

C502

Sheet No.

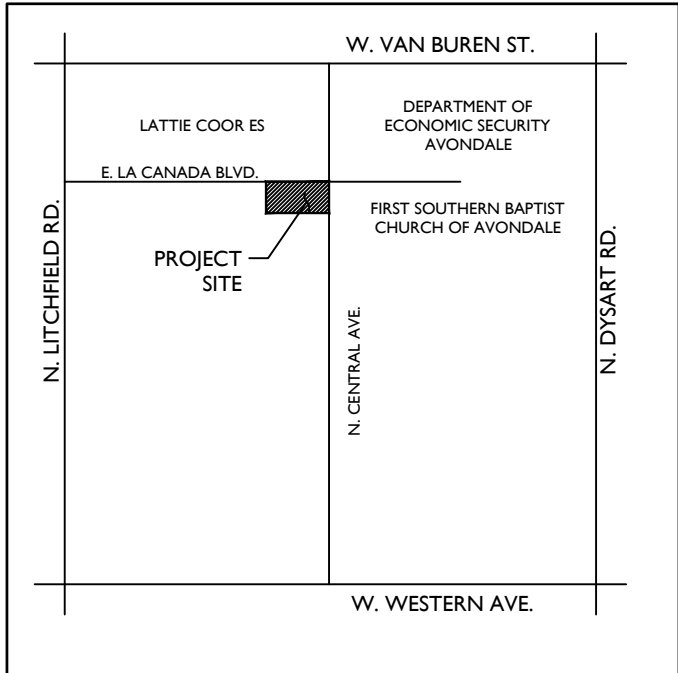
3

of 3

1130 N Alma School Road
Suite 120
Mesa, AZ 85201
T:480.503.2250 | F:480.503.2258
www.epsgroupinc.com

EPS GROUP

Nov 26, 2018 5:03pm S:\Projects\2018\18-034\Civil\Improvement Plans\Avondale Plans\18-034 - C100.dwg
tbills



SHEET INDEX:

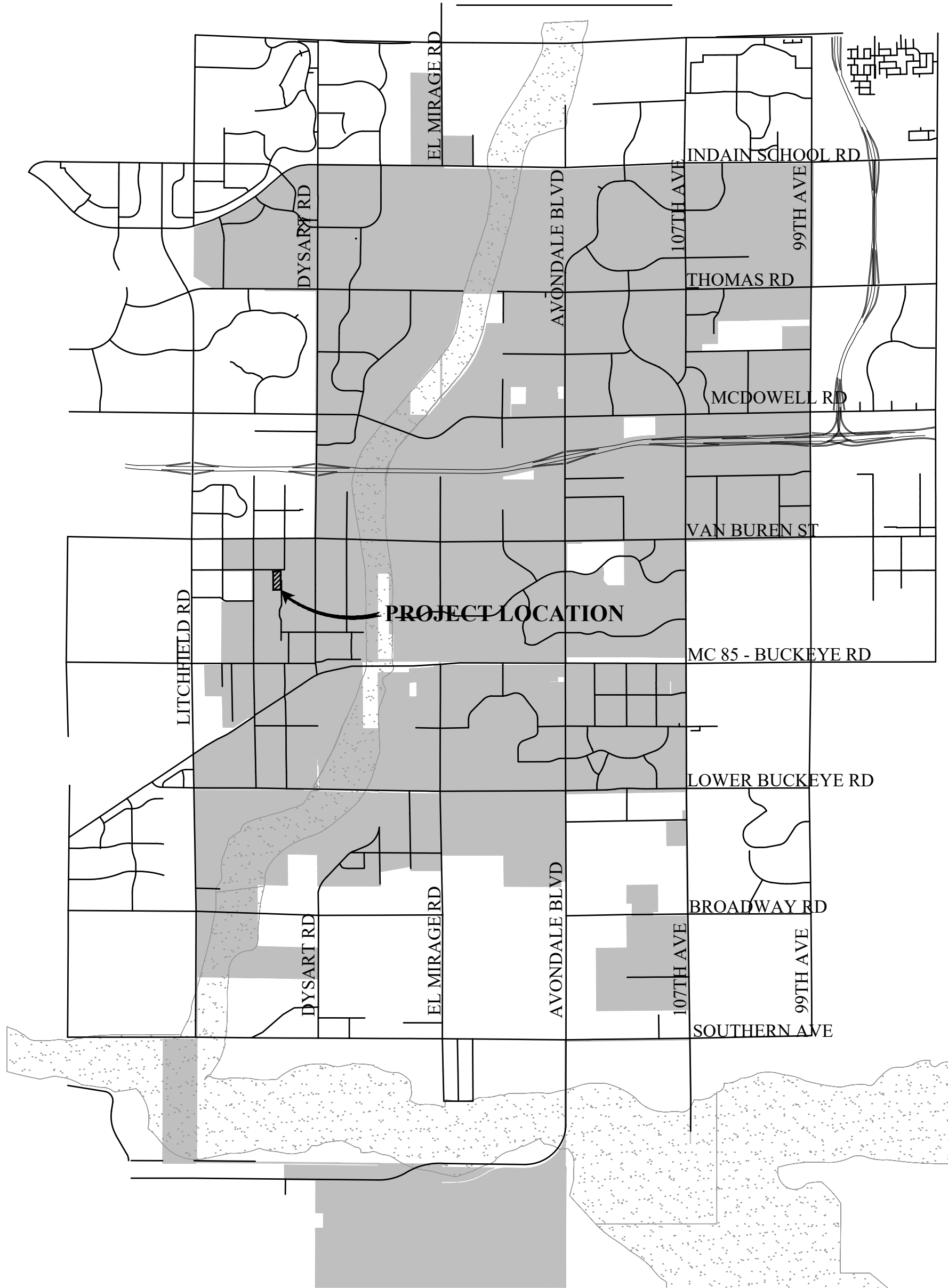
COVER SHEET
PAVING PLAN

SHEET 1
SHEET 2

ELISEO C. FELIX SCHOOL IMPROVEMENT PLANS AVONDALE, ARIZONA

Section 10, Township 1 NORTH & Range 1 WEST

AREA MAP



OWNER

AVONDALE ELEMENTARY
SCHOOL DISTRICT #44
100 S. 3RD AVE.
AVONDALE, AZ 85323

ENGINEER

EPS GROUP, INC.
DANIEL "OX" AUXIER
1130 N. ALMA SCHOOL RD. STE 120
MESA, AZ 85201
PHONE: (480)503-2250

BENCHMARK:

STATION G332
BRASS CAP IN HANDHOLE
PUBLISHED ELEVATION = 981.64'
(CITY OF GOODYEAR)

CITY OF AVONDALE

MAYOR

KENNETH WEISE

VICE MAYOR

BRIAN KILGORE

CITY MANGER

CYNTHIA SEELHAMMER (INTERIM)

COUNCIL MEMBERS

PAT DENNIS TINA CONDE
VERONICA MALONE LORENZO SIERRA
MIKE PINEDA

CITY CLERK

CARMEN MARTINEZ

APPROVALS

CITY ENGINEERING DEPARTMENT _____ DATE _____

THE CITY APPROVES THESE PLANS FOR CONCEPT ONLY
AND ACCEPTS NO LIABILITY FOR ERRORS OR OMISSIONS

(water & sewer plans)
MARICOPA COUNTY ENVIRONMENTAL SERVICES _____ DATE _____
1101 N CENTRAL #150
PHOENIX, AZ 85334
TOM CHISOLM (602) 506-6671

(water plans)
CITY OF AVONDALE FIRE DEPARTMENT _____ DATE _____
REQUIRED FIRE FLOW _____ GPM

"AS-BUILT CERTIFICATION"

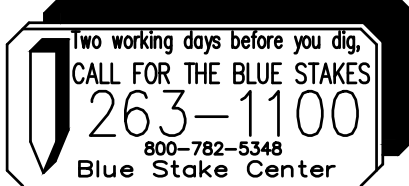
I HEREBY CERTIFY THAT THE "AS-BUILT" INFORMATION
SHOWN HEREON WAS OBTAINED UNDER MY DIRECT
SUPERVISION AND IS CORRECT AND COMPLETE TO THE
BEST OF MY KNOWLEDGE AND BELIEF.

REGISTERED LAND SURVEYOR _____ SEAL _____

REGISTRATION NUMBER _____ DATE _____
COMPANY NAME:
ADDRESS:
CITY/STATE/ZIP CODE:
PHONE NUMBER:

NOTE:

ALL CONSTRUCTION SHALL BE IN ACCORDANCE
WITH THE MOST RECENT EDITION OF THE CITY
OF AVONDALE'S SUPPLEMENT TO THE M.A.G.
SPECIFICATIONS AND STANDARD DETAILS
CURRENTLY ON FILE AND AVAILABLE AT THE
CITY OF AVONDALE'S ENGINEERING DEPARTMENT
OR ONLINE AT THE CITY OF AVONDALE'S WEBSITE.



Utility Conflict Notification Block

THESE PLANS HAVE BEEN SUBMITTED TO THE FOLLOWING UTILITY COMPANIES.
WHERE THE WORK TO BE DONE CONFLICTS WITH ANY OF THESE UTILITIES, THE
CONFLICTS SHALL BE RESOLVED AS SPECIFIED IN THE SPECIAL NOTES AND/OR
AS OTHERWISE NOTED ON THESE PLANS. CONFLICTS ARISING DURING THE
COURSE OF CONSTRUCTION FROM UNFORESEEN CIRCUMSTANCES SHALL BE
REPORTED TO THE INTERESTED UTILITY COMPANY AND BE RESOLVED BY THEM
AND THE DESIGN ENGINEER.

SALT RIVER POWER DISTRICT	_____ COMPANY REPRESENTATIVE	_____ DATE
ARIZONA PUBLIC SERVICE	_____ COMPANY REPRESENTATIVE	_____ DATE
QWEST	_____ COMPANY REPRESENTATIVE	_____ DATE
COX COMMUNICATIONS	_____ COMPANY REPRESENTATIVE	_____ DATE
SOUTHWEST GAS	_____ COMPANY REPRESENTATIVE	_____ DATE
SALT RIVER IRRIGATION DISTRICT	_____ COMPANY REPRESENTATIVE	_____ DATE
ROOSEVELT IRRIGATION DISTRICT	_____ COMPANY REPRESENTATIVE	_____ DATE
EL PASO NATURAL GAS	_____ COMPANY REPRESENTATIVE	_____ DATE

QUANTITIES				
GRADING & DRAINAGE	ON-SITE	UNIT	OFF-SITE	UNIT
GRADING	0	SY	292	SY
STORM SEWER PIPE	0	LF	0	LF
STORM SEWER MANHOLE	0	EA	0	EA
UNDERGROUND RETENTION PIPE	0	LF	N/A	LF
DRYWELL	0	EA	N/A	EA
SPILLWAY	0	EA	0	EA
RIP RAP	0	CY	N/A	CY
CURB OPENING	0	LF	0	LF
BOX CULVERT	0	EA	0	EA
CATCH BASIN/HEADWALL	0	EA	0	EA
SCUPPER	0	EA	0	EA
IRRIGATION				
IRRIGATION PIPE	0	LF	0	LF
IRRIGATION MANHOLE/STRUCTURE	0	EA	0	EA
SANITARY SEWER				
MAIN LINE PIPE	0	LF	0	LF
SERVICE LINE PIPE	0	LF	0	LF
MANHOLE	0	EA	0	EA
DROP CONNECTION	0	EA	0	EA
UTILITY ADJUSTMENT	0	EA	N/A	EA
CLEANOUTS	0	EA	0	EA
PIPE CONNECTION	0	EA	0	EA
PIPE ENCASEMENT	0	LF	0	LF
SEWER SERVICE TAP	0	EA	0	EA
WATER				
MAIN LINE	0	LF	0	LF
WATER SERVICE LINE	0	LF	0	LF
TAPPING SLEEVE	0	EA	0	EA
MAIN LINE/LATERAL/FH VALVE	0	EA	0	EA
WATER VALVE/MANHOLE/ARV VAULT	0	EA	0	EA
FIRE LINE	0	LF	0	LF
BLOW OFF/TAPPED CAP	0	EA	0	EA
METER BOX	N/A	EA	0	EA
BACKFLOW (UP TO 3")	0	EA	N/A	EA
BACKFLOW 3" AND LARGER	0	EA	N/A	EA
WATER LINE CONNECTION	0	EA	0	EA
UTILITY ADJUSTMENT	0	EA	0	EA
FIRE HYDRANTS	0	EA	0	EA
DRY UTILITIES				
OPEN TRENCH IN PAVED R/W	N/A	LF	0	LF
OPEN TRENCH IN UNPAVED R/W	N/A	LF	0	LF
BORE ONLY	N/A	LF	0	LF
BORE/SPLICE PIT	N/A	EA	0	EA
POTHOLE	N/A	EA	0	EA
FLAT CONCRETE				
SIDEWALK	0	SF	0	SF
CURB AND GUTTER/SINGLE CURB/RIBBON	0	LF	24	LF
VALLEY CUTTER AND APRON	0	SF	0	SF
BUS BAY, RT. TURN LANE	N/A	SF	0	SF
RETURN TYPE DRIVEWAY	N/A	SF	0	SF
DRIVEWAY (NON-RETURN TYPE)	N/A	EA	0	EA
SIDEWALK RAMP	0	EA	0	EA
PAVING				
NEW CONC/ASPHALT PAVING	0	SY	155	SY
ASPHALT/CONC OVERLAY	N/A	SY	0	SY
SLURRY SEAL/MICRO SEAL	N/A	SY	0	SY
UTILITY ADJUSTMENT (IN R/W STREET)	N/A	EA	0	EA
SURVEY MONUMENT	N/A	EA	0	EA
STREET SIGN	N/A	EA	0	EA
BARRICADE/GUARDRAIL	N/A	LF	0	LF
STRIPING (4" EQUIV.)	N/A	LF	0	LF
ASPHALT/CONC REPLACEMENT	N/A	SY	0	SY
STREET LIGHTS	N/A	EA	0	EA
TRAFFIC SIGNAL	N/A	EA	0	EA
SIGNING AND STRIPING				
STRIPING (8" EQUIV.)	N/A	LF	0	LF
STRIPING (12" EQUIV.)	N/A	LF	0	LF

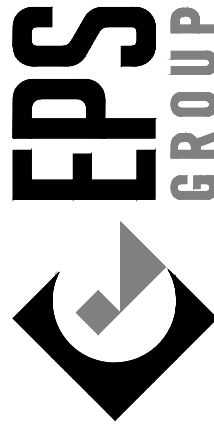
Storm Water Certification

- ALL DRAINAGE DESIGN WILL COMPLY WITH THE DRAINAGE DESIGN MANUAL FOR MARICOPA COUNTY, ARIZONA, VOLUMES I & II, JANUARY 28 1996, AS AMENDED OR UPDATED.
- THE DEVELOPMENT WILL PROVIDE ADEQUATE RETENTION FOR THE 100-YEAR 2-HOUR STORM. THIS INCLUDES ONSITE AND ADJACENT HALF STREET RUNOFF.
- IN ALL CASES THE HALF STREET FLOW FROM THE 100-YEAR, 2-HOUR STORM WILL BE CONTAINED WITHIN THE PUBLIC RIGHT OF WAY.
- THE COLLECTION SYSTEM FOR THE 10-YEAR 2-HOUR STORM HAS BEEN DESIGNED SO THAT ALL ARTERIAL AND MAJOR COLLECTOR STREETS SHALL MAINTAIN ONE DRY LANE IN EACH DIRECTION.
- FINISHED FLOOR ELEVATIONS MUST BE MINIMUM OF 14-INCHES ABOVE THE OUT FALL TOP OF CURB ELEVATION, OR 12-INCHES ABOVE THE COMPUTED 100-YEAR 2-HOUR WATER SURFACE ELEVATION WHICH EVER IS GREATER.
- ALL STORM WATER RETENTION SHALL BE DRAINED WITHIN 36 HOURS. IF BASINS DO NOT DRAIN WITHIN 36 HOURS, DEVELOPER/OWNER SHALL ENACT MEASURE TO CORRECT.

SIGNATURE

DATE

1130 N. Alma School Rd. Ste 120
Mesa, AZ 85201
T:480.503.2250 | F:480.503.2258
www.epsgroupinc.com



DELIVERED TO: AVONDALE ELEMENTARY SCHOOL DISTRICT #44

PROJECT NAME: ELISEO C. FELIX SCHOOL

PLAN TYPE: ONSITE IMPROVEMENT PLANS

SEALED

Preliminary
Not For
Construction
Or
Recording

ORIGINAL PLAN DATE

XX/XX/XX

LATEST REVISION DATE

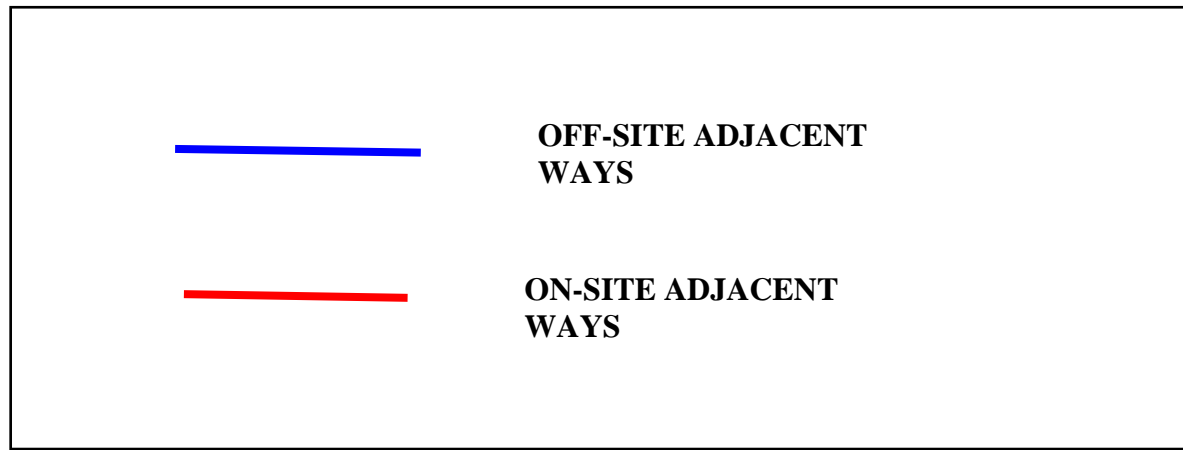
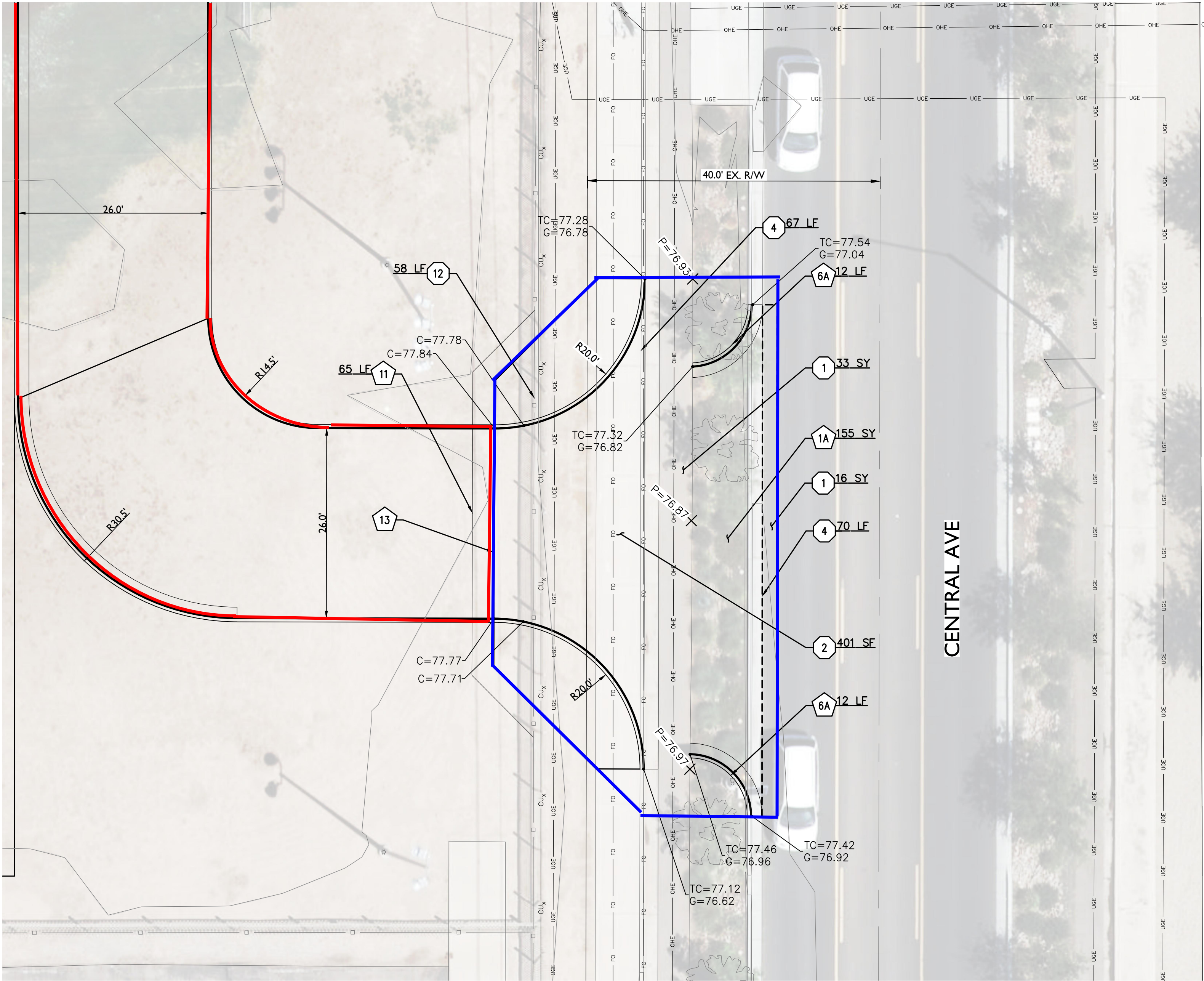
XX/XX/XX

SHEET NUMBER

1 OF 2

PROJECT NUMBER

18-034



OFFSITE PAVEMENT NOTES

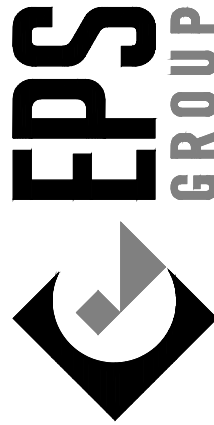
1A	PAVEMENT: 3" AC/8" ABC	155 SY
6A	6" V.C.&G. MAG 220-1 TYPE A	24 LF
11	CONSTRUCT NEW FENCE	65 LF
13	DRIVEWAY: CITY OF AVONDALE DETAIL A1254	1 EA

REMOVAL NOTES

1	SAWCUT, REMOVE, AND & REPLACE EXISTING PAVEMENT; 2' MIN	49 SY
2	REMOVE EXISTING CONCRETE	401 SF
4	REMOVE EXIST CURB AND GUTTER	137 LF
12	REMOVE EXISTING FENCE	58 LF



1130 N. Alma School Rd. Ste 120
Mesa, AZ 85201
T:480.503.2250 | F:480.503.2258
www.epsgroupinc.com



AVONDALE ELEMENTARY SCHOOL DISTRICT #44

ELISEO C. FELIX SCHOOL

ONSITE IMPROVEMENT PLANS

DATE PREPARED

PROJECT NAME

PLANTING

SEALED

Preliminary
Not For
Construction
Or
Recording

ORIGINAL PLAN DATE

XX/XX/XX

LATEST REVISION DATE

XX/XX/XX

SHEET NUMBER

2 OF 2

PROJECT NUMBER

18-034

ENGINEERS GENERAL CONSTRUCTION NOTES:

1.

THESE PLANS ARE SUBJECT TO THE INTERPRETATION OF INTENT BY THE ENGINEER. ALL QUESTIONS REGARDING THESE PLANS SHALL BE PRESENTED TO THE ENGINEER. ANYONE WHO TAKES UPON HIMSELF THE INTERPRETATION OF THE DRAWINGS OR MAKES REVISIONS TO THEM WITHOUT CONFERRING WITH THE DESIGN ENGINEER SHALL BE RESPONSIBLE FOR THE CONSEQUENCES THEREOF.
2.

THE PLANS PREPARED FOR THIS PROJECT PRESENT A DESCRIPTION OF THE WORK TO BE ACCOMPLISHED. THE CONTRACTOR SHALL VISIT THE PROJECT SITE AND DETERMINE, FROM HIS OWN INSPECTION, THE CONDITIONS UNDER WHICH IT IS TO BE PERFORMED. THE CONTRACTOR, BY MAKING HIS BID, REPRESENTS THAT HE HAS VISITED THE SITE AND FAMILIARIZED HIMSELF WITH LOCAL CONDITIONS, THE TYPE OF WORK TO BE PERFORMED, EVALUATED THE DIFFICULTY OF PERFORMING THE REQUIRED TASKS, AND THE LABOR, EQUIPMENT AND MATERIAL THAT ARE REQUIRED TO PROVIDE A COMPLETE PROJECT.
3.

THE CONTRACTOR SHALL VERIFY WITH THE DESIGN ENGINEER THAT HE HAS THE MOST CURRENT SET OF CONSTRUCTION PLANS PRIOR TO COMMENCEMENT OF CONSTRUCTION AND MUST KEEP THE APPROVED SET OF PLANS ON-SITE FROM START OF CONSTRUCTION TO PROJECT COMPLETION. ANY CONSTRUCTION OR INSTALLATION BASED ON OUT-OF-DATE PLANS SHALL BE SUBJECT TO REMOVAL AND REPLACEMENT AT THE CONTRACTOR'S EXPENSE.
4.

QUANTITIES LISTED ON THESE PLANS ARE ESTIMATES ONLY. THE CONTRACTOR SHALL VERIFY ALL QUANTITIES BEFORE SUBMITTING A BID FOR THIS WORK.
5.

UNLESS NOTED OTHERWISE, THIS PROJECT WAS DESIGNED IN AN EFFORT TO BALANCE THE EARTHWORK AS MUCH AS POSSIBLE. ANY EARTHWORK VOLUMES SHOWN ON THESE PLANS ARE FOR INFORMATION ONLY AND SHALL NOT BE USED FOR BIDDING PURPOSES. THE CONTRACTOR'S BID SHALL INCLUDE ALL COSTS ASSOCIATED WITH IMPORTING AND PLACING MATERIAL OR STOCKPILING, HAULING AND DISPOSING OF EXCESS MATERIAL IN ACCORDANCE WITH THEIR CALCULATIONS AND DETERMINATION.
6.

A THOROUGH ATTEMPT HAS BEEN MADE TO SHOW THE LOCATIONS OF ALL UNDERGROUND OBSTRUCTIONS AND UTILITY LINES IN THE WORK AREA; HOWEVER, THE CONTRACTOR SHALL BE RESPONSIBLE FOR ANY DAMAGE TO OBSTRUCTIONS AND UTILITY LINES ENCOUNTERED DURING CONSTRUCTION AND SHALL DETERMINE THE EXACT LOCATION OF SAID UTILITIES IN ADVANCE OF TRENCHING. THE ENGINEER WILL NOT GUARANTEE ANY ELEVATIONS OR LOCATIONS OF EXISTING UNDER-GROUND UTILITIES SHOWN ON THESE PLANS.
7.

THE CONTRACTOR SHALL CALL BLUE STAKE PRIOR TO CONSTRUCTION AND VERIFY THE PRESENCE OF UTILITIES AND SHALL PROTECT ANY OVERHEAD OR UNDERGROUND UTILITIES DURING CONSTRUCTION, WHETHER OR NOT SAID UTILITIES ARE SHOWN ON THESE PLANS. THE CONTRACTOR SHALL MAKE EXPLORATORY EXCAVATIONS TO LOCATE UNDERGROUND UTILITIES AND/OR STRUCTURES IF NECESSARY TO VERIFY UNDERGROUND UTILITIES. WHERE EXISTING UNDERGROUND UTILITIES ARE EXPOSED, CONTRACTOR SHALL NOTIFY THE APPROPRIATE UTILITY COMPANY FOR INSPECTION PRIOR TO BACKFILLING.
8.

THE CONTRACTOR SHALL VERIFY THE LOCATION AND ELEVATION OF ALL POINTS OF CONNECTION PRIOR TO DIGGING BEYOND THE POINT OF CONNECTION.
9.

CONSTRUCTION OF THE SEWER LINE SHALL COMMENCE AT THE FURTHEST DOWNSTREAM POINT OF CONNECTION AND SHALL PROGRESS UPSTREAM FROM THAT POINT.
10.

ALL HANDICAP ACCESS RAMPS, PARKING STALLS, AND DELINEATED WALKWAYS SHALL BE CONSTRUCTED AND MARKED IN ACCORDANCE WITH CURRENT FEDERAL AND/OR LOCAL A.D.A. STANDARDS AND REQUIREMENTS. THE CONTRACTOR SHALL COORDINATE WITH THE LOCAL AUTHORITIES PRIOR TO CONSTRUCTING AND/OR STRIPING TO CONFIRM CURRENT REQUIREMENTS.
11.

ALL SLOPES HIGHER THAN ONE (1) FOOT AND STEEPER THAN 20:1, UNLESS LINED WITH TURF, SHALL BE COMPACTED AND TESTED PER MAG SPECIFICATION 215. RE-COMPACTION IS RECOMMENDED PER MAG SPECIFICATION 215 AFTER INSTALLATION OF IRRIGATION LINES, AND STABILIZATION OF DECOMPOSED GRANITE IS ALSO RECOMMENDED.
12.

THE CONTRACTOR SHALL COMPLY WITH ALL PROVISIONS SPECIFIED IN THE GEOTECHNICAL INVESTIGATION. NO PONDING DEEPER THAN 0.05' IS PERMITTED WITHIN 10' OF ANY BUILDING.
13.

THE CLIENT AND CONTRACTOR ASSUME ALL RESPONSIBILITY AND COSTS INCURRED IF THEY ELECT TO LANDSCAPE RETENTION BASINS BEFORE THE REQUIRED RETENTION VOLUMES HAVE BEEN CERTIFIED BY THE ENGINEER.
14.

THE CONTRACTOR SHALL OBTAIN PERMISSION FROM THE OWNER'S ENGINEER-OF-RECORD PRIOR TO BACKFILLING ANY WET OR DRY UTILITY MAIN OR SERVICE LINES TO ENSURE ALL INSPECTIONS AND TESTING HAS BEEN COMPLETED. NO UTILITY LINES SHALL BE BACKFILLED UNTIL AS-BUILT HORIZONTAL AND VERTICAL LOCATIONS HAVE BEEN OBTAINED. ANY ADDITIONAL COST REQUIRED
15.

THE CONTRACTOR SHALL REGISTER ALL DRYWELLS WITH THE ARIZONA DEPARTMENT OF ENVIRONMENTAL QUALITY AT THE CONCLUSION OF INSTALLATION AND TESTING. DRYWELL REGISTRATION NUMBERS SHALL BE PROVIDED TO THE OWNEN AND ENGINEER OR RECORD.

STAKING NOTES

CALL THE BLUE STAKE CENTER (263-1100) 48 HOURS BEFORE DIGGING FOR LOCATION OF UNDERGROUND UTILITIES.

ALL OFFSET OR REFERENCE STAKES SET BY THE ENGINEER ARE TO BE MAINTAINED INTACT. NO CLAIMS FOR ADDITIONAL COMPENSATION FOR CORRECTIONS SHALL BE PRESENTED TO ANY PARTY UNLESS SUCH STAKES ARE PRESENT AND THEIR ORIGIN IS VERIFIED. IF STAKES ARE NOT MAINTAINED INTACT, ALL CORRECTIONS SHALL BE MADE BY THE CONTRACTOR AT HIS EXPENSE.

ONE SET OF STAKES WILL BE FURNISHED BY THE OWNER FOR THE WATER LINE, WATER SERVICES, FIRE HYDRANT LOCATIONS AND GRADE, SEWER LINES AND SERVICES, CONCRETE SUBGRADE AND A.B.C.. ALL ADDITIONAL STAKING TO BE CHARGED TO THE CONTRACTOR. 24 WORKING HOUR NOTICE IS REQUIRED FOR STAKING BY THE SUBDIVISION ENGINEER.

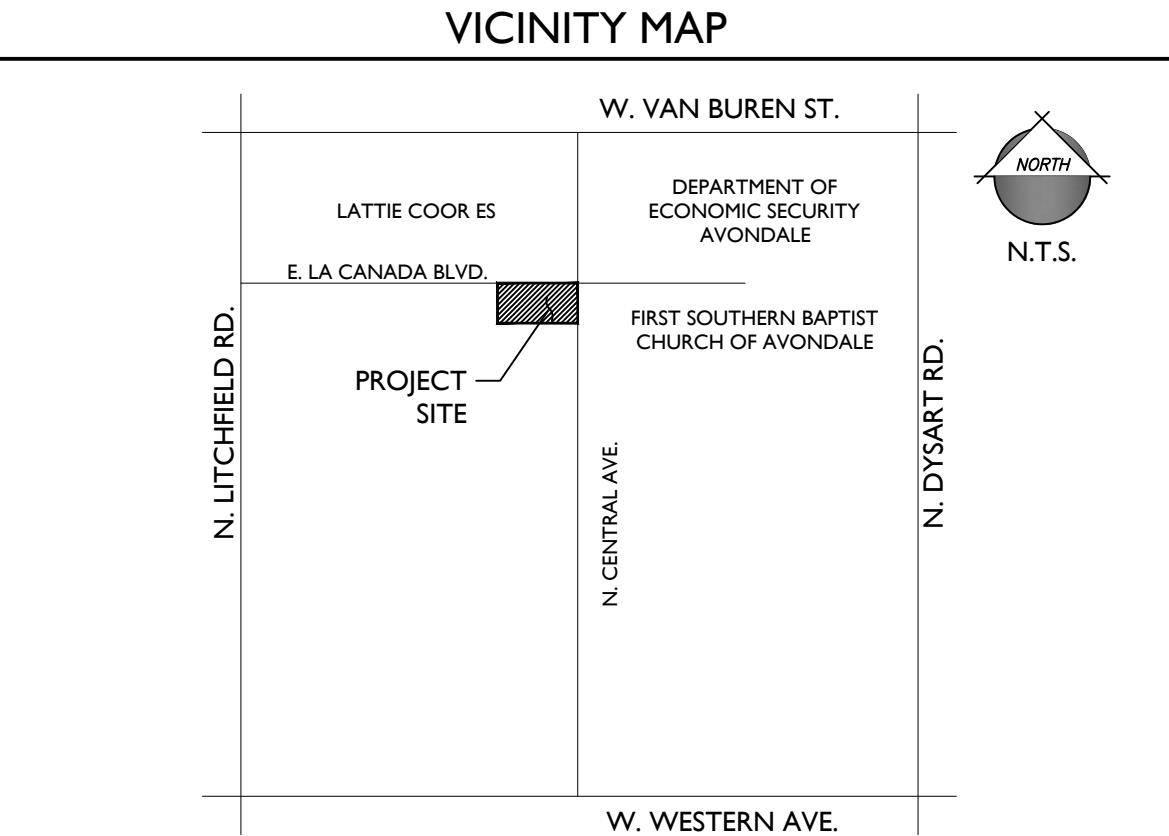
IMPROVEMENT PLANS
FOR
ELISEO C. FELIX SCHOOL

A PORTION OF SECTION 10, TOWNSHIP 1 NORTH, RANGE 1 WEST
OF THE GILA AND SALT RIVER MERIDIAN MARICOPA COUNTY, ARIZONA.

ESTIMATED QUANTITIES

QUANTITIES ARE FOR ESTIMATING PURPOSES ONLY.
ENGINEER MAKES NO GUARANTEE OF ACCURACY.

ITEM	QUANTITY
OFFSITE PAVEMENT NOTES	
9 CURB TRANSITION; 6" V.C.&G. TO 4" ROLL CURB	2 EA
10 26' DRIVEWAY PER MAG STD DTL 250-2	2 EA
11 CONSTRUCT NEW FENCE	63 LF
14 ONE-WAY INGRESS DRIVEWAY; CITY OF GOODYEAR DETAIL	1 EA
G-3236	
REMOVAL NOTES	
1 SAWCUT, REMOVE, AND & REPLACE EXISTING PAVEMENT; 2' MIN	33 SY
2 REMOVE EXISTING CONCRETE	605 SF
4 REMOVE EXIST CURB AND GUTTER	150 LF
12 REMOVE EXISTING FENCE	56 LF



PROJECT TEAM

OWNER/DEVELOPER AVONDALE ELEMENTARY SCHOOL DISTRICT #44 100 S. 3RD AVE. AVONDALE, AZ 85323	CONSULTANT: EPS GROUP, INC. 1130 N. ALMA SCHOOL RD. STE 120 MESA, AZ 85201 TEL: (480)-503-2250 CONTACT: DANIEL AUXIER dan.auxier@EPSGROUPINC.COM
---	---

BASIS OF BEARING

SOUTH 00 DEGREES 07 MINUTES 10 SECONDS WEST, THE EAST LINE OF THE SOUTHEAST QUARTER OF THE NORTHWEST QUARTER OF SECTION 10, TOWNSHIP 1 NORTH, RANGE 1 WEST OF THE GILA AND SALT RIVER BASE AND MERIDIAN, MARICOPA COUNTY, ARIZONA

BENCHMARK

STATION G332
BRASS CAP IN HANDHOLE
PUBLISHED ELEVATION = 981.64' (CITY OF GOODYEAR)

FLOOD ZONE INFORMATION:

THIS PROJECT IS LOCATED WITHIN ZONE X OF THE F.E.M.A. FLOOD INSURANCE RATE MAP, #04013C2155L, DATED OCT 16, 2013.

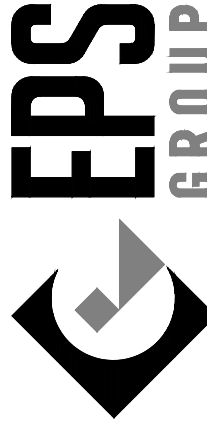
ZONE X IS DEFINED AS: AREAS OF 0.2% ANNUAL CHANCE FLOOD; AREAS OF 1% ANNUAL CHANCE FLOOD WITH AVERAGE DEPTHS OF LESS THAN 1 FOOT OR WITH DRAINAGE AREAS LESS THAN 1 SQUARE MILE; AND AREAS PROTECTED BY LEVEES FROM 1% ANNUAL CHANCE FLOOD.

AS-BUILT CERTIFICATION:

I HEREBY CERTIFY THAT THE "RECORD DRAWING" MEASUREMENTS AS SHOWN HEREON WERE MADE UNDER MY SUPERVISION OR AS NOTED AND ARE CORRECT TO THE BEST OF MY KNOWLEDGE AND BELIEF.

REGISTERED ENGINEER/LAND SURVEYOR REGISTRATION NUMBER DATE

1130 N Alma School Road
Suite 120
Mesa, AZ 85201
T:480.503.2250 | F:480.503.2258
www.epsgroupinc.com



Eliseo C. Felix School

540 La Prada, Goodyear, Arizona 85338

Cover Sheet

Project:

Revisions:



Designer: DBA
Drawn by: DBA

Preliminary
Not For
Construction
Or
Recording

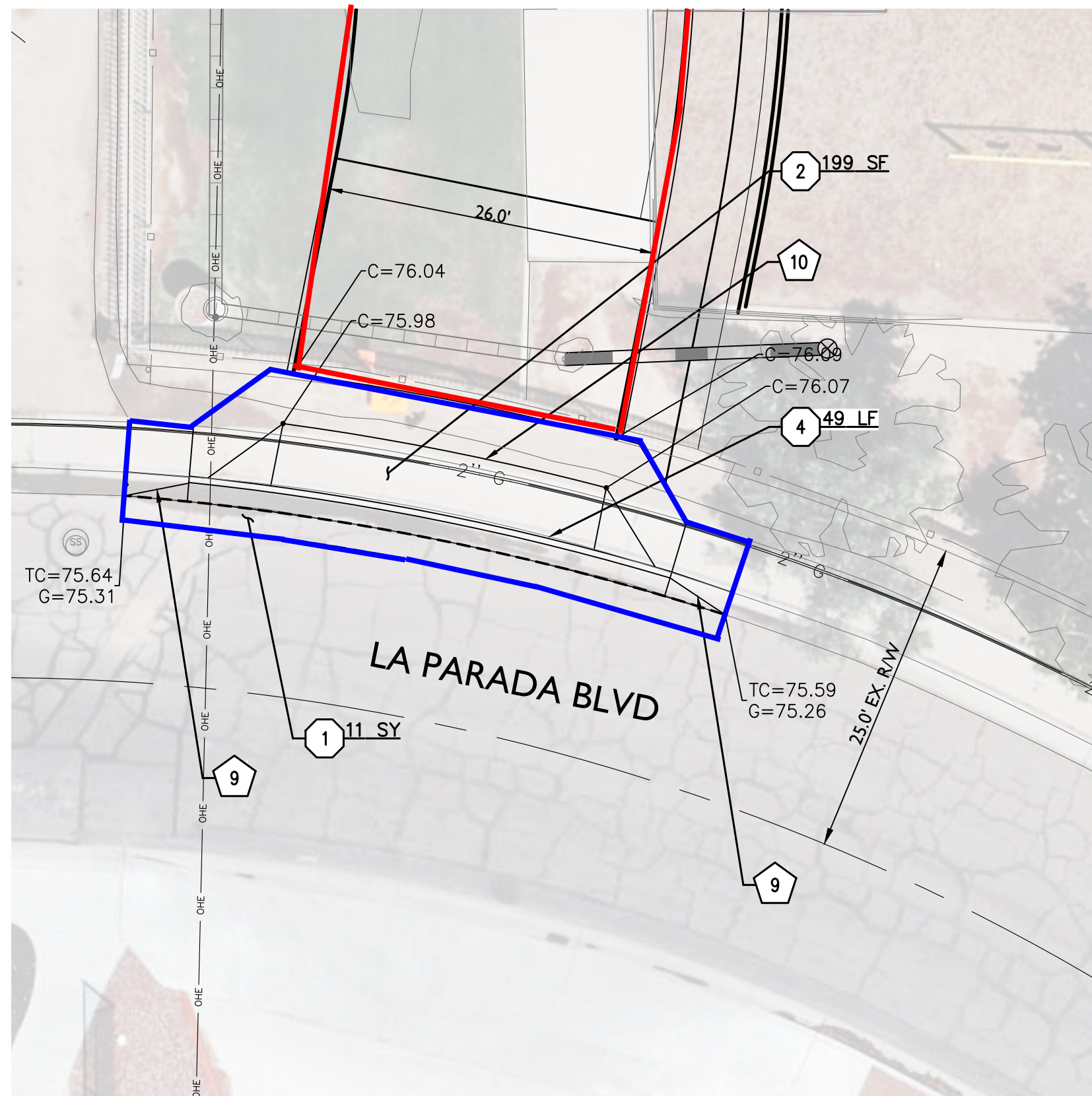
Job No.


18-034


C100

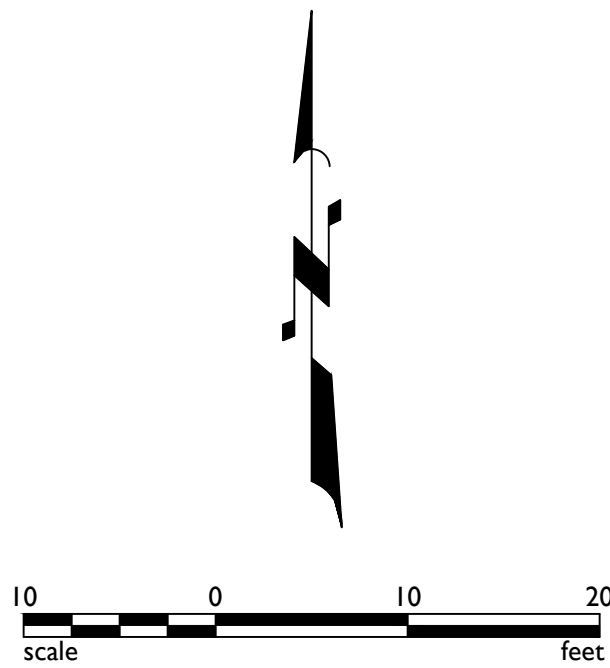
Sheet No.

1
of 2



 OFF-SITE ADJACENT
WAYS

 ON-SITE ADJACENT
WAYS



<u>OFFSITE PAVEMENT NOTES</u>		
9	CURB TRANSITION; 6" V.C.&G. TO 4" ROLL CURB	2 EA
10	26' DRIVEWAY PER MAG STD DTL 250-2	2 EA
11	CONSTRUCT NEW FENCE	63 LF
14	ONE-WAY INGRESS DRIVEWAY; CITY OF GOODYEAR DETAIL	1 EA
G-3236		
<u>REMOVAL NOTES</u>		
1	SAWCUT, REMOVE, AND & REPLACE EXISTING PAVEMENT; 2' MIN	33 SY
2	REMOVE EXISTING CONCRETE	605 SF
4	REMOVE EXIST CURB AND GUTTER	150 LF
12	REMOVE EXISTING FENCE	56 LF