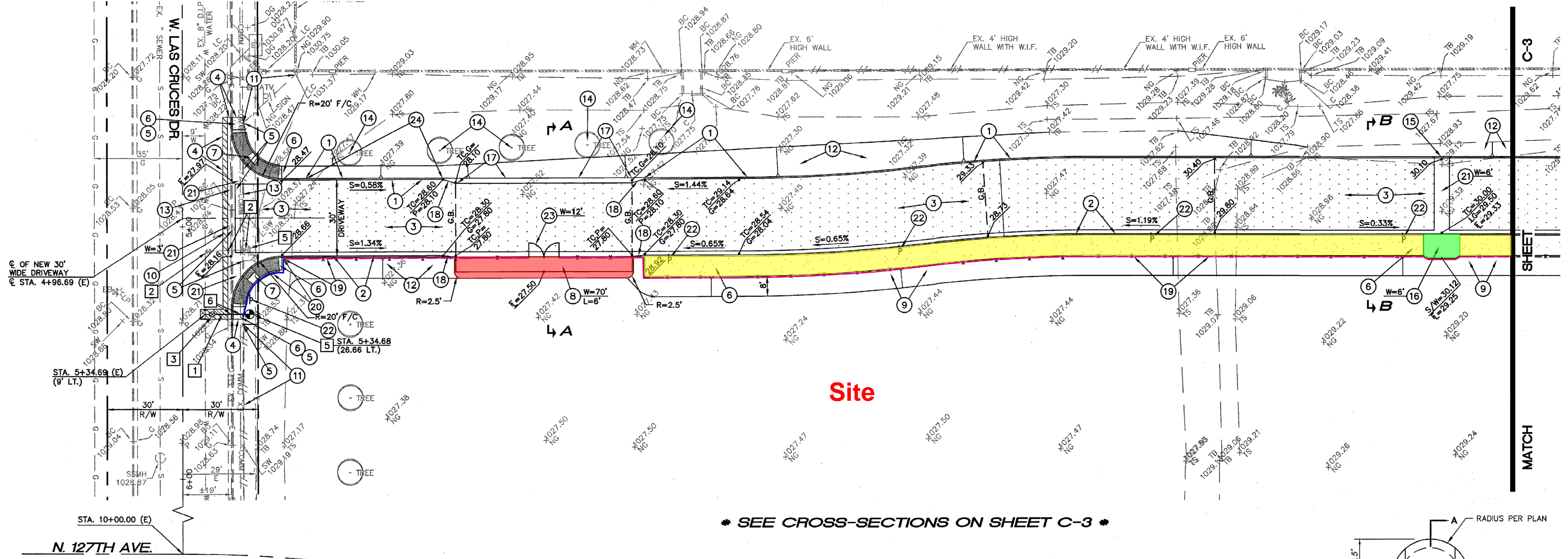


HESS - ROUNTREE, INC.  
CONSULTING ENGINEERS & LAND SURVEYORS  
9831 SOUTH 51ST STREET, SUITE C110  
PHOENIX, ARIZONA 85044 (480)496-0244

DES. **VR** DRN. **ARS** CKD. **DRO** JOB NO. **1811-05**



Site

\* SEE CROSS-SECTIONS ON SHEET C-3 \*

**GRADING AND DRAINAGE CONSTRUCTION NOTES:**

1. INSTALL CONCRETE SINGLE CURB (MAG STANDARD DETAIL NO. 222, TYPE 'A').
2. INSTALL CONCRETE VERTICAL CURB AND GUTTER (MAG STANDARD DETAIL NO. 220-1, TYPE A).
3. INSTALL 3" A.C. (TYPE C-3/4) OVER 7" A.B.C. OVER COMPACTED SUBGRADE.
4. MATCH EXISTING CONCRETE CURB/CONCRETE SIDEWALK/PAVEMENT ELEVATION AND LOCATION.
5. REMOVE EXISTING CONCRETE SIDEWALK AND WROUGHT IRON FENCE AS REQUIRED FOR NEW CONSTRUCTION.
6. INSTALL CONCRETE SIDEWALK (MAG STANDARD DETAIL NO. 230).
7. CONSTRUCT CURB RAMP (MAG STANDARD DETAIL NO. 235-3).
8. CONSTRUCT SIDEWALK SPLASHPAD (SEE DETAIL ON SHEET C-2).
9. STRAIGHT GRADE AT A 5:1 MAXIMUM SLOPE FROM 1" BELOW TOP OF SIDEWALK TO MATCH EXISTING GRADE.
10. SAWCUT, REMOVE AND REPLACE A MINIMUM TWO FEET (2') OF EXISTING A.C. PAVEMENT IN KIND.
11. EXISTING WROUGHT IRON FENCE TO REMAIN. PROTECT FROM DAMAGE.
12. STRAIGHT GRADE AT A 5:1 MAXIMUM SLOPE FROM 6" BELOW TOP OF CURB TO MATCH EXISTING GRADE.
13. FIELD VERIFY LOCATION AND ELEVATION OF EXISTING COMMUNICATION AND ELECTRICAL LINES PRIOR TO THE START OF THE CONSTRUCTION. PROTECT FROM DAMAGE.
14. EXISTING TREE TO REMAIN. PROTECT FROM DAMAGE.
15. CONSTRUCT 6' WIDE CURB OPENING (SEE DETAIL ON SHEET C-2).
16. CONSTRUCT CONCRETE SCUPPER WITH NO SPILLWAY (MAG STANDARD DETAIL NO. 206-1, WIDTH PER PLAN).
17. INSTALL CONCRETE RIBBON CURB (MAG STANDARD DETAIL NO. 220-1, TYPE B).
18. TRANSITION FROM CONCRETE VERTICAL CURB AND GUTTER/SINGLE CURB TO A CONCRETE RIBBON CURB IN 5 FEET.

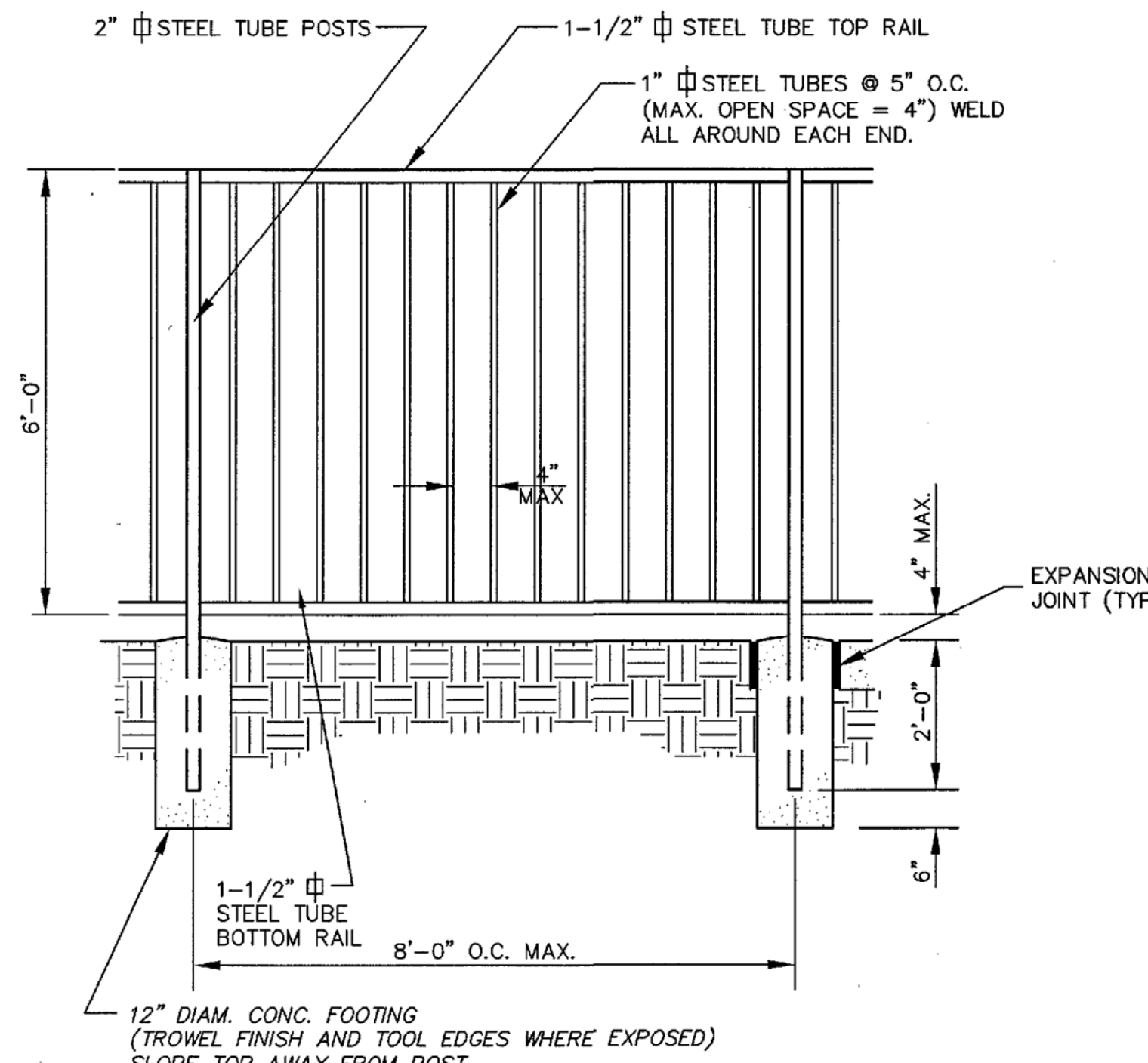
19. NEW CHAIN LINK FENCE AND/OR GATE.
20. NEW WROUGHT IRON FENCE.
21. CONSTRUCT CONCRETE VALLEY GUTTER AND APRON (MAG STANDARD DETAIL NO. 240, WIDTH PER PLAN).
22. INSTALL "BUSES ONLY" SIGN WITH 6" HIGH BLACK LETTER ON WHITE REFLECTIVE BACKGROUND. POST AND BASE SHALL CONFORM TO MAG STANDARD DETAIL NO. 131, TYPE 'C'.

**PUBLIC FIRE HYDRANT CONSTRUCTION NOTES:**

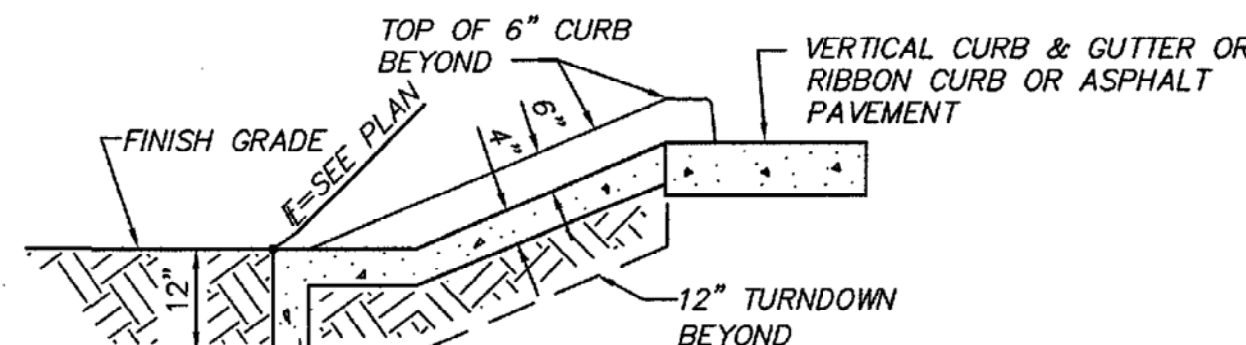
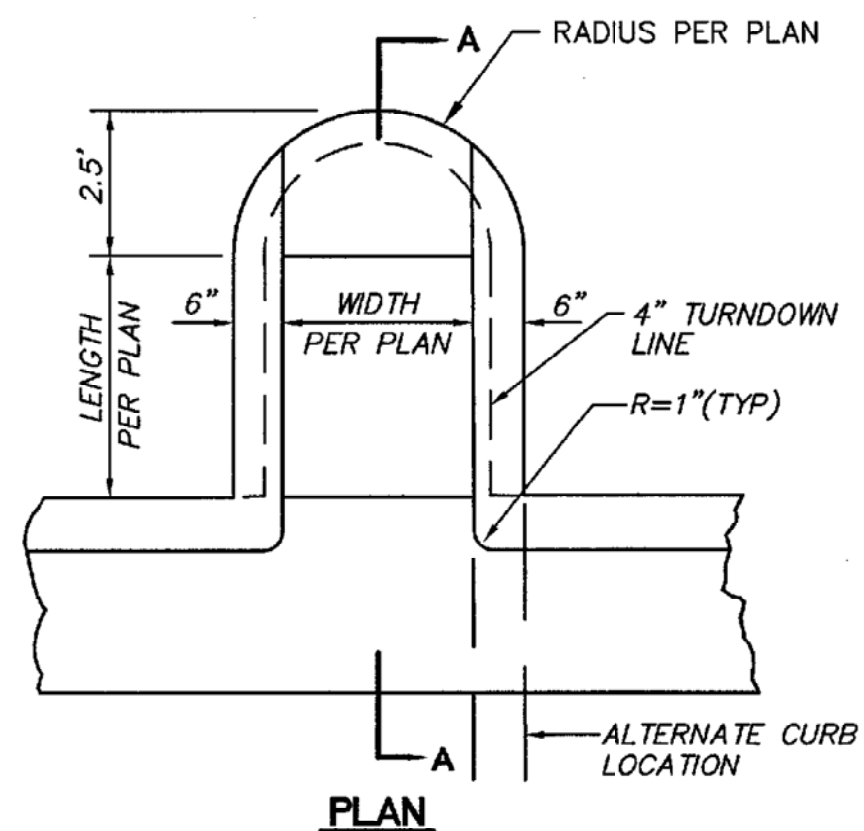
1. INSTALL 6" DUCTILE IRON (PRESSURE CLASS 350) WATER LINE INCLUDING ALL BENDS, TEES, FITTINGS AND THRUST BLOCKS.
2. REMOVE EXISTING WATER LINE BETWEEN LIMITS SHOWN. TURN OFF AND ABANDON EXISTING GATE VALVE. INSTALL WATERTIGHT CAP AND THRUST BLOCK PER MAG AND CITY OF LITCHFIELD PARK SERVICE COMPANY LIBERTY UTILITIES REQUIREMENTS.
3. INSTALL 6" GATE VALVE WITH VALVE BOX AND COVER WITH CHAIN ATTACHMENT (MAG STANDARD DETAIL NO. 391-1, TYPE 'C' AND MAG STANDARD DETAIL NO. 270).
4. INSTALL 8" X 6" TEE WITH NECESSARY AND APPROPRIATE FITTINGS. FIELD VERIFY SIZE, ELEVATION AND LOCATION OF THE EXISTING WATER LINE PRIOR TO THE START OF CONSTRUCTION.
5. REMOVE, SALVAGE AND REINSTALL EXISTING FIRE HYDRANT. REPAIR AND REPAINT AS REQUIRED. WARRANT AS IF NEW. REINSTALL PER MAG AND CITY OF LITCHFIELD PARK SERVICE COMPANY LIBERTY UTILITIES REQUIREMENTS.
6. SAWCUT, REMOVE AND REPLACE A MINIMUM TWO FEET (2') OF EXISTING A.C. PAVEMENT IN KIND.

**NOTE:**

COLOR OF ALL WROUGHT IRON FENCE TO MATCH EXISTING.



**WROUGHT IRON FENCE DETAIL**  
NOT TO SCALE



**CONCRETE SPLASHPAD DETAIL**  
NOT TO SCALE

**GRADING AND DRAINAGE PLAN**

LITCHFIELD ELEMENTARY SCHOOL DISTRICT			
BUS DROP OFF AT WIGWAM ELEMENTARY SCHOOL			
DRAWING STATUS	SHEET	OF	
1ST COUNTY SUBMITTAL	2	3	C-2
DATE:	03/29/19		

