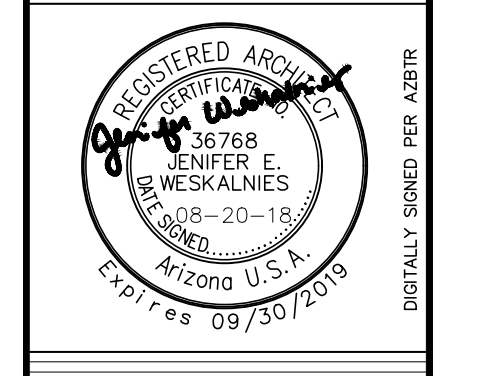


**OVERALL SITE PLAN  
CORDOVA MIDDLE SCHOOL**

SCALE: 1" = 40'-0"



**ALHAMBRA ELEMENTARY  
SCHOOL DISTRICT**  
 4510 N. 37TH AVE.  
 PHOENIX, ARIZONA 85019  
**CORDOVA MIDDLE SCHOOL  
GYMNASIUM ADDITION**

Revisions	Date	Description

Project Number 5995-100	Date 09-20-2018	Drawn By GK	Checked By
----------------------------	--------------------	----------------	------------