



PARTNERS

Robert L. Pian, AIA, NCARB

William R. Pittenger, RA, CSI

Mark A. Davenport, AIA, LEED AP BD+C

ASSOCIATES

Richard K. Begay Jr., AIA

Neil L. Pieratt, RA, LEED AP BD+C

Architectural Supplemental Instructions

Project Name: Creighton Elementary School

ASI No: 045

Owner: Creighton Elementary School District

Date: 1/09/2020

2702 E. Flower Street

Phoenix, AZ 85016

Contractor: Chase Building Team

Project No.: 1749

2400 W Broadway Road

Mesa, AZ 85202

Subject: CES Offsite Drawings

The work shall be carried out in accordance with the following field instructions issued in accordance with the Contract Documents provided that there will be no change in Contract Sum or Contract Time. Should it be your considered opinion that a change in the Contract Sum or Contract Time is necessary for incorporation of this work, you shall promptly notify the Architect with specific reasons or cause. Under no conditions shall you proceed with this order without prior written acknowledgement or acceptance of specific change in Contract Sum or Contract Time. Proceeding with this directiveshall constitute acceptance without additional cost or additional time.

Description: Review attached sheets

Attachments: Paving Plans sheets 1-3, Paint & Sign Plan, Traffic Sheets 1-4, Traffic Control Easement 2 pages

Notes:

By: Neil L. Pieratt

Received By: _____

Contractor

SPS+ Architects

Date: _____

Date: 01/09/2020

CITY OF PHOENIX NOTES FOR PAVING PLANS

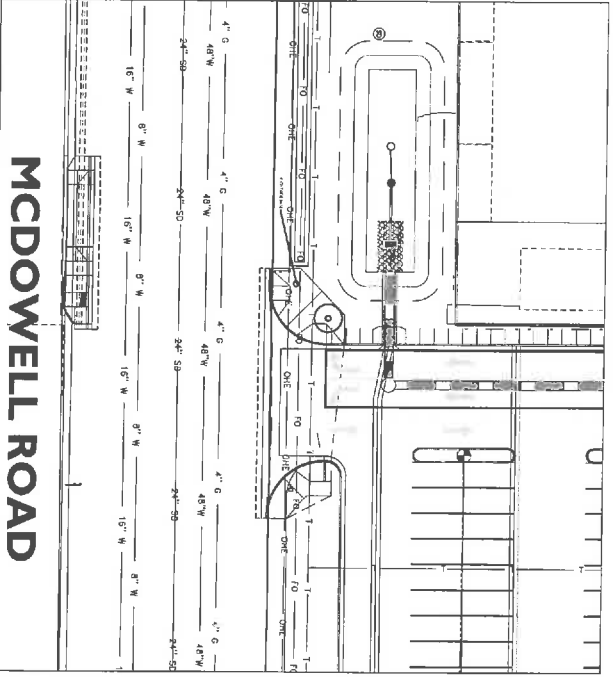
- 1. COMPARE THIS PLAN WITH AS SECTIONS 4.01 AND 4.02 OF THE CITY OF PHOENIX MUNICIPAL CODE... 2. THE CITY OF PHOENIX HAS A DEDICATED AND CONVEYED TO THE CITY OF PHOENIX... 3. THE CITY OF PHOENIX HAS A DEDICATED AND CONVEYED TO THE CITY OF PHOENIX... 4. THE CITY OF PHOENIX HAS A DEDICATED AND CONVEYED TO THE CITY OF PHOENIX... 5. THE CITY OF PHOENIX HAS A DEDICATED AND CONVEYED TO THE CITY OF PHOENIX... 6. THE CITY OF PHOENIX HAS A DEDICATED AND CONVEYED TO THE CITY OF PHOENIX... 7. THE CITY OF PHOENIX HAS A DEDICATED AND CONVEYED TO THE CITY OF PHOENIX... 8. THE CITY OF PHOENIX HAS A DEDICATED AND CONVEYED TO THE CITY OF PHOENIX... 9. THE CITY OF PHOENIX HAS A DEDICATED AND CONVEYED TO THE CITY OF PHOENIX... 10. THE CITY OF PHOENIX HAS A DEDICATED AND CONVEYED TO THE CITY OF PHOENIX... 11. THE CITY OF PHOENIX HAS A DEDICATED AND CONVEYED TO THE CITY OF PHOENIX... 12. THE CITY OF PHOENIX HAS A DEDICATED AND CONVEYED TO THE CITY OF PHOENIX... 13. THE CITY OF PHOENIX HAS A DEDICATED AND CONVEYED TO THE CITY OF PHOENIX... 14. THE CITY OF PHOENIX HAS A DEDICATED AND CONVEYED TO THE CITY OF PHOENIX... 15. THE CITY OF PHOENIX HAS A DEDICATED AND CONVEYED TO THE CITY OF PHOENIX... 16. THE CITY OF PHOENIX HAS A DEDICATED AND CONVEYED TO THE CITY OF PHOENIX... 17. THE CITY OF PHOENIX HAS A DEDICATED AND CONVEYED TO THE CITY OF PHOENIX... 18. THE CITY OF PHOENIX HAS A DEDICATED AND CONVEYED TO THE CITY OF PHOENIX... 19. THE CITY OF PHOENIX HAS A DEDICATED AND CONVEYED TO THE CITY OF PHOENIX... 20. THE CITY OF PHOENIX HAS A DEDICATED AND CONVEYED TO THE CITY OF PHOENIX...

CITY OF PHOENIX NOTES

- 1. CITY OF PHOENIX NOTES: THE CITY ENGINEER HAS REVIEWED THIS PLAN AND APPROVED IT FOR THE CITY OF PHOENIX... 2. THE CITY OF PHOENIX HAS A DEDICATED AND CONVEYED TO THE CITY OF PHOENIX... 3. THE CITY OF PHOENIX HAS A DEDICATED AND CONVEYED TO THE CITY OF PHOENIX... 4. THE CITY OF PHOENIX HAS A DEDICATED AND CONVEYED TO THE CITY OF PHOENIX... 5. THE CITY OF PHOENIX HAS A DEDICATED AND CONVEYED TO THE CITY OF PHOENIX... 6. THE CITY OF PHOENIX HAS A DEDICATED AND CONVEYED TO THE CITY OF PHOENIX... 7. THE CITY OF PHOENIX HAS A DEDICATED AND CONVEYED TO THE CITY OF PHOENIX... 8. THE CITY OF PHOENIX HAS A DEDICATED AND CONVEYED TO THE CITY OF PHOENIX... 9. THE CITY OF PHOENIX HAS A DEDICATED AND CONVEYED TO THE CITY OF PHOENIX... 10. THE CITY OF PHOENIX HAS A DEDICATED AND CONVEYED TO THE CITY OF PHOENIX... 11. THE CITY OF PHOENIX HAS A DEDICATED AND CONVEYED TO THE CITY OF PHOENIX... 12. THE CITY OF PHOENIX HAS A DEDICATED AND CONVEYED TO THE CITY OF PHOENIX... 13. THE CITY OF PHOENIX HAS A DEDICATED AND CONVEYED TO THE CITY OF PHOENIX... 14. THE CITY OF PHOENIX HAS A DEDICATED AND CONVEYED TO THE CITY OF PHOENIX... 15. THE CITY OF PHOENIX HAS A DEDICATED AND CONVEYED TO THE CITY OF PHOENIX... 16. THE CITY OF PHOENIX HAS A DEDICATED AND CONVEYED TO THE CITY OF PHOENIX... 17. THE CITY OF PHOENIX HAS A DEDICATED AND CONVEYED TO THE CITY OF PHOENIX... 18. THE CITY OF PHOENIX HAS A DEDICATED AND CONVEYED TO THE CITY OF PHOENIX... 19. THE CITY OF PHOENIX HAS A DEDICATED AND CONVEYED TO THE CITY OF PHOENIX... 20. THE CITY OF PHOENIX HAS A DEDICATED AND CONVEYED TO THE CITY OF PHOENIX...

PAVING PLANS FOR CREIGHTON ELEMENTARY SCHOOL PHOENIX, ARIZONA

A PORTION OF THE NORTHWEST QUARTER OF SECTION 24, TOWNSHIP 2 NORTH, RANGE 1 EAST OF THE GILA AND SALT RIVERS, MARICOPA COUNTY, ARIZONA



ESTIMATED QUANTITIES table with columns: ITEM, QUANTITIES ARE FOR ESTIMATE PURPOSES ONLY, ENGINEER DOES NOT GUARANTEE OF ACCURACY, QUANTITY.

COORDINATION LIST table with columns: SHEET NO., DESCRIPTION, SHEET NO., DATE.

GEOTECHNICAL REPORT: GEOTECHNICAL ENGINEERING REPORT NEW... 2023.03.15...

ARCHITECT: SPS ARCHITECTS, 6821 E. VAN DE HOOFF... 480.971.0000...

CIVIL ENGINEER: BRISQUEN INC, 1129 N. ALAN SCODD RD... 480.971.0000...

LANDSCAPE ARCHITECT: SPS ARCHITECTS, 6821 E. VAN DE HOOFF... 480.971.0000...

GENERAL CONTRACTOR: CHRYSLER, 2468 W. BROADWAY... 480.451.7777...

BENCHMARK: MARKS FOR POINT, END OF BRANCHING BOX... 100001...

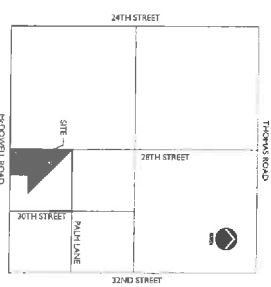
PROJECT DESCRIPTION: RECONSTRUCTION OF EXISTING DRIVEWAY AND PARTIAL SIDEWALK ALONG MCDOWELL ROAD...

APPROVALS: THIS SET OF PLANS HAS BEEN REVIEWED FOR COMPLIANCE WITH CITY REQUIREMENTS... CITY ENGINEER: DATE

AS-BUILT CERTIFICATION: CONTRACTOR TO VERIFY ALL AS-BUILT INFORMATION WITH THE ORIGINAL PLAN... CITY ENGINEER: DATE

DEVELOPER AND SUBMITTER table with columns: REGISTRATION NUMBER, DATE.

DESIGNATION NUMBER, DATE table.



OWNER: CREIGHTON SCHOOL DISTRICT, 2102 LORAIN STREET... 602.361.6600...

LANDSCAPE ARCHITECT: SPS ARCHITECTS, 6821 E. VAN DE HOOFF... 480.971.0000...

GENERAL CONTRACTOR: CHRYSLER, 2468 W. BROADWAY... 480.451.7777...

GEOTECHNICAL ENGINEER: BRISQUEN INC, 1129 N. ALAN SCODD RD... 480.971.0000...

BENCHMARK: MARKS FOR POINT, END OF BRANCHING BOX... 100001...

PROJECT DESCRIPTION: RECONSTRUCTION OF EXISTING DRIVEWAY AND PARTIAL SIDEWALK ALONG MCDOWELL ROAD...

APPROVALS: THIS SET OF PLANS HAS BEEN REVIEWED FOR COMPLIANCE WITH CITY REQUIREMENTS... CITY ENGINEER: DATE

AS-BUILT CERTIFICATION: CONTRACTOR TO VERIFY ALL AS-BUILT INFORMATION WITH THE ORIGINAL PLAN... CITY ENGINEER: DATE

DEVELOPER AND SUBMITTER table with columns: REGISTRATION NUMBER, DATE.

DESIGNATION NUMBER, DATE table.

SPS ARCHITECTS logo and contact information.

CREIGHTON ELEMENTARY SCHOOL REPLACEMENT PROJECT 2802 E. MCDOWELL RD PHOENIX, AZ

Professional Engineer and Architect stamps, project information, and page number.

17-410 Creighton Elementary School

Jun 07, 2020 9:20am S:\Projects\2017\17-410\Construction\07-528 Plans\17-410 - P01.cdw

S P S + ARCHITECTS
 897 RICHMOND AVENUE
 SCOTSDALE, AZ 85268
 TEL: 480.941.0000
 FAX: 480.941.0001
 WWW.SPSARCHITECTS.COM

CREIGHTON ELEMENTARY SCHOOL
 REPLACEMENT PROJECT
 2802 E. MCDOWELL RD
 PHOENIX, AZ

NO.	DATE	DESCRIPTION
1	06/07/20	ISSUED FOR PERMITS
2	06/07/20	ISSUED FOR PERMITS
3	06/07/20	ISSUED FOR PERMITS

100% SUBMITTAL

REVIEWED BY: RFS
 DRAWN BY: CMA



DATE: 06/07/20
 JOB NO: 17-410
 SHEET: 3

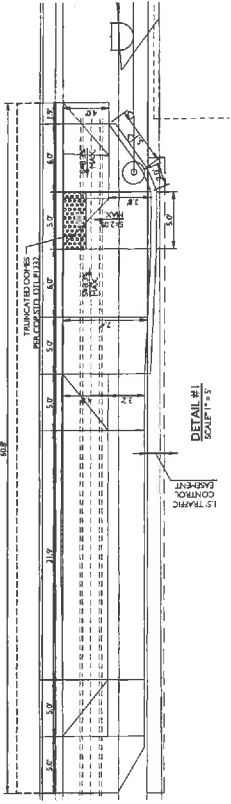
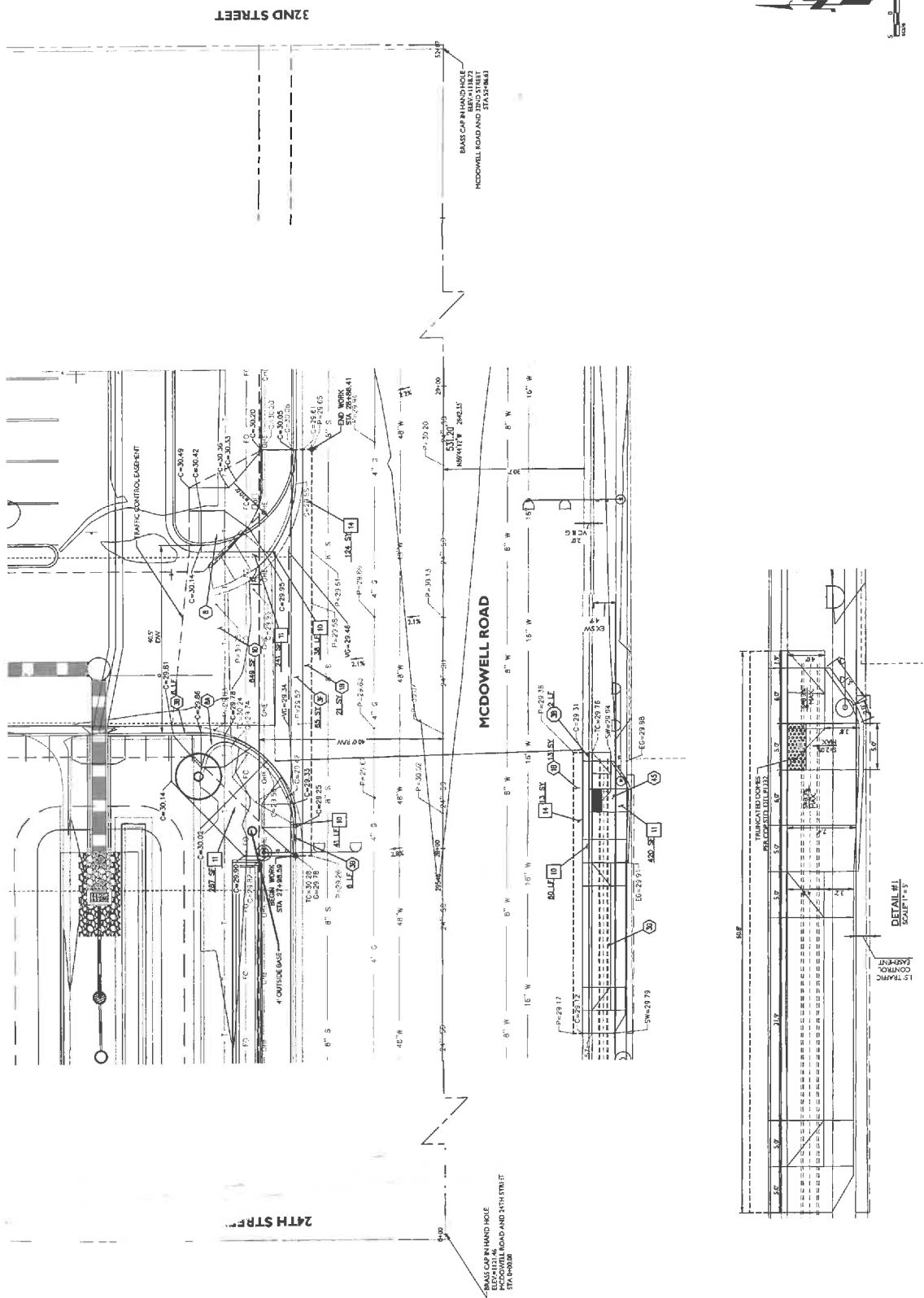
of 3

- 1 EA
- 24 SY
- 648 SF
- 12 LF
- 65 SY

- REMOVAL NOTES**
- 10 SAWCUT AND REMOVE EXISTING CURB AND GUTTER.
 - 11 SAWCUT AND REMOVE EXISTING SIDEWALK.
 - 14 SAWCUT AND REMOVE EXISTING ASPHALT PAVEMENT TO CLEAN EDGE.

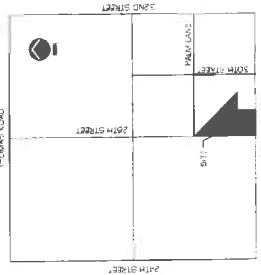
- CONSTRUCTION NOTES**
- 136 LF HEAVY DUTY PAVEMENT SECTION 8 AC ON 8" AGC OR MATCH EXISTING. WIDER IS THE THICKER.
 - 948 SF CONCRETE PAVEMENT SECTION 9 TYPE X POOP
 - 137 SY 6" VEE CURB AND GUTTER MAG STD DTL 230-1 TYPE A
 - 6" VALLEY GUTTER MAG STD DTL 240

- OTHER NOTES**
- 15A DRIVEWAY PER C.O.P. STD DTL P1295-1 MODIFIED TO MATCH SHOWN.
 - 15B CONSTRUCT SIDEWALK RAMP PER C.O.P. DTL P1240. MOVED AS SHOWN.
 - 15C CONSTRUCT SIDEWALK RAMP PER C.O.P. DTL P1238-2.
 - 15D CURB RAMP PER DETAIL 1 ON SHEET P001.

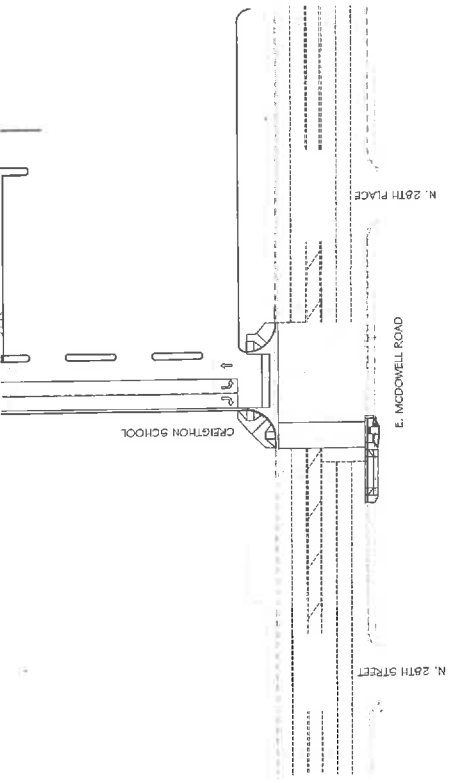


PAINT & SIGN PLAN FOR CREIGHTON ELEMENTARY SCHOOL PHOENIX, ARIZONA

A PORTION OF THE NORTHWEST QUARTER OF SECTION 24,
TOWNSHIP 2 NORTH, RANGE 3 EAST OF THE GUA AND SALT RIVER MERIDIAN,
MARICOPA COUNTY, ARIZONA



VICINITY MAP

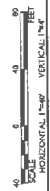


ARCHITECT:
SPS ARCHITECTS
1111 N. 19TH AVENUE, SUITE 100
PHOENIX, ARIZONA 85016
PHONE: 602.955.1000
FAX: 602.955.1001
EMAIL: info@spsarchitects.com

CIVIL ENGINEER:
REGALAP, INC.
1111 N. 19TH AVENUE, SUITE 100
PHOENIX, ARIZONA 85016
PHONE: 602.955.1000
FAX: 602.955.1001
EMAIL: info@regalap.com

OWNER:
CITY OF PHOENIX
2002 E. McDowell Street
Phoenix, Arizona 85016
PHONE: 602.955.1000

THIS PLAN AND SPECIFICATIONS SHALL BE SUBJECT TO THE CITY OF PHOENIX TRAFFIC ENGINEER'S REVIEW AND APPROVAL. THE CITY OF PHOENIX TRAFFIC ENGINEER SHALL HAVE THE FINAL SAY IN THE MATTER OF WHETHER THE PLAN AND SPECIFICATIONS ARE ACCEPTABLE. THE CITY OF PHOENIX TRAFFIC ENGINEER SHALL NOT BE RESPONSIBLE FOR THE DESIGN OF THE SIGNAGE OR THE STRUCTURE OF THE SIGNAGE. THE CITY OF PHOENIX TRAFFIC ENGINEER SHALL NOT BE RESPONSIBLE FOR THE DESIGN OF THE SIGNAGE OR THE STRUCTURE OF THE SIGNAGE.



STREET TRANSPORTATION DEPT.	
Paint & Sign	
CREIGHTON ELEMENTARY SCHOOL	
2802 E. MCDOWELL RD	
DATE	FILE NO.

PROJECT NO. 1585 EAST CREIGHTON @ CHANDLER AZ 85725
 PHONE 480.477.3679
 FAX 480.477.5807
 WWW.WRIGHTENGINEERING.COM
 WRIGHT PROJECT # 1585

DATE: 08/20/14
 DRAWN BY: [Signature]
 CHECKED BY: [Signature]
 APPROVED BY: [Signature]

PROPOSED FOUNDATION SCHEDULE

NO.	TYPE	SPACING FROM M/LP	W/CD	DEPTH FROM M/LP	HEIGHT FROM M/LP
1	SSP	28" x 15" x 3"	43.0' LT		
2	CCN	28" x 15" x 3"	43.0' LT		
3	SM	28" x 15" x 3"	43.0' LT		
4	SM	28" x 15" x 3"	43.0' LT		
5	SM	28" x 15" x 3"	43.0' LT		
6	SM	28" x 15" x 3"	43.0' LT		
7	SM	28" x 15" x 3"	43.0' LT		
8	SM	28" x 15" x 3"	43.0' LT		
9	SM	28" x 15" x 3"	43.0' LT		
10	SM	28" x 15" x 3"	43.0' LT		

PROPOSED JUNCTION BOX SCHEDULE

NO.	TYPE	SPACING FROM M/LP	W/CD	DEPTH FROM M/LP	HEIGHT FROM M/LP
1	SSP	28" x 15" x 3"	43.0' LT		
2	CCN	28" x 15" x 3"	43.0' LT		
3	SM	28" x 15" x 3"	43.0' LT		
4	SM	28" x 15" x 3"	43.0' LT		
5	SM	28" x 15" x 3"	43.0' LT		
6	SM	28" x 15" x 3"	43.0' LT		
7	SM	28" x 15" x 3"	43.0' LT		
8	SM	28" x 15" x 3"	43.0' LT		
9	SM	28" x 15" x 3"	43.0' LT		
10	SM	28" x 15" x 3"	43.0' LT		

INSTALL

1 thru 5 See Foundation Schedule
 6 thru 9 See Junction Box Schedule
 10 Schedule 40 PVC with #10 copper pull wire bent over lip of stubout.

2 2 1/2" Schedule 40 PVC with detectable mule tape
 3 2 1/2" Schedule 40 PVC with #10 copper pull wire bent over lip of stubout by Others
 4 2 1/2" Schedule 40 PVC with detectable mule tape - By Others

REMOVE

1 Traffic Signal Foundation - 4
 2 Junction Box - 2
 3 Pole-Mounted Equipment - 2

RAI NOTES:

The contractor shall notify the City of Phoenix Traffic Signal Shop (002-262-6723) a minimum of fourteen (14) calendar days prior to beginning any traffic signal work. Submittals of all equipment shall be furnished to the Traffic Signal Shop for review and approval. The contractor shall be responsible for the timing of any traffic signal equipment. The contractor shall work that the project commence set of drawings prior to start and ordering of any equipment.

Construction elevations must be within 1/4" of finished sidewalk grade.

The Contractor shall layout of all ADA ramps, junction boxes, and foundation locations for approval by the traffic signal representative. All ADA ramps shall be set out in white marking paint to determine base traffic signal pole locations. Maximum of four (4) feet of clearance is required between all traffic signal poles and the back edge of sidewalk pedestrian ramps.

Signal Plan approval is valid for 365 calendar days from date sealed. Construction shall not begin prior to the 365 days elapsing. The signal plans must be re-submitted for approval or an extension granted by the Traffic Signal Shop. The contractor shall be responsible for obtaining a complete set of construction drawings including current City of Phoenix traffic signal details, signal construction details, and standard detail drawings that are to be installed by others.

The contractor shall have a competent supervisor capable of reading and fully understanding the plans and specifications and thoroughly reviewed at the construction of traffic signals assigned to the project. The contractor shall be responsible for obtaining correct International Municipal Standard (IMS) specifications for all traffic signal equipment. The contractor shall be responsible for obtaining correct International Municipal Standard (IMS) specifications for all traffic signal equipment. The contractor shall be responsible for obtaining correct International Municipal Standard (IMS) specifications for all traffic signal equipment. The contractor shall be responsible for obtaining correct International Municipal Standard (IMS) specifications for all traffic signal equipment.

3. NOTE FOR CITY OF PHOENIX TRAFFIC SIGNAL POLES

2.1.1. The contractor shall provide and install one (1) City of Phoenix Type SM 1.1 pole, one (1) City of Phoenix Type US foundation, one (1) City of Phoenix Type 1 foundation, all with anchor bolts, nuts and bolts per C.O.P. specifications. The contractor shall be responsible for obtaining correct International Municipal Standard (IMS) specifications for all traffic signal equipment. The contractor shall be responsible for obtaining correct International Municipal Standard (IMS) specifications for all traffic signal equipment. The contractor shall be responsible for obtaining correct International Municipal Standard (IMS) specifications for all traffic signal equipment.

3. WORK TO BE PERFORMED BY THE CONTRACTOR

The contractor shall provide the traffic signal equipment as indicated in note 2.1. The contractor shall be responsible for obtaining correct International Municipal Standard (IMS) specifications for all traffic signal equipment. The contractor shall be responsible for obtaining correct International Municipal Standard (IMS) specifications for all traffic signal equipment. The contractor shall be responsible for obtaining correct International Municipal Standard (IMS) specifications for all traffic signal equipment.

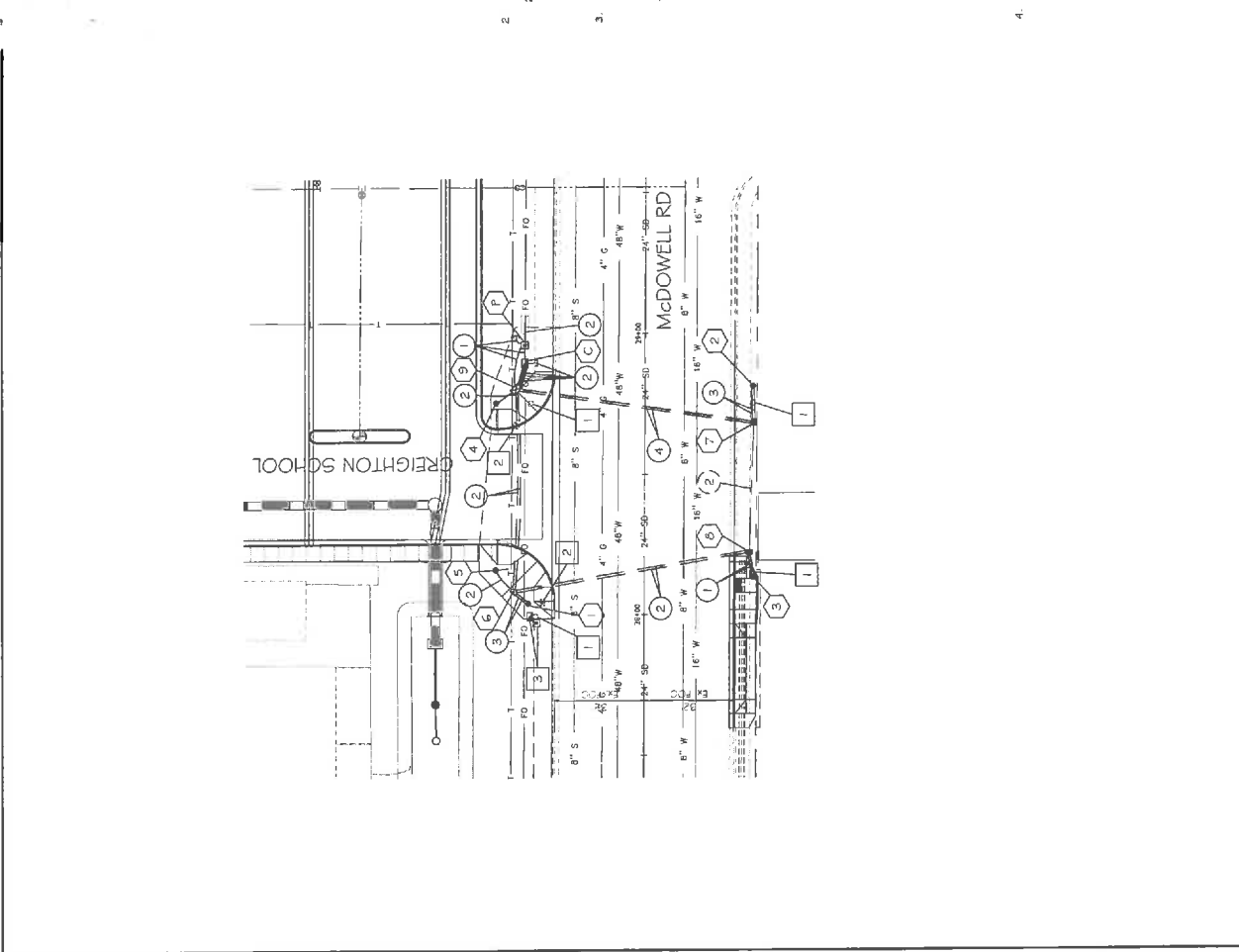
3.2. All underground conduits shall be schedule 40 rigid polyvinyl chloride (PVC) conduits. The contractor shall be responsible for obtaining correct International Municipal Standard (IMS) specifications for all traffic signal equipment. The contractor shall be responsible for obtaining correct International Municipal Standard (IMS) specifications for all traffic signal equipment. The contractor shall be responsible for obtaining correct International Municipal Standard (IMS) specifications for all traffic signal equipment.

3.3. Removal of existing street signs:

The contractor shall:
 - Remove the contractor of all street signs to be removed.
 - Provide a minimum of 24 hours notice to the contractor of all street signs to be removed.
 - Properly dispose of all street sign material.

4. WORK TO BE PERFORMED BY CITY OF PHOENIX SIGNAL CREWS

The City of Phoenix traffic signal crews will provide and install all above ground traffic signal equipment including:
 - All poles and mark areas
 - All signal heads
 - All LED lenses
 - All LED backlights
 - All LED push buttons
 - All controllers
 - All LED indicator lights
 - All signal wiring
 - All loop and non-invasive detectors
 - All pile grouting
 - All concrete
 - All rebar



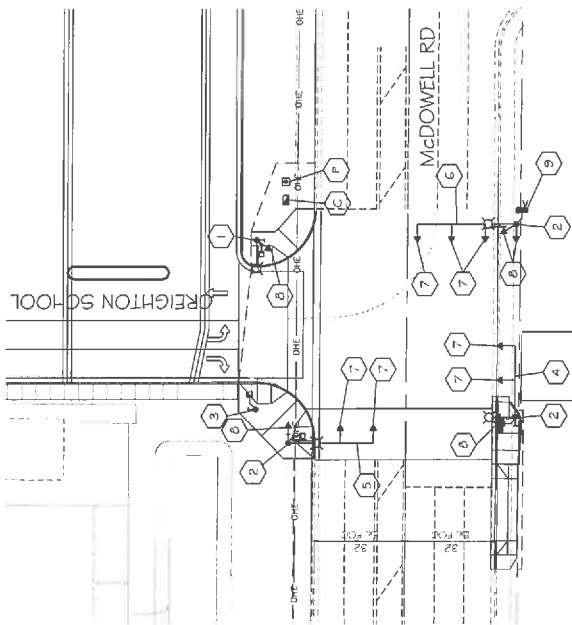
TRAFFIC SIGNAL PLANS
 CITY OF PHOENIX, ARIZONA
 STREET TRANSPORTATION DEPARTMENT
 McDOWELL RD @ CREIGHTON SCHOOL
 FOUNDATION

DATE: 08/20/14
 DRAWN BY: [Signature]
 CHECKED BY: [Signature]
 APPROVED BY: [Signature]

SCALE: 1" = 20'

REGION: 2
 STATE: AZ
 COUNTY: MARICOPA
 PROJECT NO.: 2019-001
 PROJECT NAME: McDowell Rd & Creighton School
 DATE: 08/20/2019
 DRAWN BY: [Signature]
 CHECKED BY: [Signature]
 APPROVED BY: [Signature]

- INSTALL**
- 1 Traffic Signal Pole Type LM With 5' Riser - 1 New
 - 2 Traffic Signal Pole Type SM - 1 New, 2 By Others
 - 3 Traffic Signal Pole Type A - 1 New
 - 4 25' Signal Mast Arm - 1 New
 - 5 30' Signal Mast Arm - 1 By Others
 - 6 35' Signal Mast Arm - 1 By Others
 - 7 Type F1 12" Signal Head - 2 New, 5 By Others (Mast Arm Mount with Flumberizer)
 - 8 Type F1 12" Signal Head - 2 New, 3 By Others (Pole Mount)
 - 9 Wireless Radio - 1 Relocated
 - 10 Phase Controller Cabinet - 1 New
 - 11 Power Service Pedestal - 1 New
 - 12 Luminaire
 - 13 LED - 2 New, 2 By Others
 - 14 Signs at Signal
 - 15 Illuminated Street Sign - 2 By Others
 - 16 Pedestrian Head - 3 New, 1 By Others
 - 17 Pedestrian Push Button - 3 New, 1 By Others
- Note: Adjust all signal head placement as shown on plan.



Type "F1" with Flumberizer
3 Section 12" Vehicle Signal Head
Mounted on Signal Mast Arm

Type "F1"
3 Section 12" Vehicle Signal Head
Mounted on Signal Pole



φ 1	φ 2	φ 3	φ 4
	→	→	→
φ 5	φ 6	φ 7	φ 8
	→	→	→
Banner			

PROJECT NO.: 2019-001
 PROJECT NAME: McDowell Rd & Creighton School
 DATE: 08/20/2019
 DRAWN BY: [Signature]
 CHECKED BY: [Signature]
 APPROVED BY: [Signature]

CITY OF PHOENIX, ARIZONA
 STREET TRANSPORTATION DEPARTMENT
 McDowell Rd & Creighton School
 EQUIPMENT

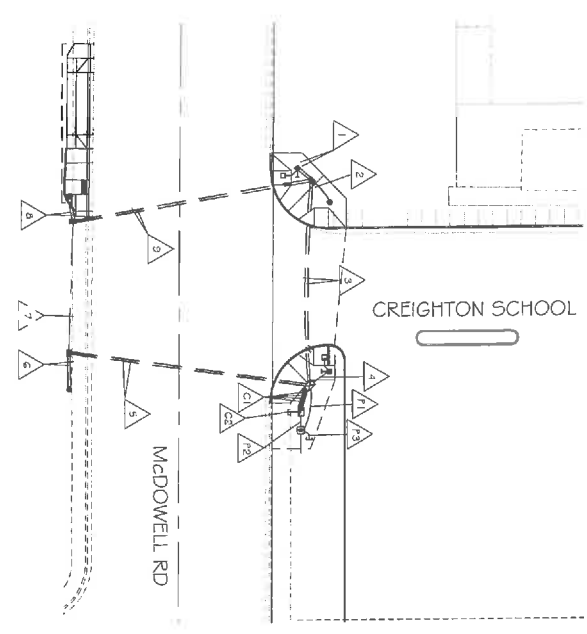
SCALE: 1" = 20'
 SHEET NO.: 2
 TOTAL SHEETS: 4

DATE: 11/24/2017
 PROJ. NO.: 2017-0002
 CLIENT: CITY OF PHOENIX
 PROJECT: TRAFFIC SIGNAL PLAN
 WRIGHT ENGINEERING CORPORATION
 1301 NORTH 16TH AVENUE, SUITE 100
 PHOENIX, AZ 85016
 WWW.WRIGHT-ENG.COM
 WRIGHT PROJECT # 2280



- 3-DIGRAM NOTES
- A New Wire
 - W Existing Wire

<p>△ C1 Controller to J Box (81 ft)</p> <table border="1"> <tr> <th>CONDUIT 1</th> <th>CONDUIT 2</th> <th>CONDUIT 3</th> <th>CONDUIT 4</th> </tr> <tr> <td># 0 Bare Copper</td> <td># 0 Bare Copper</td> <td># 0 Bare Copper</td> <td># 0 Bare Copper</td> </tr> </table>	CONDUIT 1	CONDUIT 2	CONDUIT 3	CONDUIT 4	# 0 Bare Copper	# 0 Bare Copper	# 0 Bare Copper	# 0 Bare Copper	<p>△ C2 Controller to sub out (5 ft)</p> <table border="1"> <tr> <th>CONDUIT 1</th> </tr> <tr> <td># 0 Bare Copper</td> </tr> </table>	CONDUIT 1	# 0 Bare Copper
CONDUIT 1	CONDUIT 2	CONDUIT 3	CONDUIT 4								
# 0 Bare Copper	# 0 Bare Copper	# 0 Bare Copper	# 0 Bare Copper								
CONDUIT 1											
# 0 Bare Copper											
<p>△ A PSF to J Box (25 ft)</p> <table border="1"> <tr> <th>CONDUIT 1</th> </tr> <tr> <td># 0 Bare Copper</td> </tr> </table>	CONDUIT 1	# 0 Bare Copper	<p>△ A PSF to controller (25 ft)</p> <table border="1"> <tr> <th>CONDUIT 1</th> </tr> <tr> <td># 0 Bare Copper</td> </tr> </table>	CONDUIT 1	# 0 Bare Copper						
CONDUIT 1											
# 0 Bare Copper											
CONDUIT 1											
# 0 Bare Copper											
<p>△ 1 J Box to SM Pole (75 ft)</p> <table border="1"> <tr> <th>CONDUIT 1</th> <th>CONDUIT 2</th> </tr> <tr> <td># 0 Bare Copper 200' WALK CABLE</td> <td># 0 Bare Copper</td> </tr> </table>	CONDUIT 1	CONDUIT 2	# 0 Bare Copper 200' WALK CABLE	# 0 Bare Copper	<p>△ 2 J Box to A Pole (15 ft)</p> <table border="1"> <tr> <th>CONDUIT 1</th> <th>CONDUIT 2</th> </tr> <tr> <td># 0 Bare Copper 200' WALK CABLE</td> <td># 0 Bare Copper</td> </tr> </table>	CONDUIT 1	CONDUIT 2	# 0 Bare Copper 200' WALK CABLE	# 0 Bare Copper		
CONDUIT 1	CONDUIT 2										
# 0 Bare Copper 200' WALK CABLE	# 0 Bare Copper										
CONDUIT 1	CONDUIT 2										
# 0 Bare Copper 200' WALK CABLE	# 0 Bare Copper										
<p>△ 4 J Box to SM Pole (75 ft)</p> <table border="1"> <tr> <th>CONDUIT 1</th> <th>CONDUIT 2</th> </tr> <tr> <td># 0 Bare Copper 200' WALK CABLE</td> <td># 0 Bare Copper</td> </tr> </table>	CONDUIT 1	CONDUIT 2	# 0 Bare Copper 200' WALK CABLE	# 0 Bare Copper	<p>△ 5 J Box to J Box (70 ft)</p> <table border="1"> <tr> <th>CONDUIT 1</th> <th>CONDUIT 2</th> </tr> <tr> <td># 0 Bare Copper 200' WALK CABLE</td> <td># 0 Bare Copper</td> </tr> </table>	CONDUIT 1	CONDUIT 2	# 0 Bare Copper 200' WALK CABLE	# 0 Bare Copper		
CONDUIT 1	CONDUIT 2										
# 0 Bare Copper 200' WALK CABLE	# 0 Bare Copper										
CONDUIT 1	CONDUIT 2										
# 0 Bare Copper 200' WALK CABLE	# 0 Bare Copper										
<p>△ 7 J Box to J Box (75 ft)</p> <table border="1"> <tr> <th>CONDUIT 1</th> <th>CONDUIT 2</th> </tr> <tr> <td># 0 Bare Copper 200' WALK CABLE</td> <td># 0 Bare Copper</td> </tr> </table>	CONDUIT 1	CONDUIT 2	# 0 Bare Copper 200' WALK CABLE	# 0 Bare Copper	<p>△ 8 J Box to SM Pole (15 ft)</p> <table border="1"> <tr> <th>CONDUIT 1</th> <th>CONDUIT 2</th> </tr> <tr> <td># 0 Bare Copper 200' WALK CABLE</td> <td># 0 Bare Copper</td> </tr> </table>	CONDUIT 1	CONDUIT 2	# 0 Bare Copper 200' WALK CABLE	# 0 Bare Copper		
CONDUIT 1	CONDUIT 2										
# 0 Bare Copper 200' WALK CABLE	# 0 Bare Copper										
CONDUIT 1	CONDUIT 2										
# 0 Bare Copper 200' WALK CABLE	# 0 Bare Copper										
	<p>△ 9 J Box to J Box (75 ft)</p> <table border="1"> <tr> <th>CONDUIT 1</th> <th>CONDUIT 2</th> </tr> <tr> <td># 0 Bare Copper 200' WALK CABLE</td> <td># 0 Bare Copper</td> </tr> </table>	CONDUIT 1	CONDUIT 2	# 0 Bare Copper 200' WALK CABLE	# 0 Bare Copper						
CONDUIT 1	CONDUIT 2										
# 0 Bare Copper 200' WALK CABLE	# 0 Bare Copper										



TRAFFIC SIGNAL PLAN

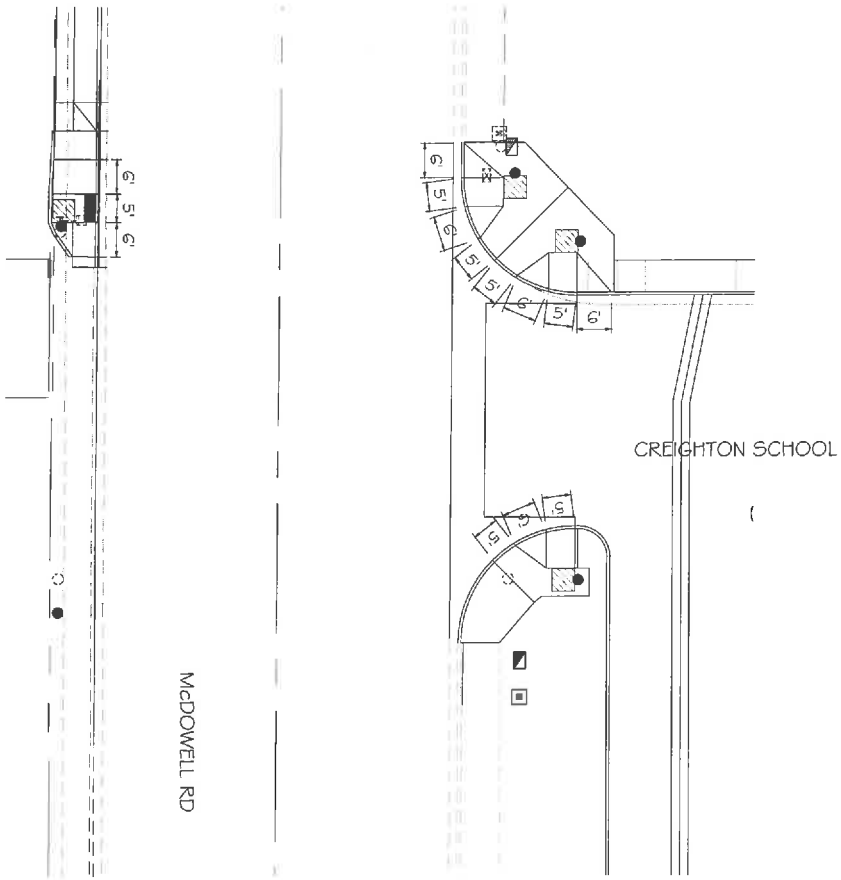
CITY OF PHOENIX, ARIZONA
 STREET TRANSPORTATION DEPARTMENT

MDOWELL RD & CREIGHTON SCHOOL
 WIRING

DATE: 11/24/2017
 SCALE: 1" = 20'

DATE	BY	CHKD	APP'D
11/24/2017	JW	JW	JW

TRAFFIC SIGNAL PLAN
 MDOWELL RD & CREIGHTON SCHOOL
 WIRING



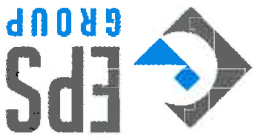
WRIGHT
 ENGINEERING AND DESIGN
 105 EAST OULTON DR • CHANDLER, AZ 85226
 PHONE: 480.427.1589
 FAX: 480.427.1590
 www.wrighteng.com
 WRIGHT PROJECT # 15003

TITLE: **TRAFFIC SIGNAL PLANS**
 PROJECT: **MADWELL RD & CREIGHTON SCHOOL RAMP5**
 CITY OF PHOENIX, ARIZONA
 STREET TRANSFORMATION DEPARTMENT

PREPARED BY: [Name]
 CHECKED BY: [Name]
 DATE: [Date]

SCALE: 1" = 20'
 SHEET NO. 4 OF 4





**Legal Description
Traffic Control Easement**

Job No. 17-410

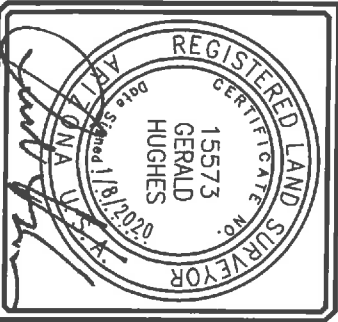
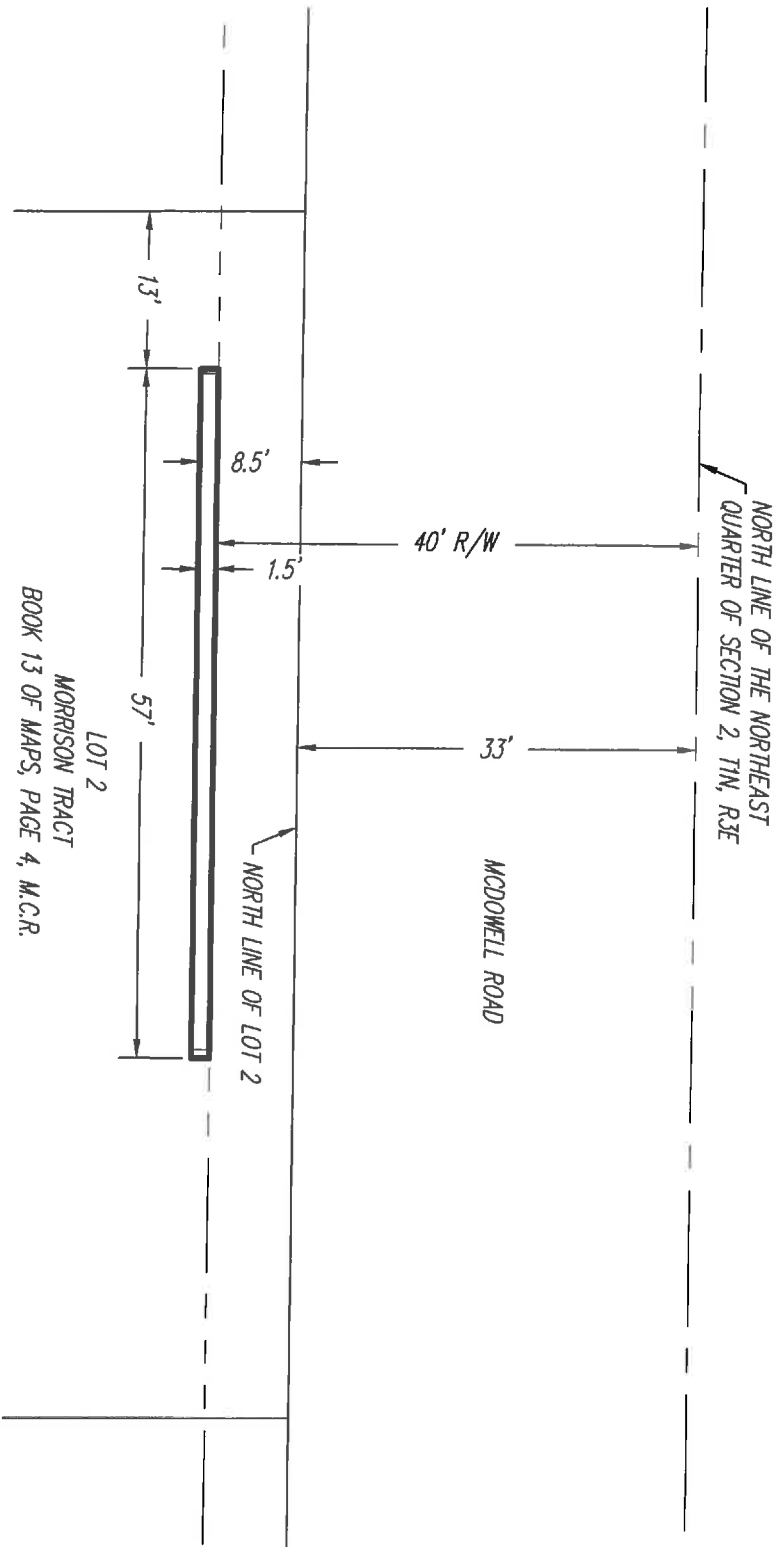
December 31, 2019

A portion of Lot 2, Morrison Tract, Book 13 of Maps, Page 4, Official Records of Maricopa County, Arizona, located in the Northeast Quarter of Section 2, Township 1 North, Range 3 East, of the Gila and Salt River Meridian, Maricopa County, Arizona, and more particularly described as follows:

The east 57.00 feet of the west 70.00 feet of the south 1.50 feet of the north 8.50' feet of said Lot 2.

Containing an area of 86 square feet or 0.0020 acres, more or less.





17-410

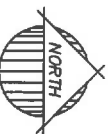
Traffic Control Easement

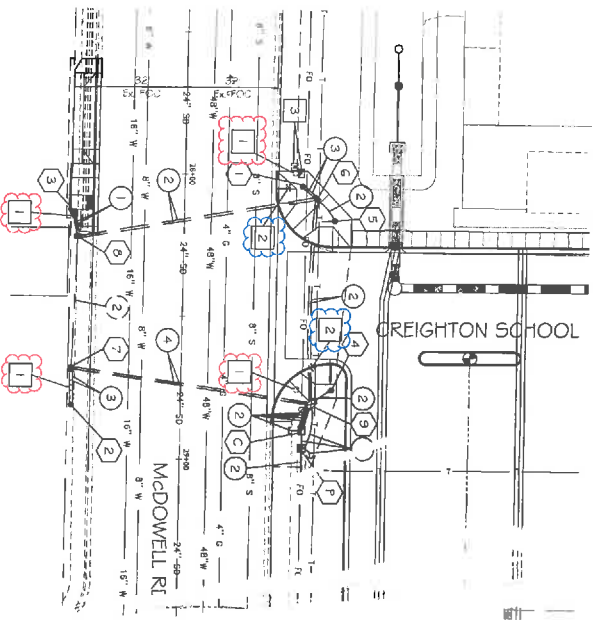
EXHIBIT



1130 N. Alma School Rd.
 Ste. 120 Mesa, AZ 85201
 T: 480.503.2250 | F: 480.503.2258
 www.epsgroupinc.com

N.T.S.





- Keynote 1
- (4) removal of traffic signal foundation
- Keynote 2
- (2) removal of Junction Box

1. GENERAL NOTES:

- 1.1 The contractor shall notify the City Of Phoenix Traffic Signal Shop (COTSS) 5625 6733 a minimum of fourteen (14) calendar days prior to beginning any traffic signal work. Submittals of all equipment shall be furnished to the Traffic Signal Shop for review and approval. All traffic signal equipment submittals shall include a detailed description of the equipment. The contractor shall verify that they have the most current set of drawings prior to start and ordering of any equipment.
- 1.2 Foundation elevations must be within 1/4" of finished sidewalk grade.
- 1.3 The Contractor shall layout all ADA strips, junction boxes and foundation boxes for approval by the traffic signal representative. All ADA strips shall be laid out in a single meeting point to determine best traffic signal locations. A minimum of four (4) feet of clearance is required between all traffic signal poles and the back edge of sidewalk pedestrian ramps.
- 1.4 Traffic Signal Plan approval is valid for 365 calendar days from date signed. If signal construction has not begun prior to the 365 days expiring, the Contractor must be re-submitted for approval for an extension granted by the City of Phoenix. Do not be construed as an extension granted by the City of Phoenix. Existing traffic signal equipment locations and foundation details references are current.
- 2 The contractor shall have a competent supervisor capable of reading and thoroughly understanding the plans and specifications and thoroughly experienced in the construction of traffic signals assigned to the project. The signal shop representative shall provide a general individual municipal be on site during any traffic signal construction or repairs. The Contractor shall have a complete set of construction drawings including current City of Phoenix system communication. Signal Details on site at all times during signal lighting system communication.
- 3 WORK TO BE PERFORMED BY THE CONTRACTOR:
 - 3.1 All installation work, unless otherwise noted.
 - All trenching
 - All foundation (foot, cantilever and power) where indicated by the contractor, size and bolts required for pole foundations included. All junction boxes with 15' of ramps specified in note 2.1
 - All conduit runs
 - Provide and install conduct from from 50' to Utility Company feed
 - 3.2 All underground conduits shall be schedule 40 rigid polyvinyl chloride (PVC) loop bent in conduits which shall be below proposed grade with the exception of accordance with the latest City of Phoenix Standard Detail Sheet. All conduits shall be installed in straight lines (unless approved by the Signal Shop representative) and shall be supported by approved equipment foundations with one 3/8" diameter box or junction box to signal equipment foundations. All conduits shall be supported by approved equipment foundations. All conduits entering junction boxes shall be vertical. Conduits in all foundations shall be located as close as possible to center of the conduit. Conduit shall be supported by approved equipment foundations. All conduit ends except those in the conduit cabinet shall be provided with a "bell end" fitting of appropriate size.
 - 3.3 Removal of existing signal pits.
4. WORK TO BE PERFORMED BY CITY OF PHOENIX SIGNAL CREWS:

The City of Phoenix traffic signal crews will provide and install all above ground traffic signal equipment including:

 - All poles and mast arms
 - All signal heads
 - All pole brackets
 - All 17.5 push buttons
 - All controllers
 - All illuminated street signs
 - All signal wiring
 - All loop and non-invasive detectors
 - All cameras
 - All radios



M. WRIGHT
 LICENSED PROFESSIONAL ENGINEER
 LICENSE NO. 14878
 STATE OF ARIZONA
 14878 CREIGHTON SCHOOL, PHOENIX, AZ 85034

PROPOSED FOUNDATION SCHEDULE

NO.	TYPE	LOCATION	COORDINATES
1	40 PVC	37410 N CREIGHTON SCHOOL	48 0 11
2	40 PVC	37410 N CREIGHTON SCHOOL	48 0 11
3	40 PVC	37410 N CREIGHTON SCHOOL	48 0 11
4	40 PVC	37410 N CREIGHTON SCHOOL	48 0 11
5	40 PVC	37410 N CREIGHTON SCHOOL	48 0 11

PROPOSED JUNCTION BOX SCHEDULE

NO.	TYPE	LOCATION	COORDINATES
1	40 PVC	37410 N CREIGHTON SCHOOL	48 0 11
2	40 PVC	37410 N CREIGHTON SCHOOL	48 0 11
3	40 PVC	37410 N CREIGHTON SCHOOL	48 0 11
4	40 PVC	37410 N CREIGHTON SCHOOL	48 0 11
5	40 PVC	37410 N CREIGHTON SCHOOL	48 0 11

REMOVE

- 1 thru 5 See Foundation Schedule
- 1 thru 3 See Junction Box Schedule
- 1 2" Schedule 40 PVC with #10 copper pull wire bent over lip of stopbox
- 2 2 1/2" Schedule 40 PVC with detectable mule tape
- 3 2" Schedule 40 PVC with #10 copper pull wire bent over lip of stopbox
- 4 2 1/2" Schedule 40 PVC with detectable mule tape - By Others

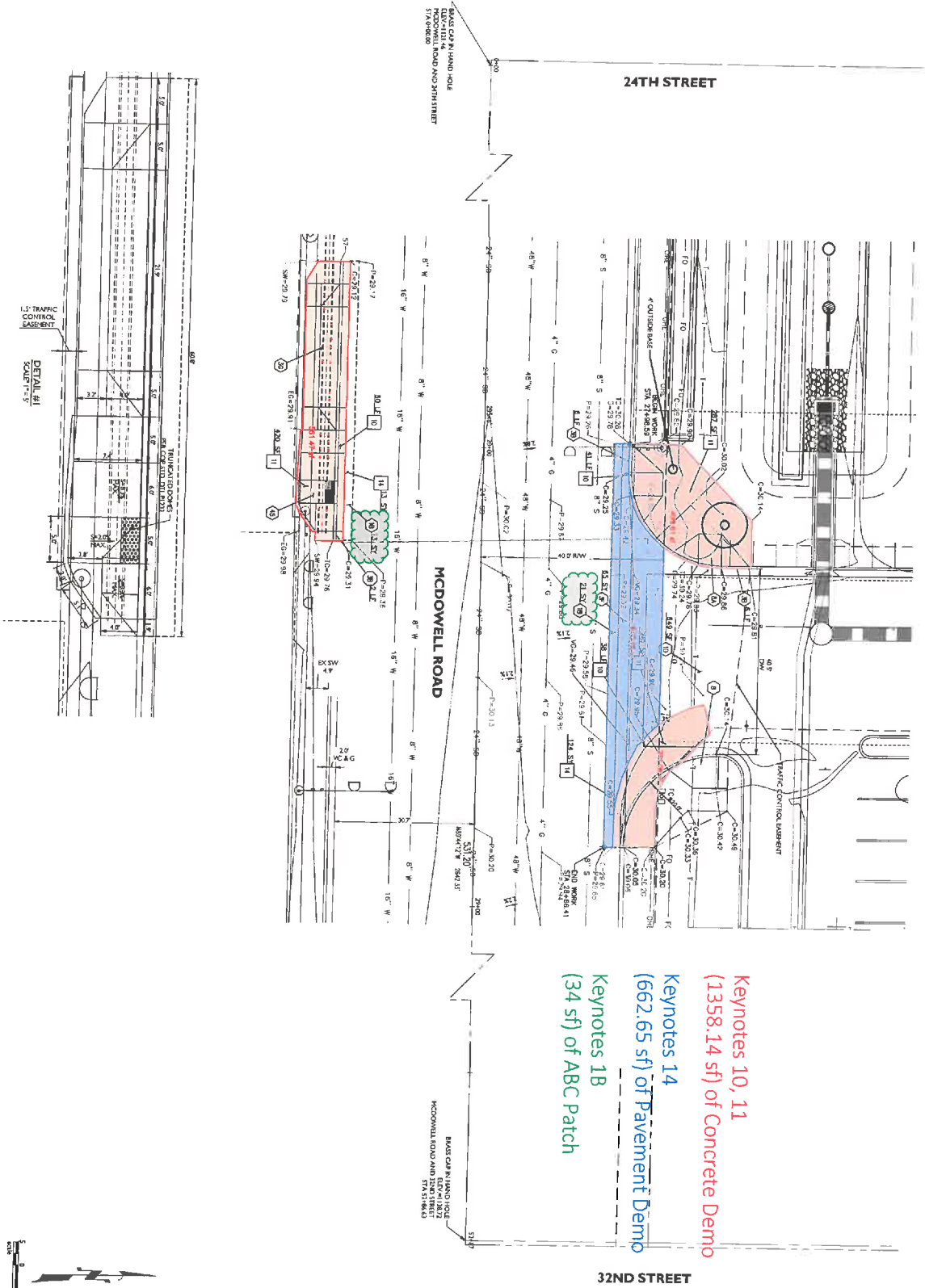
TRAFFIC SIGNAL PLANS
 CITY OF PHOENIX, ARIZONA
 STREET REFORMULATION DEPARTMENT
 McDowell Rd & Creighton School
 FOUNDATION

DATE: 11-20-20
 SHEET NO: 52-135
 OF 135

17-410 Creighton Elementary School

Jan 07, 2020 9:20am S:\Projects\2017\17-410\Civil\Construction\DI1-Site Plans\17-410 - PVD1.dwg

Concrete/Pavement Demo



- ADDITIONAL NOTES**
- 10 SAW CUT AND REMOVE EXISTING CURB AND GUTTER
 - 11 SAW CUT AND REMOVE EXISTING SIDEWALK
 - 14 SAW CUT AND REMOVE EXISTING ASPHALT PAVEMENT TO CLEAN EDGE

- CONSTRUCTION NOTES**
- 18A LF 18" HAVY DUTY PAVEMENT SECTION 4 AC 0/4 6 ABC OR 4 1/2" CONCRETE PAVEMENT SECTION 4 THE "A" POOP OVER COMPACTED SUBGRADE
 - 18B SF 6" VERT. CURB AND GUTTER W/ 20'-1" TYPE "A"
 - 18C SF 6" WALLEY GUTTER AND STD. DTL. 240

- 34 SF TO MATCH SHOWN
- 88B SF 6" VERT. CURB AND GUTTER W/ 20'-1" TYPE "A"
- 12 LF 6" WALLEY GUTTER AND STD. DTL. 240
- 18A SF 6" VERT. CURB AND GUTTER W/ 20'-1" TYPE "A"
- 18B SF 6" WALLEY GUTTER AND STD. DTL. 240

1 6A
1 6A
1 6A
1 6A

**Keynotes 10, 11
(1358.14 sf) of Concrete Demo**

**Keynotes 14
(662.65 sf) of Pavement Demo**

**Keynotes 18
(34 sf) of ABC Patch**



CREIGHTON ELEMENTARY SCHOOL
REPLACEMENT PROJECT
2802 E. MCDOWELL RD
PHOENIX, AZ



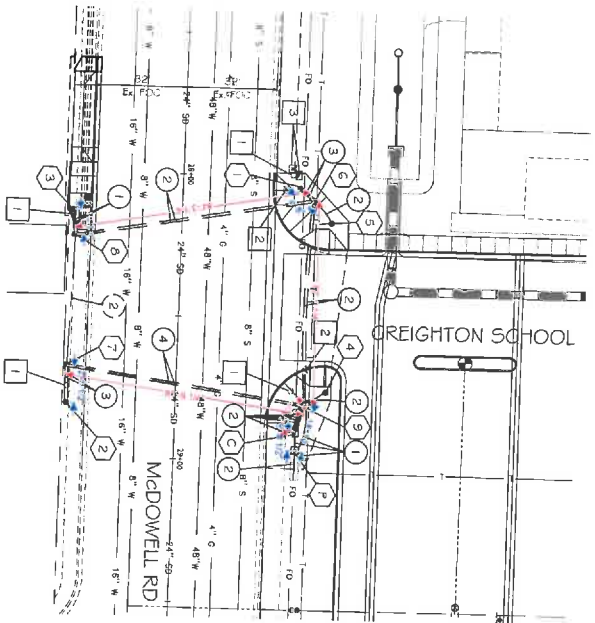
DATE: 01/07/20
JOB NO: 17-410
SHEET: 3 of 3

DESIGNED BY: CAA
REVIEWED BY: JKS
DATE: 01/07/20
JOB NO: 17-410
SHEET: 3 of 3

PHS
PHOENIX HARBOR SERVICES

CONTRACTOR
CONSTRUCTION

Conduit Takeoff



- Keynote 2, 4
- (522' 9 1/2") of 2 1/2" Schedule 40 PVC with Detectable Mule Tape
- Keynote 1, 3
- (80' 8") of 2" Schedule 40 PVC with Detectable Mule Tape
- (31' 4") of Copper Pull wire

GENERAL NOTES:

1. The contractor shall notify the City of Phoenix Traffic Signal Staff (502-242-6733) a minimum of fourteen (14) calendar days prior to the start of any signal work. Schedules of equipment shall be furnished to the City of Phoenix Traffic Signal Staff for review and approval. The contractor shall notify the City of Phoenix Traffic Signal Staff of any equipment to start and ordering of any equipment.
2. Foundation elevations must be within 1/4" of finished subgrade.
3. The Contractor shall provide all ADA ramps, junction boxes, etc. for all signal equipment. Schedules of equipment shall be furnished to the City of Phoenix Traffic Signal Staff for review and approval. All ADA ramps shall be on a grade matching paint to determine level traffic signal pole placement and the back edge of detectable pedestrian ramps.
4. Traffic Signal Plan approval is valid for 365 calendar days from date of approval. If signal construction has not begun prior to the 365 day expiration, the City of Phoenix Traffic Signal Staff shall be notified in writing to extend the approval. If the contractor requires an extension or a modification, the contractor shall provide a complete set of construction drawings, including current traffic signal equipment, foundation and standard systems construction.
5. The contractor shall have a competent sign shop capable of road sign fabrication. All signs shall be fabricated in accordance with the current edition of the Manual of Uniform Traffic Control Devices, 4th Edition, published by the Federal Highway Administration, or as otherwise indicated on the drawings. All signs shall be fabricated by a sign shop that is licensed by the City of Phoenix, Type 3AM. Foundations to be installed by others.
6. The contractor shall provide and install one (1) City of Phoenix Type 3M Foundation, one (1) City of Phoenix Type 3M Foundation, one (1) City of Phoenix Type 3M Foundation, one (1) City of Phoenix Type 3M Foundation, one (1) City of Phoenix Type 3M Foundation to be installed by others.

CONTRACTOR NOTE FOR CITY OF PHOENIX TRAFFIC SIGNAL NOTES

- 2.1 The contractor shall provide and install one (1) City of Phoenix Type 3M Foundation, one (1) City of Phoenix Type 3M Foundation, one (1) City of Phoenix Type 3M Foundation, one (1) City of Phoenix Type 3M Foundation, one (1) City of Phoenix Type 3M Foundation to be installed by others.
3. WORK TO BE PERFORMED BY THE CONTRACTOR:
 - 3.1 The contractor shall provide the traffic signal equipment as indicated on note 2.1. The contractor is to provide all underground work including, but not limited to:
 - All trenching
 - All foundations (pole, controller and power service pedestal)
 - All cable trays, rods, nuts and bolts required for pole foundations, installed by others.
 - All junction boxes with 120' of supply
 - All conduit runs
 - All cable runs
 - Provide and install traffic signal sign from Type to Daily Company Field
 - 3.2 All underground conduits shall be schedule 40 rigid polyvinyl chloride (PVC) loop lead in conduit. All conduits shall be installed below finished grade with the exception of conduits that are installed in a trench. All conduits shall be installed in accordance with the latest City of Phoenix Standard and Specifications for Signal Equipment. Foundations for signal equipment shall be installed in accordance with the latest City of Phoenix Standard and Specifications for Signal Equipment. Foundations for signal equipment shall be installed in accordance with the latest City of Phoenix Standard and Specifications for Signal Equipment. Foundations for signal equipment shall be installed in accordance with the latest City of Phoenix Standard and Specifications for Signal Equipment.
 - 3.3 Removal of existing streetlights.

TRAFFIC SIGNAL EQUIPMENT TO BE REMOVED:

- All poles and mast arms
- All signal heads
- All signal brackets
- All APD mast sections
- All controllers
- All LED headlamps
- All LED headlamps
- All signal wiring
- All loop and non-invasive detectors
- All camera
- All cables

WORK TO BE PERFORMED BY CITY OF PHOENIX SIGNAL CREWS

The City of Phoenix Traffic Signal Crews will provide and install all above ground trench signal equipment including:

- All poles and mast arms
- All signal heads
- All signal brackets
- All APD mast sections
- All controllers
- All LED headlamps
- All LED headlamps
- All signal wiring
- All loop and non-invasive detectors
- All camera
- All cables

N. WRIGHT
Engineering Corporation
1481 EAST CHILTON DR
PHOENIX, AZ 85026

PROJECT NO. 19-001
DATE: 08/19/2019
SCALE: AS SHOWN
DRAWN BY: J. B. [unreadable]
CHECKED BY: J. B. [unreadable]
DATE: 08/19/2019

PROPOSED FOUNDATION SCHEDULE

NO.	TYPE	DESCRIPTION	QUANTITY	UNIT	NOTE
1	TRAF	TRAFFIC SIGNAL FOUNDATION	4	EA	SEE FOUNDATION SCHEDULE
2	JUN	JUNCTION BOX	2	EA	SEE FOUNDATION SCHEDULE
3	FCM	FOOT COUNTER MOUNTED EQUIPMENT	2	EA	SEE FOUNDATION SCHEDULE

PROPOSED JUNCTION BOX SCHEDULE

NO.	TYPE	DESCRIPTION	QUANTITY	UNIT	NOTE
1	JUN	JUNCTION BOX	2	EA	SEE FOUNDATION SCHEDULE
2	JUN	JUNCTION BOX	2	EA	SEE FOUNDATION SCHEDULE

- INSTALL**
1. See Foundation Schedule
 2. See Junction Box Schedule
 3. See Junction Box Schedule
 4. See Junction Box Schedule
 5. See Junction Box Schedule
 6. See Junction Box Schedule
 7. See Junction Box Schedule
 8. See Junction Box Schedule
 9. See Junction Box Schedule
 10. See Junction Box Schedule
 11. See Junction Box Schedule
 12. See Junction Box Schedule
 13. See Junction Box Schedule
 14. See Junction Box Schedule
 15. See Junction Box Schedule
 16. See Junction Box Schedule
 17. See Junction Box Schedule
 18. See Junction Box Schedule
 19. See Junction Box Schedule
 20. See Junction Box Schedule
 21. See Junction Box Schedule
 22. See Junction Box Schedule
 23. See Junction Box Schedule
 24. See Junction Box Schedule
 25. See Junction Box Schedule
 26. See Junction Box Schedule
 27. See Junction Box Schedule
 28. See Junction Box Schedule
 29. See Junction Box Schedule
 30. See Junction Box Schedule
 31. See Junction Box Schedule
 32. See Junction Box Schedule
 33. See Junction Box Schedule
 34. See Junction Box Schedule
 35. See Junction Box Schedule
 36. See Junction Box Schedule
 37. See Junction Box Schedule
 38. See Junction Box Schedule
 39. See Junction Box Schedule
 40. See Junction Box Schedule
 41. See Junction Box Schedule
 42. See Junction Box Schedule
 43. See Junction Box Schedule
 44. See Junction Box Schedule
 45. See Junction Box Schedule
 46. See Junction Box Schedule
 47. See Junction Box Schedule
 48. See Junction Box Schedule
 49. See Junction Box Schedule
 50. See Junction Box Schedule
 51. See Junction Box Schedule
 52. See Junction Box Schedule
 53. See Junction Box Schedule
 54. See Junction Box Schedule
 55. See Junction Box Schedule
 56. See Junction Box Schedule
 57. See Junction Box Schedule
 58. See Junction Box Schedule
 59. See Junction Box Schedule
 60. See Junction Box Schedule
 61. See Junction Box Schedule
 62. See Junction Box Schedule
 63. See Junction Box Schedule
 64. See Junction Box Schedule
 65. See Junction Box Schedule
 66. See Junction Box Schedule
 67. See Junction Box Schedule
 68. See Junction Box Schedule
 69. See Junction Box Schedule
 70. See Junction Box Schedule
 71. See Junction Box Schedule
 72. See Junction Box Schedule
 73. See Junction Box Schedule
 74. See Junction Box Schedule
 75. See Junction Box Schedule
 76. See Junction Box Schedule
 77. See Junction Box Schedule
 78. See Junction Box Schedule
 79. See Junction Box Schedule
 80. See Junction Box Schedule
 81. See Junction Box Schedule
 82. See Junction Box Schedule
 83. See Junction Box Schedule
 84. See Junction Box Schedule
 85. See Junction Box Schedule
 86. See Junction Box Schedule
 87. See Junction Box Schedule
 88. See Junction Box Schedule
 89. See Junction Box Schedule
 90. See Junction Box Schedule
 91. See Junction Box Schedule
 92. See Junction Box Schedule
 93. See Junction Box Schedule
 94. See Junction Box Schedule
 95. See Junction Box Schedule
 96. See Junction Box Schedule
 97. See Junction Box Schedule
 98. See Junction Box Schedule
 99. See Junction Box Schedule
 100. See Junction Box Schedule

- REMOVE**
1. Traffic Signal Foundation - 4
 2. Junction Box - 2
 3. Pole-Mounted Equipment - 2

TRAFFIC SIGNAL PLANS

CITY OF PHOENIX, ARIZONA
STREET RECONSTRUCTION DEPARTMENT
MCDOWELL RD & CREIGHTON SCHOOL
FOUNDATION

DATE: 08/19/2019
SCALE: 1" = 20'