

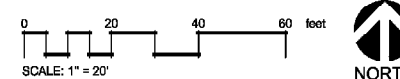
HARDSCAPE KEYNOTES

- 1 EXISTING SIDEWALK TO REMAIN
- 2 EXISTING PARKING TO REMAIN
- 3 EXISTING FENCE TO REMAIN
- 4 EXISTING GATE TO REMAIN
- 5 EXISTING SOLAR STRUCTURE TO REMAIN
- 6 EXISTING BUILDING TO REMAIN
- 7 EXISTING WELL TANK
- 8 EXISTING AMPHITHEATER
- 1 SIDEWALK TYPE 1 - SEE DETAIL SHEETS
- 2 SIDEWALK TYPE 2 - SEE DETAIL SHEETS
- 3 FIRE LANE
- 4 CONCRETE HEADER - SEE DETAIL SHEETS
- 5 SOCCER FIELD
- 6 BASEBALL FIELD
- 7 BASEBALL BACKSTOP - SEE DETAIL SHEETS
- 8 SEAT WALL - SEE DETAIL SHEETS
- 9 PLAYGROUND STRUCTURE (KINDERGARTEN)
- 10 PLAY GROUND STRUCTURE (GRADES 1-6)
- 11 SWINGS
- 12 STUDENT GARDEN - RAISED PLANTING BEDS
- 13 GRASSY KNOLL
- 14 TUBE STEEL FENCE - SEE DETAIL SHEETS
- 14A 3-FOOT HIGH TUBE STEEL FENCE - SEE DETAIL SHEETS
- 15 CHAIN LINK FENCE - SEE DETAIL SHEETS
- 16 MAN GATE - SEE GATE SCHEDULE ON DETAIL SHEETS
- 17 VEHICULAR GATE - SEE GATE SCHEDULE ON DETAIL SHEETS
- 18 PROPOSED BUILDING (SEE ARCH. PLANS)
- 19 PROPOSED STABILIZED DECOMPOSED GRANITE SUNKEN GARDEN CLASSROOM WITH MOVEABLE SEATING

18 - ASPHALT 3/6 FIRELANE - 18,616 SF
 21 - CONCRETE CURB FIRE LANE - 1,085 LF

HARDSCAPE LEGEND

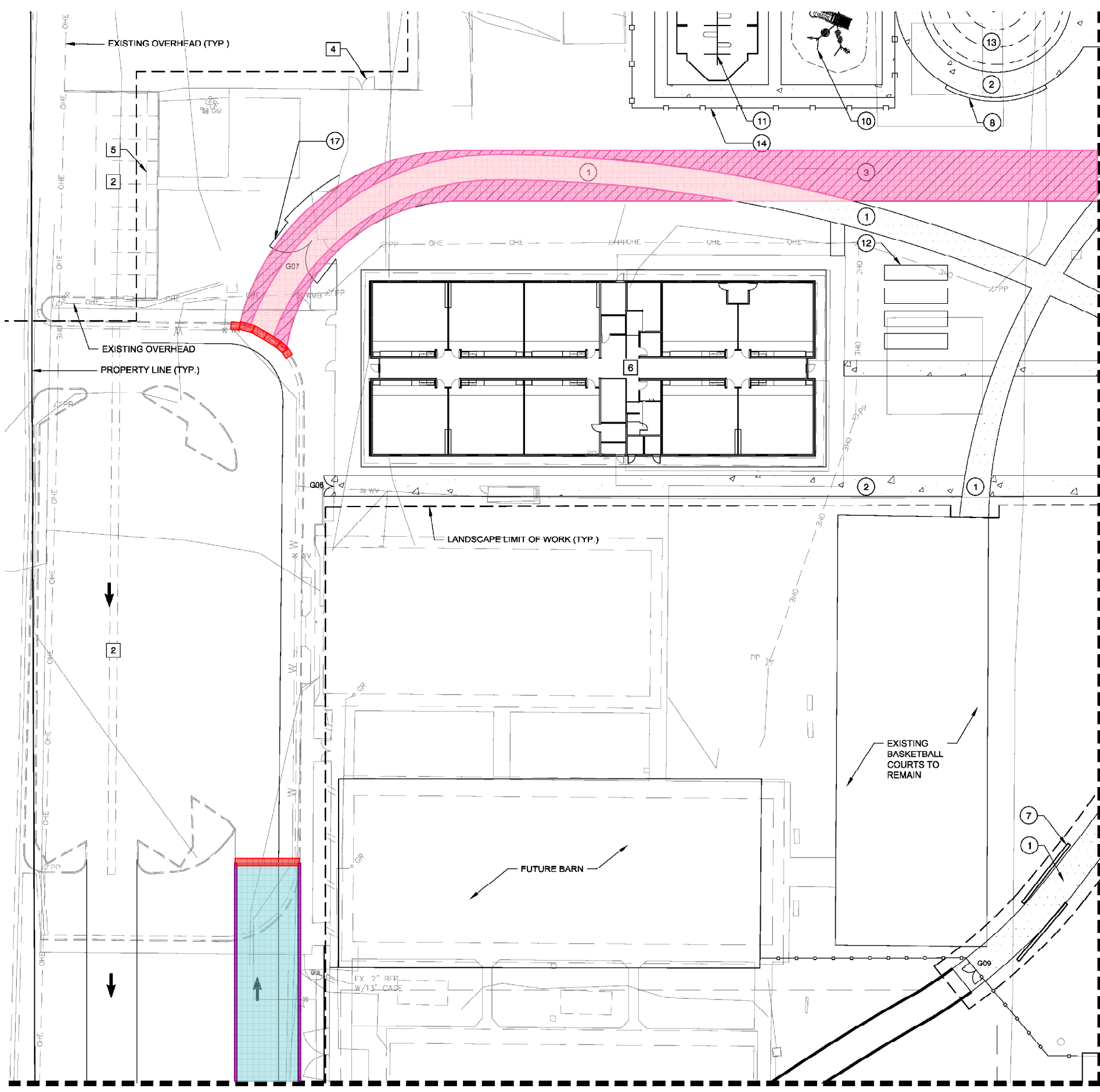
QTY	DESCRIPTION
18,070 SF	ARROYO SIDEWALK
14,795 SF	FIRE LANE
24,095 SF	PLAZA / MAIN SIDEWALK



BIM 360://30-19187-00 Liberty Elementary Office Building/30-19187-00_ARCH/GNACB_2018.rvt
 10/21/2019 10:45:39 AM

NOTE TO CONTRACTOR:
 LOGAN SIMPSON DESIGN INC. HAS ENDEAVORED TO PROVIDE ACCURATE UTILITY INFORMATION BASED ON THE MOST CURRENT DATA AVAILABLE. THE CONTRACTOR SHALL FIELD VERIFY THE LOCATION OF UNDERGROUND UTILITIES SHOWN OR NOT SHOWN ON THESE PLANS WITH RESPECT TO LINE AND GRADE PRIOR TO CONSTRUCTION. USE OF THE INFORMATION CONTAINED IN THIS INSTRUMENT FOR OTHER THAN THE SPECIFIC PURPOSE FOR WHICH IT WAS INTENDED AND FOR OTHER THAN THE CLIENT FOR WHOM IT WAS PREPARED IS FORBIDDEN UNLESS EXPRESSLY PERMITTED IN WRITING IN ADVANCE TO LOGAN SIMPSON DESIGN INC. AND LOGAN SIMPSON DESIGN INC. SHALL HAVE NO LIABILITY TO ANY USER OF THIS INFORMATION WITHOUT THEIR WRITTEN CONSENT.



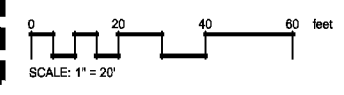


HARDSCAPE KEYNOTES

- 1 EXISTING SIDEWALK TO REMAIN
- 2 EXISTING PARKING TO REMAIN
- 3 EXISTING FENCE TO REMAIN
- 4 EXISTING GATE TO REMAIN
- 5 EXISTING SOLAR STRUCTURE TO REMAIN
- 6 EXISTING BUILDING TO REMAIN
- 7 EXISTING WELL TANK
- 8 EXISTING AMPHITHEATER
- 1 SIDEWALK TYPE 1 - SEE DETAIL SHEETS
- 2 SIDEWALK TYPE 2 - SEE DETAIL SHEETS
- 3 FIRE LANE
- 4 CONCRETE HEADER - SEE DETAIL SHEETS
- 5 SOCCER FIELD
- 6 BASEBALL FIELD
- 7 BASEBALL BACKSTOP - SEE DETAIL SHEETS
- 8 SEAT WALL - SEE DETAIL SHEETS
- 9 PLAYG
- 10 PLAY G
- 11 SWINGS
- 12 STUDEN
- 13 GRASSY
- 14 TUBE STEEL FENCE - SEE DETAIL SHEETS
- 14A 3-FOOT HIGH TUBE STEEL FENCE - SEE DETAIL SHEETS
- 15 CHAIN LINK FENCE - SEE DETAIL SHEETS
- 16 MAN GATE - SEE GATE SCHEDULE ON DETAIL SHEETS
- 17 VEHICULAR GATE - SEE GATE SCHEDULE ON DETAIL SHEETS
- 18 PROPOSED BUILDING (SEE ARCH. PLANS)
- 19 PROPOSED STABILIZED DECOMPOSED GRANITE SUNKEN GARDEN CLASSROOM WITH MOVEABLE SEATING

HARDSCAPE LEGEND

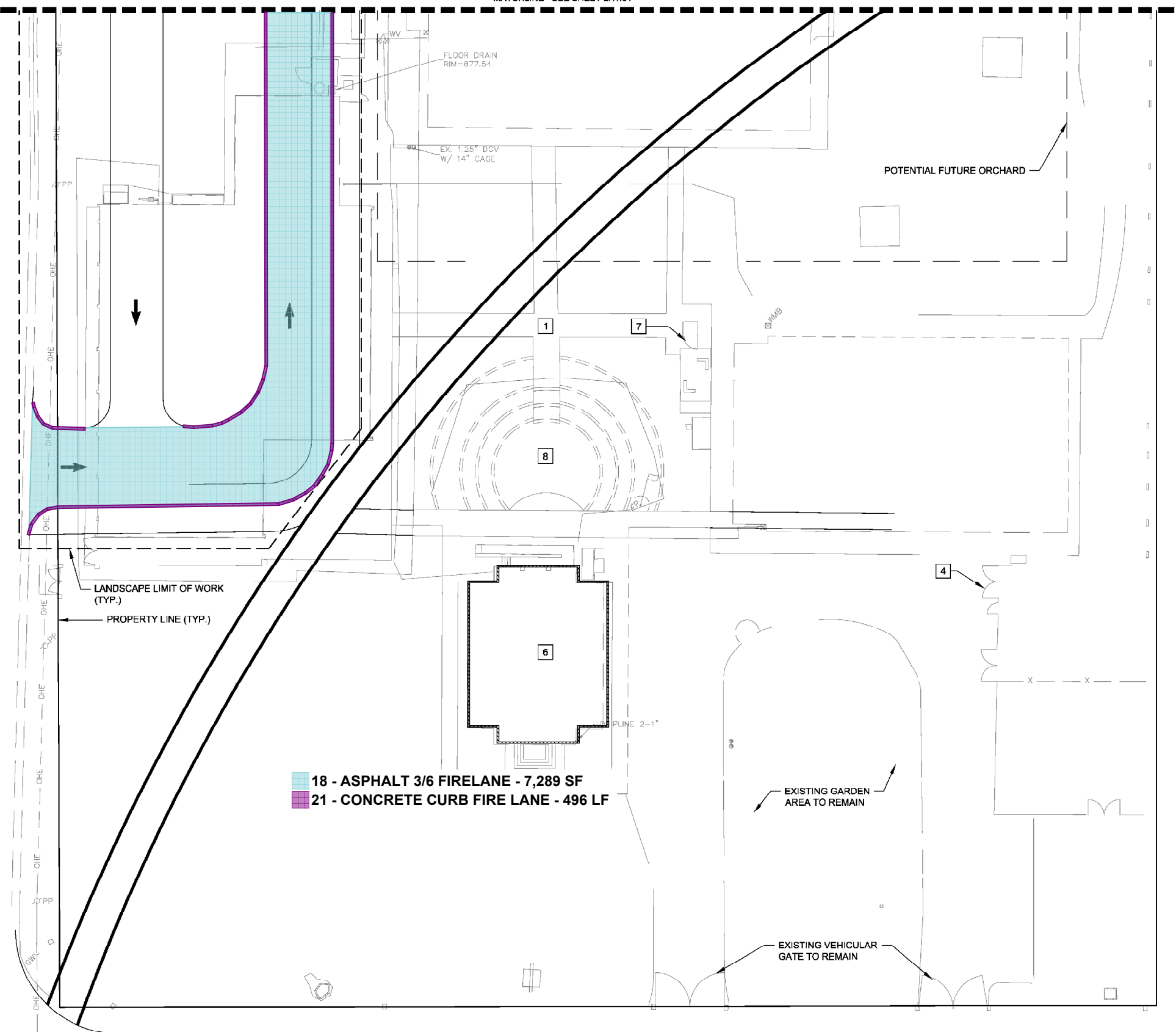
QTY	DESCRIPTION
18,070 SF	ARROYO SIDEWALK
14,795 SF	FIRE LANE
24,095 SF	PLAZA / MAIN SIDEWALK



N:\projects\2019\19187-00 Gilbert Medical Office Building\33-19187-00_AR_GNACB_2018.rvt
10/21/2019 10:45:39 AM



MATCHLINE - SEE SHEET LH1.04



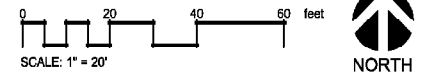
18 - ASPHALT 3/6 FIRELANE - 7,289 SF
 21 - CONCRETE CURB FIRE LANE - 496 LF

HARDSCAPE KEYNOTES

- 1 EXISTING SIDEWALK TO REMAIN
- 2 EXISTING PARKING TO REMAIN
- 3 EXISTING FENCE TO REMAIN
- 4 EXISTING GATE TO REMAIN
- 5 EXISTING SOLAR STRUCTURE TO REMAIN
- 6 EXISTING BUILDING TO REMAIN
- 7 EXISTING WELL TANK
- 8 EXISTING AMPHITHEATER
- 1 SIDEWALK TYPE 1 - SEE DETAIL SHEETS
- 2 SIDEWALK TYPE 2 - SEE DETAIL SHEETS
- 3 FIRE LANE
- 4 CONCRETE HEADER - SEE DETAIL SHEETS
- 5 SOCCER FIELD
- 6 BASEBALL FIELD
- 7 BASEBALL BACKSTOP - SEE DETAIL SHEETS
- 8 SEAT WALL - SEE DETAIL SHEETS
- 9 PLAYGROUND STRUCTURE (KINDERGARTEN)
- 10 PLAY GROUND STRUCTURE (GRADES 1-6)
- 11 SWINGS
- 12 STUDENT GARDEN - RAISED PLANTING BEDS
- 13 GRASSY KNOLL
- 14 TUBE STEEL FENCE - SEE DETAIL SHEETS
- 14A 3-FOOT HIGH TUBE STEEL FENCE - SEE DETAIL SHEETS
- 15 CHAIN LINK FENCE - SEE DETAIL SHEETS
- 16 MAN GATE - SEE GATE SCHEDULE ON DETAIL SHEETS
- 17 VEHICULAR GATE - SEE GATE SCHEDULE ON DETAIL SHEETS
- 18 PROPOSED BUILDING (SEE ARCH. PLANS)
- 19 PROPOSED STABILIZED DECOMPOSED GRANITE SUNKEN GARDEN CLASSROOM WITH MOVEABLE SEATING

HARDSCAPE LEGEND

QTY	DESCRIPTION
18,070 SF	ARROYO SIDEWALK
14,795 SF	FIRE LANE
24,095 SF	PLAZA / MAIN SIDEWALK



NOT FOR CONSTRUCTION



LIBERTY ELEMENTARY SCHOOL

DESIGN DEVELOPMENT
04/21/2020
Revisions

30-19187-00
HARDSCAPE PLAN

LH1.06

7 OF 23

N:\projects\2019\19187-00 Gilbert Medical Office Building\30-19187-00_AR_GNACB_2018.rvt
10/21/2019 10:45:39 AM

NOTE TO CONTRACTOR: LOGAN SIMPSON DESIGN INC. HAS ENDEAVORED TO PROVIDE ACCURATE UTILITY INFORMATION BASED ON THE MOST CURRENT DATA AVAILABLE. THE CONTRACTOR SHALL FIELD VERIFY THE LOCATION OF UNDERGROUND UTILITIES SHOWN OR NOT SHOWN ON THESE PLANS WITH RESPECT TO LINE AND GRADE PRIOR TO CONSTRUCTION. USE OF THE INFORMATION CONTAINED IN THIS INSTRUMENT FOR OTHER THAN THE SPECIFIC PURPOSE FOR WHICH IT WAS INTENDED AND FOR OTHER THAN THE CLIENT FOR WHOM IT WAS PREPARED IS FORBIDDEN UNLESS EXPRESSLY PERMITTED IN WRITING IN ADVANCE TO LOGAN SIMPSON DESIGN INC. AND LOGAN SIMPSON DESIGN INC. SHALL HAVE NO LIABILITY TO ANY USER OF THIS INFORMATION WITHOUT THEIR WRITTEN CONSENT.