

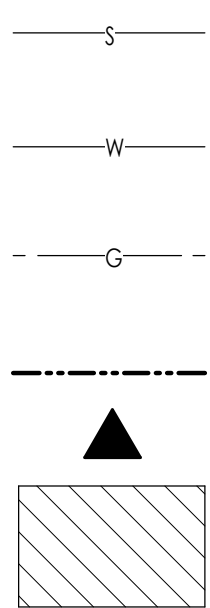
## OVERALL SITE PLAN - NEW

1" = 50'-0"

RFI - 20 - Power Plan and Tree Location

## SITE PLAN LEGEND

NOTE: ALL FIRE LANES SHALL HAVE CITY OF SURPRISE APPROVED FIRE LANE SIGNS AND STRIPED CURBING.



EXISTING SEWER LINE. FIELD VERIFY EXACT LOCATON. COORDINATE WITH CIVIL DRAWINGS  
EXISTING WATER LINE. FIELD VERIFY EXACT LOCATION. COORDINATE WITH CIVIL DRAWINGS  
EXISTING GAS LINE. FIELD VERIFY EXACT LOCATION. COORDINATE WITH CIVIL DRAWINGS  
ACCESSIBLE ROUTE  
30'-0" ACCESS GATE  
FIRE LANE ACCESS ROAD, 20' WIDE MINIMUM LANE, 26' WIDE PATH WHERE SHOWN. PAINT CURBS RED AND PROVIDE FIRE LANE SIGNS PER CITY OF SURPRISE REQUIREMENTS. ALL TURN RADII MEET AASHTO SU-40.

FIRE LANE SIGN  
STOP SIGN  
LOADING SIGN  
FIRE DEPARTMENT CONNECTION (FDC)  
REMOTE FDC  
FIRE HYDRANT  
LIGHT BOLLARD  
SITE LIGHT  
SITE DRAINAGE

### PROJECT NARRATIVE:

**OVERALL CAMPUS:**  
TYPE 'E' EDUCATIONAL OCCUPANCY WITH A PE SPACE AND CAFETERIA, EACH WITH AN 'A-3' NON-SEPARATED OCCUPANCY USE.

**PERMIT 1: SITE AND RENOVATION OF BUILDINGS B, C, D, F, G, H**  
THESE FACILITIES ARE TYPE 'E' EDUCATIONAL OCCUPANCY ONLY. HOHOKAM ELEMENTARY SCHOOL IS A PUBLIC SCHOOL FOR GRADES PRE-K TO 5TH WITH A MAXIMUM ENROLLMENT OF 750 STUDENTS FOR THE ENTIRE SCHOOL. SCHOOLHOUSES **B, C, D,** AND **G** ARE DESIGNED TO AN OCCUPANCY OF **142**. SCHOOLHOUSE **F** IS DESIGNED TO AN OCCUPANCY OF **140**. AND SCHOOLHOUSE **H** IS DESIGNED TO AN OCCUPANCY OF **164** WITH A TOTAL DESIGN OCCUPANCY OF **872**.

RENOVATION OF EXISTING ONE-STORY SCHOOLHOUSE BUILDINGS TO RECONFIGURE CLASSROOMS, RESTROOMS, AND SUPPORT SPACES IN EACH. RENOVATION INCLUDES REPLACED MECHANICAL, ELECTRICAL, AND PLUMBING SYSTEMS AS WELL AS INSTALLING SPRINKLERS IN ALL FACILITIES. ARCHITECTURAL RENOVATIONS INCLUDE REPLACED FINISHES INCLUDING ENVELOPE, INTERIORS, AND ADA CODE UPGRADES THROUGHOUT.

SITE WORK INCLUDES NEW FIRELANE, DROP-OFF LANE, AND PARKING LOT EXPANSION. UTILITIES ARE REPLACED AND UPGRADED THROUGHOUT THE SITE AND A NEW FIRELINE TO BE INSTALLED FOR SPRINKLER SYSTEMS. STORMWATER RETENTION PONDS, NEW LANDSCAPING, PRESERVED AND NEW TREES, AND RESURFACED FIELDS.

**PERMIT 2: NEW CONSTRUCTION OF BUILDING A, J, AND K**  
THESE FACILITIES ARE A TYPE 'E' EDUCATIONAL OCCUPANCY WITH AN 'A-3' OCCUPANCY USAGE IN CAFETERIA AND PE SPACES.

## PROJECT DESCRIPTION

### GENERAL:

PROJECT NAME: HOHOKAM ELEMENTARY SCHOOL  
PROJECT ADDRESS: 8451 E. OAK STREET  
SCOTTSDALE, AZ 85257  
OWNER/APPLICANT: SCOTTSDALE UNIFIED SCHOOL DISTRICT  
LEGAL DESCRIPTION:  
**A.P.N. 131-45-098A**  
THE NORTH HALF OF THE NORTHWEST QUARTER OF THE SOUTHEAST QUARTER OF SECTION 36, TOWNSHIP 2 NORTH, RANGE 4 EAST OF THE GILA AND SALT RIVER BASE & MERIDIAN, MARICOPA COUNTY, ARIZONA;

EXCEPT THAT PART DESCRIBED AS FOLLOWS:

BEGINNING AT THE CENTER OF SAID SECTION 36;

THENCE SOUTH 89 DEGREES 49 MINUTES 23 SECONDS EAST, A DISTANCE OF 1309.27 FEET TO THE NORTHEAST CORNER OF THE NORTHWEST QUARTER OF THE SOUTHEAST QUARTER OF SAID SECTION 36;

THENCE SOUTH 00 DEGREES 42 MINUTES 28 SECONDS WEST ALONG THE EAST LINE OF THE NORTH HALF OF THE NORTHWEST QUARTER OF THE SOUTHEAST QUARTER OF SAID SECTION 36, A DISTANCE OF 40.00 FEET;

THENCE NORTH 89 DEGREES 49 MINUTES 23 SECONDS WEST, A DISTANCE OF 1254.39 FEET;

THENCE ALONG THE ARC OF A CURVE TO THE LEFT, SAID CURVE HAVING A CENTRAL ANGLE OF 89 DEGREES 17 MINUTES 47 SECONDS A RADIUS OF 15.18 FEET, A DISTANCE OF 33.66 FEET;

THENCE SOUTH 00 DEGREES 53 MINUTES 50 SECONDS WEST, A DISTANCE OF 605.83 FEET;

THENCE NORTH 89 DEGREES 50 MINUTES 22 SECONDS WEST ALONG THE SOUTH LINE OF THE NORTH HALF OF THE NORTHWEST QUARTER OF THE SOUTHEAST QUARTER OF SAID SECTION 36, A DISTANCE OF 40.00 FEET TO THE SOUTHWEST CORNER OF THE NORTH HALF OF THE NORTHWEST QUARTER OF THE SOUTHEAST QUARTER OF SAID SECTION 36;

THENCE NORTH 00 DEGREES 52 MINUTES 50 SECONDS EAST, A DISTANCE OF 660.84 FEET TO THE POINT OF BEGINNING; AND

EXCEPT THAT PART AS DESCRIBED AS FOLLOWS:

BEGINNING AT A POINT ON THE SOUTH LINE OF THE NORTH HALF OF THE NORTHWEST QUARTER OF THE SOUTHEAST QUARTER OF SAID SECTION 36, FROM WHICH THE SOUTHWEST CORNER OF THE NORTH HALF OF THE NORTHWEST QUARTER OF THE SOUTHEAST QUARTER OF SAID SECTION 36 BEARS NORTH 89 DEGREES 50 MINUTES 22 SECONDS WEST A DISTANCE OF 40.00 FEET;

THENCE SOUTH 89 DEGREES 50 MINUTES 22 SECONDS EAST, A DISTANCE OF 1271.25 FEET TO THE SOUTHEAST CORNER OF THE NORTH HALF OF THE NORTHWEST QUARTER OF THE SOUTHEAST QUARTER OF SAID SECTION 36;

THENCE NORTH 00 DEGREES 42 MINUTES 28 SECONDS EAST ALONG THE EAST LINE OF THE NORTH HALF OF THE NORTHWEST QUARTER OF THE SOUTHEAST QUARTER OF SAID SECTION 36, A DISTANCE OF 523.44 FEET;

THENCE NORTH 89 DEGREES 49 MINUTES 23 SECONDS WEST, A DISTANCE OF 8.00 FEET;

THENCE SOUTH 00 DEGREES 42 MINUTES 28 SECONDS WEST, A DISTANCE OF 500.45 FEET;

THENCE SOUTH 45 DEGREES 26 MINUTES 02 SECONDS WEST, A DISTANCE OF 21.31 FEET;

THENCE NORTH 89 DEGREES 50 MINUTES 22 SECONDS WEST, A DISTANCE OF 1248.33 FEET;

THENCE SOUTH 00 DEGREES 52 MINUTES 50 SECONDS WEST, A DISTANCE OF 8.00 FEET TO THE POINT OF BEGINNING; AND

EXCEPT THE EAST 9.58333 FEET OF THE NORTH 97 FEET THEREOF; AND

EXCEPT ALL MINERALS, ORES AND METALS OF EVERY KIND AND CHARACTER, AND ALL COAL, ASPHALTUM, OIL, GASES, FERTILIZERS, FOSSILS AND OTHER LIKE SUBSTANCES, AS RESERVED IN THE PATENT FROM THE STATE OF ARIZONA, RECORDED IN BOOK 167 OF DEEDS PAGE 336, RECORDS OF MARICOPA COUNTY, ARIZONA.

ZONING: R1-7  
OCCUPANCY: PERMIT 1: 'E' EDUCATIONAL  
PERMIT 2: 'E' EDUCATIONAL  
'A-3' ASSEMBLY

**SITE:**  
LOT AREA GROSS: 17.86 ACRES (777,924 SF)

### BUILDING 1: 1-STORY, TYPE VB, HEIGHT (PERMIT 1)

GROSS FLOOR AREA: 23,860 SF  
COVERED AREA: 10,301 SF  
TOTAL BUILDING 1 AREA: 34,161 SF

### BUILDING 2: 1-STORY, TYPE IIB, HEIGHT (PERMIT 2)

GROSS FLOOR AREA: 27,262 SF  
COVERED AREA: 3,451 SF  
TOTAL BUILDING 2 AREA: 30,713 SF

### BUILDING 3: 1-STORY, TYPE VB, HEIGHT (PERMIT 1)

GROSS FLOOR AREA: 23,151 SF  
COVERED AREA: 11,015 SF  
TOTAL BUILDING 3 AREA: 34,794 SF

### BUILDING 4: 1-STORY, TYPE VB, HEIGHT (PERMIT 2)

GROSS FLOOR AREA: 352 SF  
COVERED AREA: 1,514 SF  
TOTAL BUILDING 4 AREA: 1,866 SF

### PARKING SUMMARY:

PARKING REQUIRED [32 CLASSROOMS + 6530 SF OFFICE AREAS]: 65  
NEW PARKING SPACES PROVIDED: 155  
ACCESSIBLE PARKING REQUIRED (PER IBC 2015 TABLE 1106.1): 6  
NEW ACCESSIBLE PARKING PROVIDED: 7\*  
VAN ACCESSIBLE PARKING SPACES REQUIRED: 1  
(1:6 PER IBC 2015 1106.5)  
NEW VAN ACCESSIBLE PARKING PROVIDED: 7  
\*ALL ACCESSIBLE PARKING IS VAN ACCESSIBLE

TOTAL SPACES PROVIDED: 162

DROP-OFF LANE LENGTH: 838 LF  
838 LF / 750 STUDENTS [DESIGN OCC.]: 1.12 LF/STUDENT

## CONSTRUCTION SET

THIS DRAWING IS AN INSTRUMENT OF SERVICE & IS THE PROPERTY OF SPS+ARCHITECTS LLP & MAY NOT BE REPRODUCED OR REPRODUCTIONS HEREOF USED WITHOUT WRITTEN PERMISSION.

REVISIONS		
MARK	DATE	DESCRIPTION
R1	05/06/2020	Internal Review
R2	05/11/2020	City Comments

REVIEWED BY: DC  
DRAWN BY: AT



ORIGINAL ISSUE  
DATE: 06-29-2020

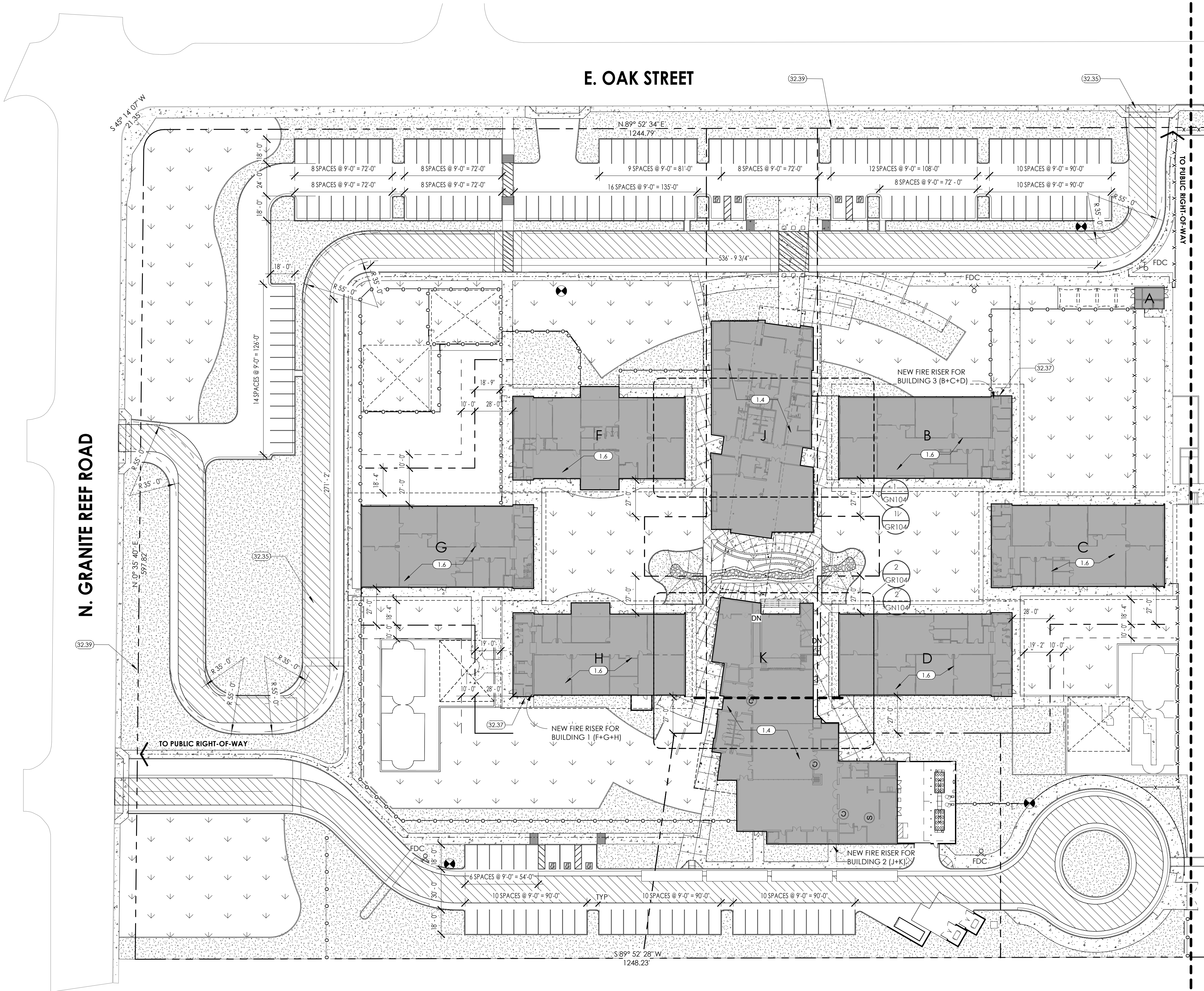
JOB No: 1930

SHEET:

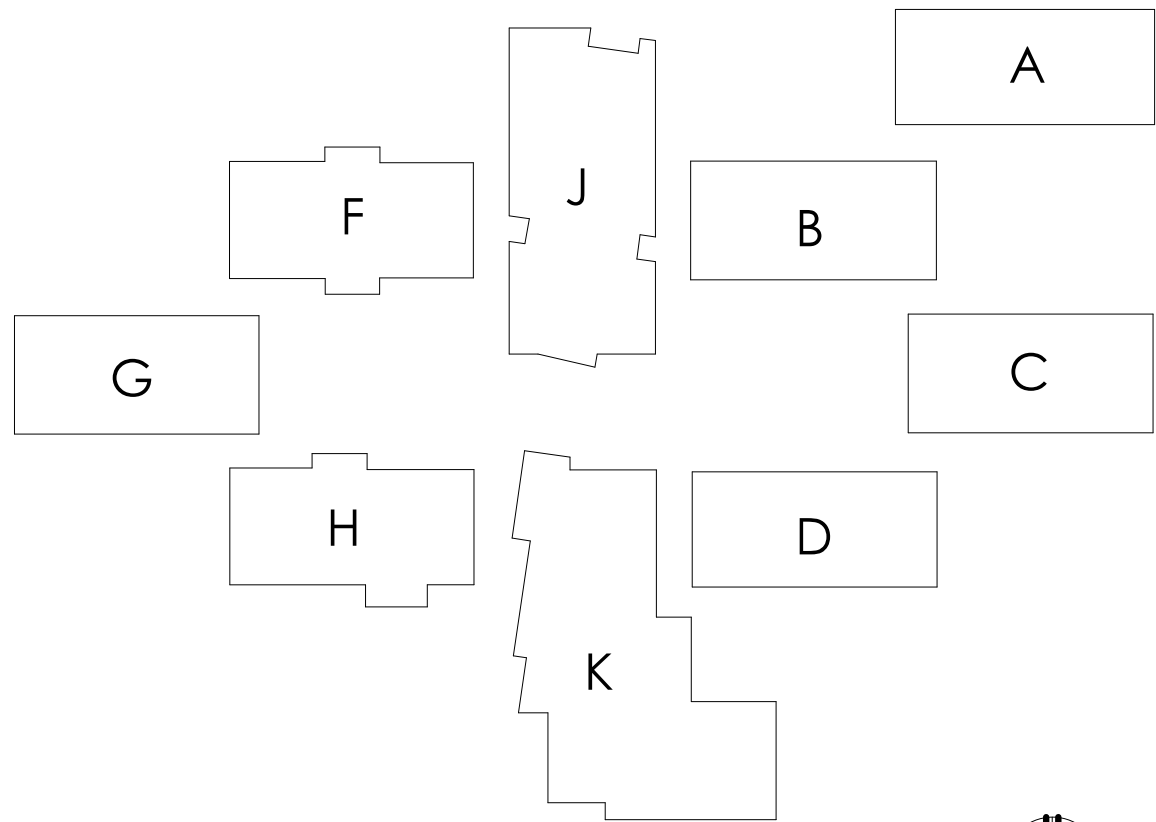
SP100



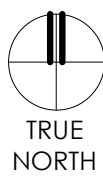
Blk 340 - /Hohokam Elementary School/1930 - HOHOKAM-04-24-2020.rvt  
6/29/2020 2:38:17 PM



SITE PLAN - WEST - FIRE  
1" = 40'-0"



KEY PLAN



SITE PLAN LEGEND

- NOTE: ALL FIRE LANES SHALL HAVE CITY OF SCOTTSDALE APPROVED FIRE LANE SIGNS AND STRIPED CURBING. FIRE RISER ROOM SIGNAGE TO INCLUDE BUILDING IDENTIFICATION FOR COVERAGE.
- S— EXISTING SEWER LINE. FIELD VERIFY EXACT LOCATION. COORDINATE WITH CIVIL DRAWINGS
  - W— EXISTING WATER LINE. FIELD VERIFY EXACT LOCATION. COORDINATE WITH CIVIL DRAWINGS
  - G— EXISTING GAS LINE. FIELD VERIFY EXACT LOCATION. COORDINATE WITH CIVIL DRAWINGS
  - ACCESSIBLE ROUTE
  - ▲ 30'-0" ACCESS GATE
  - ▨ FIRE LANE ACCESS ROAD, 20' WIDE MINIMUM LANE, 26' WIDE PATH WHERE SHOWN. PAINT CURBS RED AND PROVIDE FIRE LANE SIGNS PER CITY OF SCOTTSDALE REQUIREMENTS. ALL TURN RADII MEET AASHTO SU-40.
  - F FIRE LANE SIGN
  - S STOP SIGN
  - L LOADING SIGN
  - FDC FIRE DEPARTMENT CONNECTION (FDC)
  - Remote FDC. SIGNAGE TO INCLUDE BUILDING IDENTIFICATION FOR COVERAGE
  - ⊗ FIRE HYDRANT
  - ⊗ LIGHT BOLLARD
  - SITE LIGHT
  - ▭ SITE DRAINAGE

KEY NOTES

- 1.4 NEW BUILDING - PERMIT 2
- 1.6 RENOVATION BUILDING - PERMIT 1
- 32.35 20'-0" WIDE FIRE LANE/DRIVE MINIMUM, 26'-0" WIDE PATH WHERE SHOWN. ALL TURN RADII MEET AASHTO SU-40."
- 32.37 KNOX BOX - REFER TO DETAIL 13/SP105
- 32.39 PROPERTY LINE - REFER TO CIVIL DRAWINGS

HOHOKAM ELEMENTARY SCHOOL  
SCOTTSDALE UNIFIED SCHOOL DISTRICT  
8451 E OAK STREET  
SCOTTSDALE, AZ 85257  
SITE PLAN - WEST - FIRE LANE

CONSTRUCTION SET

THIS DRAWING IS AN INSTRUMENT OF SERVICE & IS THE PROPERTY OF SPS+ARCHITECTS LLP & MAY NOT BE REPRODUCED OR REPRODUCTIONS HEREOF USED WITHOUT WRITTEN PERMISSION.

REVISIONS		
MARK	DATE	DESCRIPTION
R1	05/06/2020	Internal Review
R2	05/11/2020	City Comments

REVIEWED BY: DC  
DRAWN BY: AT

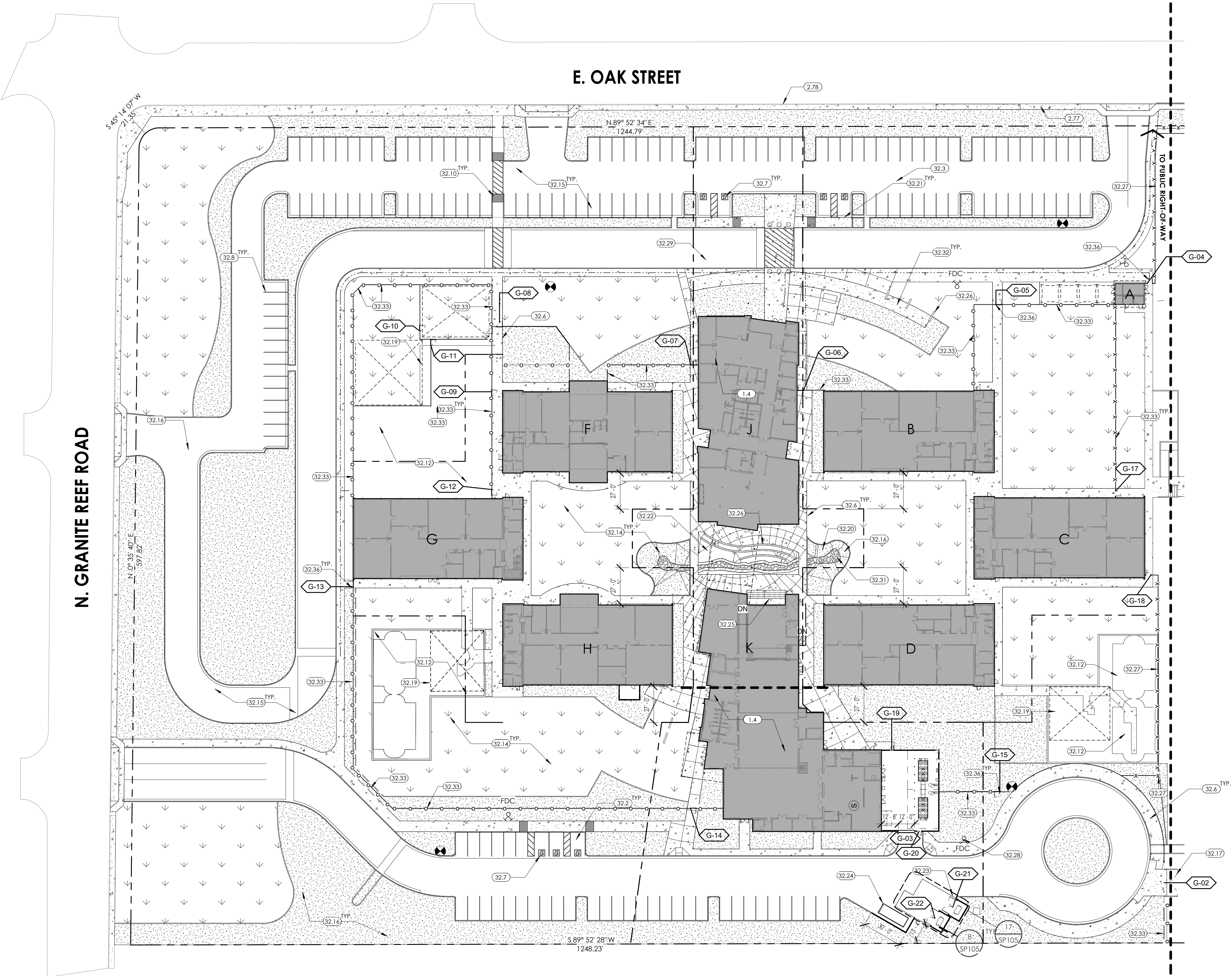


ORIGINAL ISSUE  
DATE: 06-29-2020  
JOB No: 1930  
SHEET:

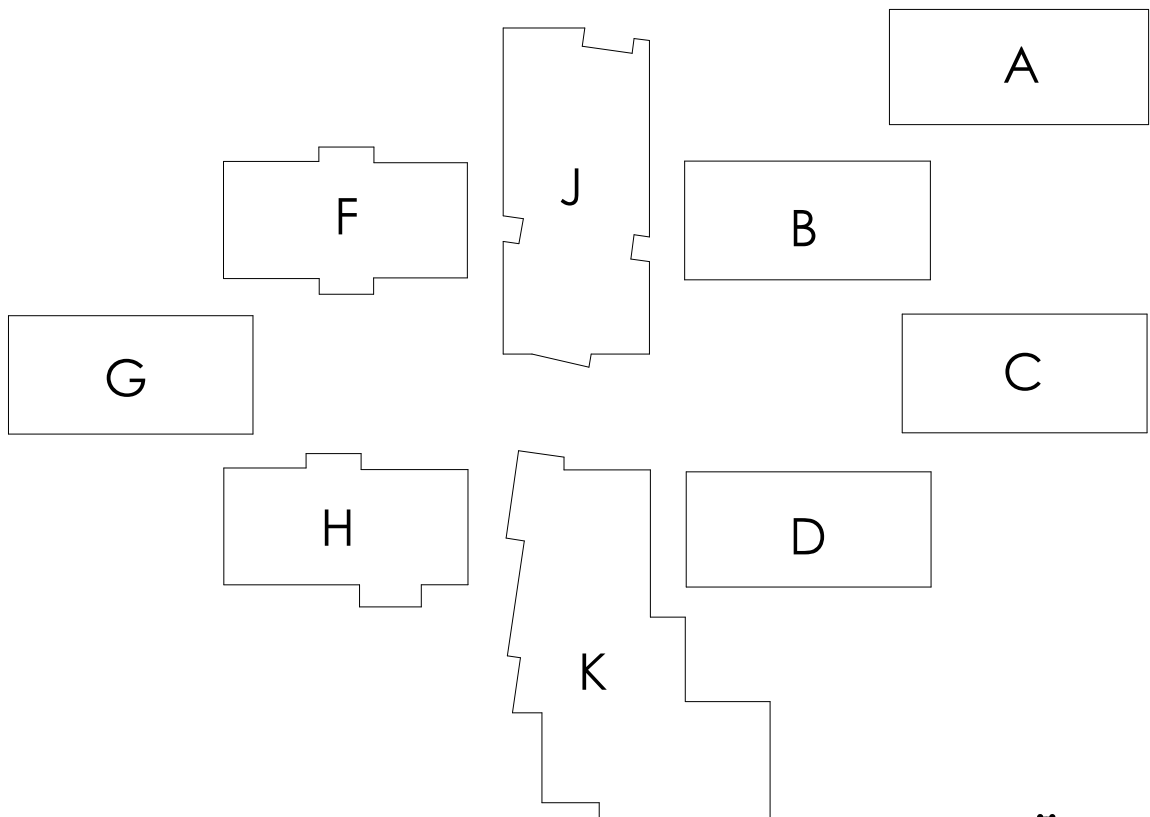
SP101

## SITE PLAN - WEST

1" = 40'-0"



## KEY PLAN



## SITE PLAN LEGEND

- NOTE: ALL FIRE LANES SHALL HAVE CITY OF SCOTTSDALE APPROVED FIRE LANE SIGNS AND STRIPED CURBING. FIRE RISER ROOM SIGNAGE TO INCLUDE BUILDING IDENTIFICATION FOR COVERAGE.
- S — EXISTING SEWER LINE, FIELD VERIFY EXACT LOCATION, COORDINATE WITH CIVIL DRAWINGS
  - W — EXISTING WATER LINE, FIELD VERIFY EXACT LOCATION, COORDINATE WITH CIVIL DRAWINGS
  - G — EXISTING GAS LINE, FIELD VERIFY EXACT LOCATION, COORDINATE WITH CIVIL DRAWINGS
  - - - ACCESSIBLE ROUTE
  - ▲ 30'-0" ACCESS GATE
  - ▨ FIRE LANE ACCESS ROAD, 20' WIDE MINIMUM LANE, 26' WIDE PATH WHERE SHOWN, PAINT CURBS RED AND PROVIDE FIRE LANE SIGNS PER CITY OF SCOTTSDALE REQUIREMENTS, ALL TURN RADII MEET AASHTO SU-40.
  - F FIRE LANE SIGN
  - S STOP SIGN
  - L LOADING SIGN
  - FDC FIRE DEPARTMENT CONNECTION (FDC)
  - REMOTE FDC, SIGNAGE TO INCLUDE BUILDING IDENTIFICATION FOR COVERAGE
  - FIRE HYDRANT
  - LIGHT BOLLARD
  - SITE LIGHT
  - ▭ SITE DRAINAGE

## KEY NOTES

- 1.4 NEW BUILDING - PERMIT 2
- 2.77 EXISTING CONCRETE SIDEWALK TO REMAIN
- 2.78 EXISTING CONCRETE CURB TO REMAIN
- 32.2 CONCRETE WHEEL STOPS AT ADA PARKING SPACES - REFER TO CIVIL DRAWINGS
- 32.3 PAINTED PEDESTRIAN CROSSING
- 32.6 CONCRETE SIDEWALK - REFER TO DETAIL 3/SP104, HARDSCAPE AND CIVIL DRAWINGS
- 32.7 PAINTED ACCESSIBLE PARKING SYMBOL - REFER TO DETAIL 10/SP104
- 32.8 PAINTED PARKING STRIPE
- 32.10 ADA COMPLIANT ACCESS RAMP - REFER TO CIVIL DRAWINGS
- 32.12 PLAYGROUND AREA - REFER TO LANDSCAPE DRAWINGS
- 32.14 TURF - REFER TO LANDSCAPE DRAWINGS
- 32.15 ASPHALT PAVING - REFER TO CIVIL DRAWINGS
- 32.16 DECOMPOSED GRANITE - REFER TO LANDSCAPE DRAWINGS
- 32.17 VEHICLE GATE - SEE GATE SCHEDULE
- 32.19 PLAYGROUND CANOPY STRUCTURE - DEFERRED SUBMITTAL
- 32.20 FLAGPOLE
- 32.21 ACCESSIBLE PARKING SIGN - REFER TO DETAIL 15/SP104
- 32.22 ARTIFICIAL TURF - REFER TO LANDSCAPE DRAWINGS
- 32.23 TRASH ENCLOSURE - REFER TO CITY OF SCOTTSDALE STANDARD DETAIL 2146-1
- 32.24 SUSPENDED GROUNDSKEEPER COLLECTION
- 32.25 CAST-IN-PLACE CONCRETE STAIRS
- 32.26 CAST-IN-PLACE CONCRETE WALLS
- 32.27 CHAINLINK FENCE DUGOUT - REFER TO CIVIL DRAWINGS
- 32.28 REMOTE FIRE DEPARTMENT CONNECTION - REFER TO CIVIL DRAWINGS
- 32.29 SPEED TABLE - REFER TO CIVIL DRAWINGS
- 32.31 FRACTURED ROCK SET IN MORTAR - REFER TO LANDSCAPE DRAWINGS
- 32.32 CONCRETE PAVERS - REFER TO LANDSCAPE DRAWINGS
- 32.33 WROUGHT IRON FENCE - REFER TO LANDSCAPE DRAWINGS
- 32.36 PEDESTRIAN GATE - SEE GATE SCHEDULE

## CONSTRUCTION SET

THIS DRAWING IS AN INSTRUMENT OF SERVICE & IS THE PROPERTY OF SPS+ARCHITECTS LLP & MAY NOT BE REPRODUCED OR REPRODUCTIONS HEREOF USED WITHOUT WRITTEN PERMISSION.

REVISIONS		
MARK	DATE	DESCRIPTION
R1	05/06/2020	Internal Review
R2	05/11/2020	City Comments

REVIEWED BY: DC  
DRAWN BY: AT



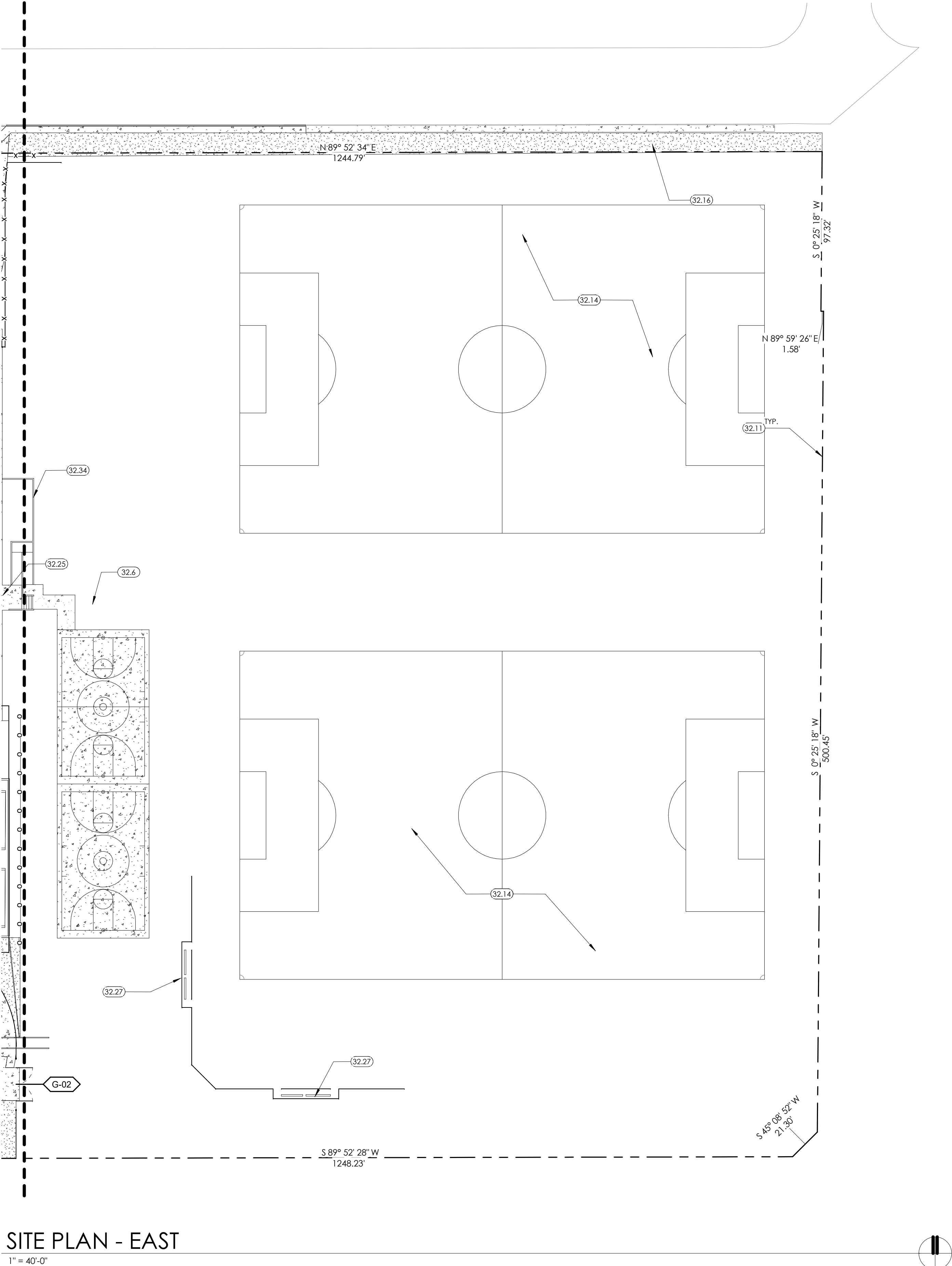
ORIGINAL ISSUE  
DATE: 06-29-2020  
JOB No: 1930  
SHEET:

SP102

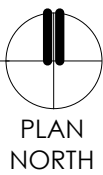
HOHOKAM ELEMENTARY SCHOOL  
SCOTTSDALE UNIFIED SCHOOL DISTRICT  
8451 E OAK STREET  
SCOTTSDALE, AZ 85257  
SITE PLAN - WEST

SPS+ARCHITECTS LLP  
8681 E VIA DE NEGRO  
SCOTTSDALE, AZ 85258  
P: 480.991.0400

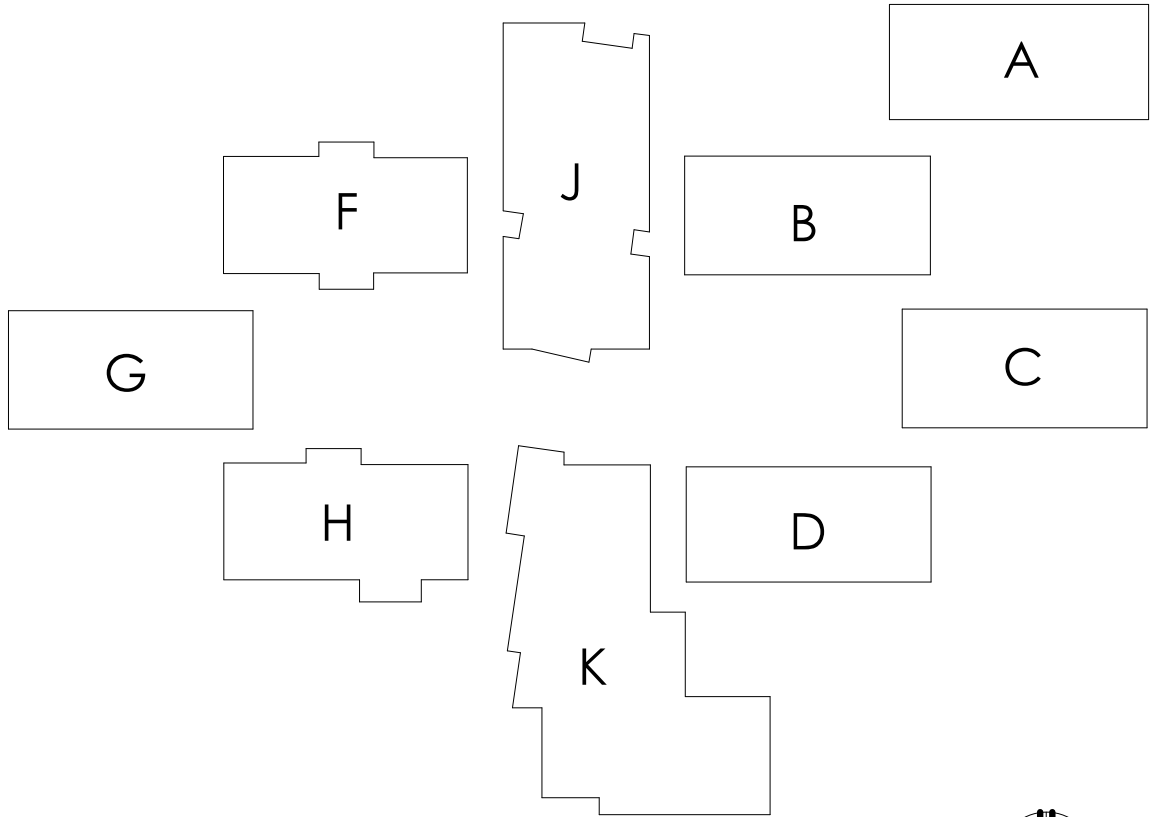




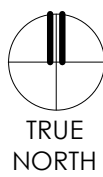
SITE PLAN - EAST



GATE SCHEDULE							
DOOR #	TYPE	KNOX EQT.	MANUAL/ AUTOMATIC	PANIC HARDWARE	HARDWARE	DETAIL	NOTES
G-02	WROUGHT IRON VEHICLE GATE 20' X 6' DOUBLE SWING GATE	KNOX	MANUAL	NO		9/SP105	PROVIDE KNOX BOX
G-03	WROUGHT IRON VEHICLE GATE 12' X 8' ROLLING GATE		MANUAL	NO		4/SP105	HARDWARE BY GATE MANUFACTURER
G-04	CHAINLINK PEDESTRIAN GATE 4' X 7' SINGLE SWING GATE		MANUAL	NO		16/SP105	PROVIDE DEADBOLT LOCK; HARDWARE BY GATE MANUFACTURER
G-05	WROUGHT IRON PEDESTRIAN GATE 4' X 7' SINGLE SWING GATE		MANUAL	YES		7/L204	PROVIDE MOUNTING PLATE FOR PANIC HARDWARE; SURFACE CLOSER; FLOOR STOP; HARDWARE BY GATE MANUFACTURER
G-06	WROUGHT IRON PEDESTRIAN GATE 4' X 7' SINGLE SWING GATE		MANUAL	YES		7/L204	PROVIDE MOUNTING PLATE FOR PANIC HARDWARE; SURFACE CLOSER; FLOOR STOP; HARDWARE BY GATE MANUFACTURER
G-07	WROUGHT IRON PEDESTRIAN GATE 4' X 7' SINGLE SWING GATE		MANUAL	YES		7/L204	PROVIDE MOUNTING PLATE FOR PANIC HARDWARE; SURFACE CLOSER; FLOOR STOP; HARDWARE BY GATE MANUFACTURER
G-08	WROUGHT IRON PEDESTRIAN GATE 4' X 7' SINGLE SWING GATE		MANUAL	YES		7/L204	PROVIDE MOUNTING PLATE FOR PANIC HARDWARE; SURFACE CLOSER; FLOOR STOP; HARDWARE BY GATE MANUFACTURER
G-09	WROUGHT IRON PEDESTRIAN GATE 4' X 7' SINGLE SWING GATE		MANUAL	NO		7/L204	PROVIDE DEADBOLT LOCK; HARDWARE BY GATE MANUFACTURER
G-10	WROUGHT IRON PEDESTRIAN GATE 4' X 7' SINGLE SWING GATE		MANUAL	NO		7/L204	PROVIDE DEADBOLT LOCK; HARDWARE BY GATE MANUFACTURER
G-11	WROUGHT IRON PEDESTRIAN GATE 4' X 7' SINGLE SWING GATE		MANUAL	NO		7/L204	PROVIDE DEADBOLT LOCK; HARDWARE BY GATE MANUFACTURER
G-12	WROUGHT IRON PEDESTRIAN GATE 4' X 7' SINGLE SWING GATE		MANUAL	NO		7/L204	PROVIDE DEADBOLT LOCK; HARDWARE BY GATE MANUFACTURER
G-13	WROUGHT IRON PEDESTRIAN GATE 4' X 7' SINGLE SWING GATE		MANUAL	YES		7/L204	PROVIDE MOUNTING PLATE FOR PANIC HARDWARE; SURFACE CLOSER; FLOOR STOP; HARDWARE BY GATE MANUFACTURER
G-14	WROUGHT IRON PEDESTRIAN GATE 4' X 7' SINGLE SWING GATE		MANUAL	YES		7/L204	PROVIDE MOUNTING PLATE FOR PANIC HARDWARE; SURFACE CLOSER; FLOOR STOP; HARDWARE BY GATE MANUFACTURER
G-15	WROUGHT IRON PEDESTRIAN GATE 4' X 7' SINGLE SWING GATE		MANUAL	YES		7/L204	PROVIDE MOUNTING PLATE FOR PANIC HARDWARE; SURFACE CLOSER; FLOOR STOP; HARDWARE BY GATE MANUFACTURER
G-17	CHAINLINK PEDESTRIAN GATE 4' X 7' SINGLE SWING GATE		MANUAL	NO		7/L204	PROVIDE DEADBOLT LOCK; HARDWARE BY GATE MANUFACTURER
G-18	CHAINLINK PEDESTRIAN GATE 4' X 7' SINGLE SWING GATE		MANUAL	NO		7/L204	PROVIDE DEADBOLT LOCK; HARDWARE BY GATE MANUFACTURER
G-19	WROUGHT IRON PEDESTRIAN GATE 4' X 6' SINGLE SWING GATE		MANUAL	NO		7/L204	PROVIDE DEADBOLT LOCK; HARDWARE BY GATE MANUFACTURER
G-20	WROUGHT IRON PEDESTRIAN GATE 4' X 6' SINGLE SWING GATE		MANUAL	NO		7/L204	PROVIDE DEADBOLT LOCK; HARDWARE BY GATE MANUFACTURER
G-21	TRASH ENCLOSURE GATE 13' x 6' DOUBLE SWING GATE		MANUAL	NO		20/SP105	HARDWARE BY GATE MANUFACTURER
G-22	TRASH ENCLOSURE GATE 13' x 6' DOUBLE SWING GATE		MANUAL	NO		20/SP105	HARDWARE BY GATE MANUFACTURER



KEY PLAN



### SITE PLAN LEGEND

NOTE: ALL FIRE LANES SHALL HAVE CITY OF SCOTTSDALE APPROVED FIRE LANE SIGNS AND STRIPED CURBING. FIRE RISER ROOM SIGNAGE TO INCLUDE BUILDING IDENTIFICATION FOR COVERAGE.

- S— EXISTING SEWER LINE. FIELD VERIFY EXACT LOCATION. COORDINATE WITH CIVIL DRAWINGS
- W— EXISTING WATER LINE. FIELD VERIFY EXACT LOCATION. COORDINATE WITH CIVIL DRAWINGS
- -G- - EXISTING GAS LINE. FIELD VERIFY EXACT LOCATION. COORDINATE WITH CIVIL DRAWINGS
- — — ACCESSIBLE ROUTE
- ▲ 30'-0" ACCESS GATE
- ▨ FIRE LANE ACCESS ROAD, 20' WIDE MINIMUM LANE, 26' WIDE PATH WHERE SHOWN. PAINT CURBS RED AND PROVIDE FIRE LANE SIGNS PER CITY OF SCOTTSDALE REQUIREMENTS. ALL TURN RADII MEET AASHTO SU-40.
- F FIRE LANE SIGN
- S STOP SIGN
- L LOADING SIGN
- ⋈ FIRE DEPARTMENT CONNECTION (FDC)
- ⋈ REMOTE FDC. SIGNAGE TO INCLUDE BUILDING IDENTIFICATION FOR COVERAGE
- ⊗ FIRE HYDRANT
- ⊗ LIGHT BOLLARD
- SITE LIGHT
- SITE DRAINAGE

### KEY NOTES

32.6 CONCRETE SIDEWALK - REFER TO DETAIL 3/SP104, HARDSCAPE AND CIVIL DRAWINGS

32.11 7'-0" HIGH CHAINLINK FENCE - REFER TO DETAILS ON SHEET SP105

32.14 TURF - REFER TO LANDSCAPE DRAWINGS

32.16 DECOMPOSED GRANITE - REFER TO LANDSCAPE DRAWINGS

32.25 CAST-IN-PLACE CONCRETE STAIRS

32.27 CHAINLINK FENCE DUGOUT - REFER TO CIVIL DRAWINGS

32.34 CAST-IN-PLACE CONCRETE RAMP

HOHOKAM ELEMENTARY SCHOOL  
SCOTTSDALE UNIFIED SCHOOL DISTRICT  
8451 E OAK STREET  
SCOTTSDALE, AZ 85257  
SITE PLAN - EAST

CONSTRUCTION SET

THIS DRAWING IS AN INSTRUMENT OF SERVICE & IS THE PROPERTY OF SPS+ARCHITECTS LLP & MAY NOT BE REPRODUCED OR REPRODUCTIONS HEREOF USED WITHOUT WRITTEN PERMISSION.

REVISIONS		
MARK	DATE	DESCRIPTION
R1	05/06/2020	Internal Review
R2	05/11/2020	City Comments

REVIEWED BY: DC  
DRAWN BY: AT



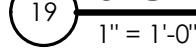
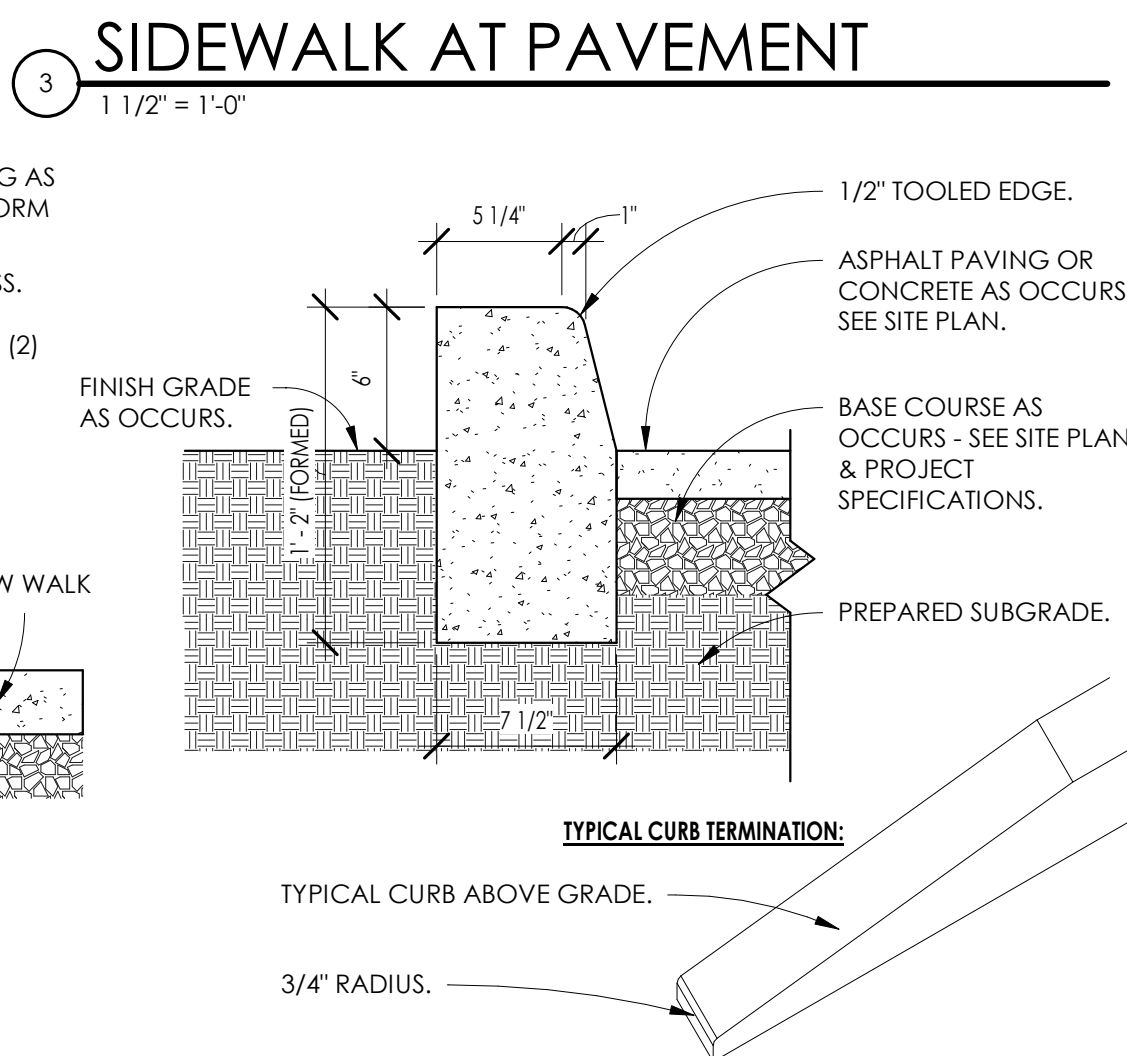
ORIGINAL ISSUE  
DATE: 06-29-2020  
JOB No: 1930  
SHEET:

SP103

SPS+ARCHITECTS LLP  
8681 E. VIA DE NEGRO DR.  
SCOTTSDALE, AZ 85258  
P: 480.991.0400



RFI - 107 Bollards Dimension Layout



REVISIONS		
MARK	DATE	DESCRIPTION
R1	05/06/2020	Internal Review

REVIEWED BY: Checker  
DRAWN BY: Author



ORIGINAL ISSUE  
DATE: 06-29-2020

JOB No: 1930

SHEET:

SP104



CONSTRUCTION SET

THIS DRAWING IS AN INSTRUMENT OF SERVICE & IS THE PROPERTY OF SPS+ARCHITECTS LLP & MAY NOT BE REPRODUCED OR REPRODUCTIONS HEREOF USED WITHOUT WRITTEN PERMISSION.

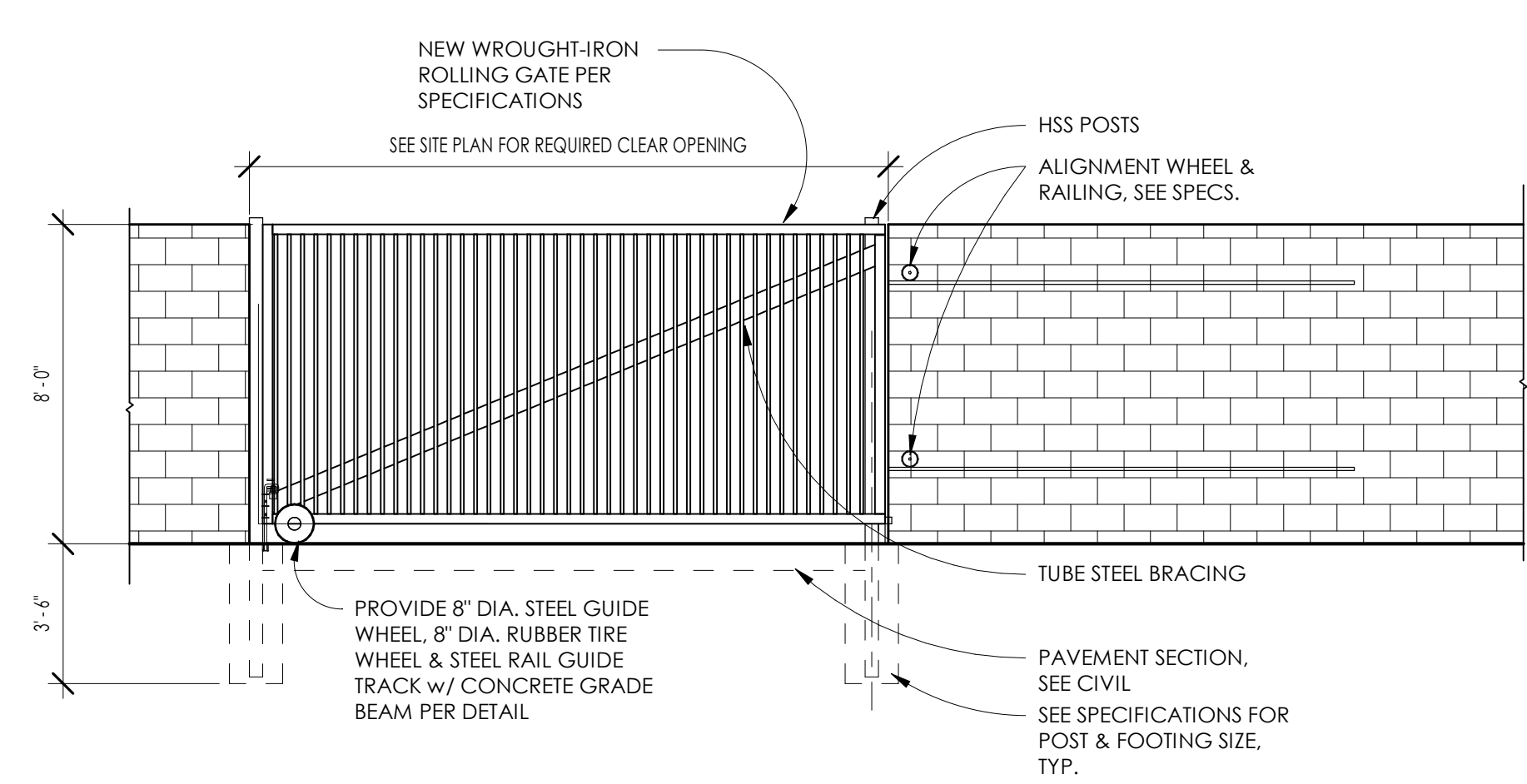
REVISIONS		
MARK	DATE	DESCRIPTION
R1	05/06/20	Internal Review

REVIEWED BY: DC  
DRAWN BY: AT



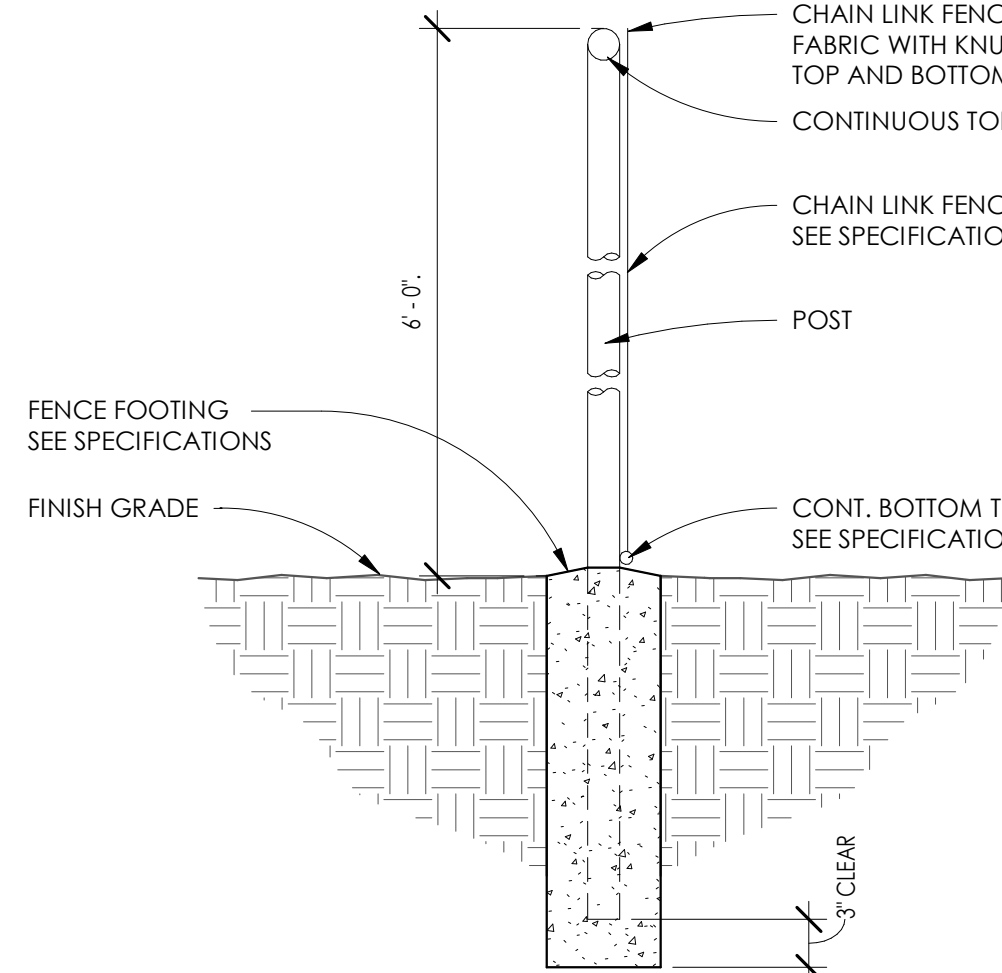
ORIGINAL ISSUE  
DATE: 06-29-2020  
JOB No: 1930  
SHEET:

SP105



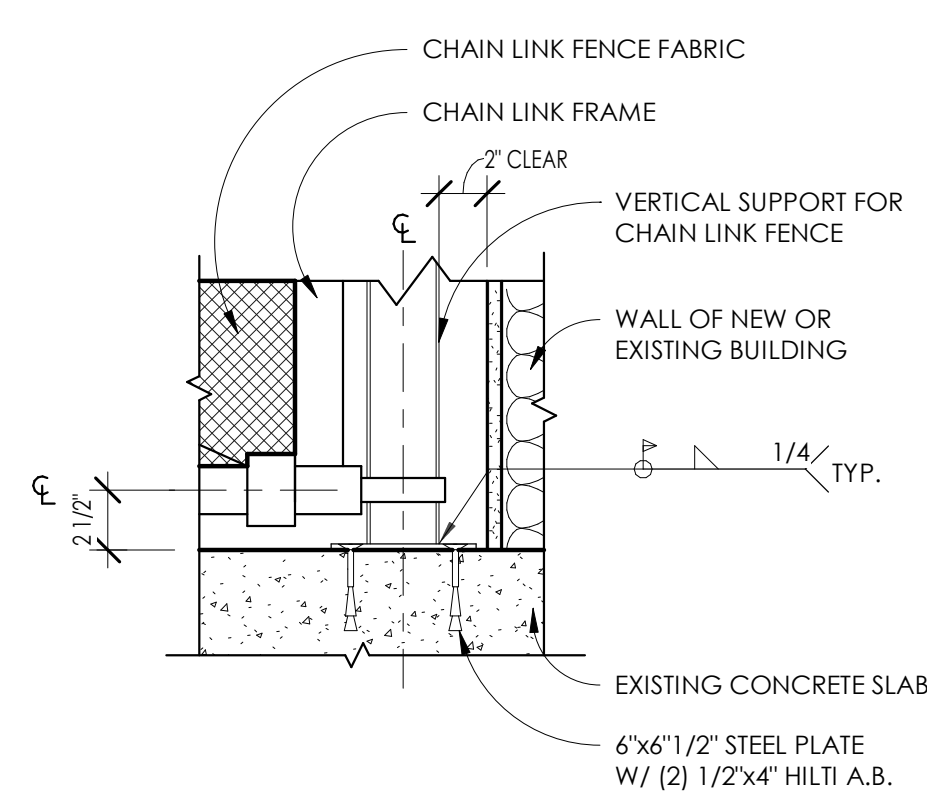
4 WROUGHT-IRON ROLLING GATE ELEVATION

1/4\" = 1'-0"



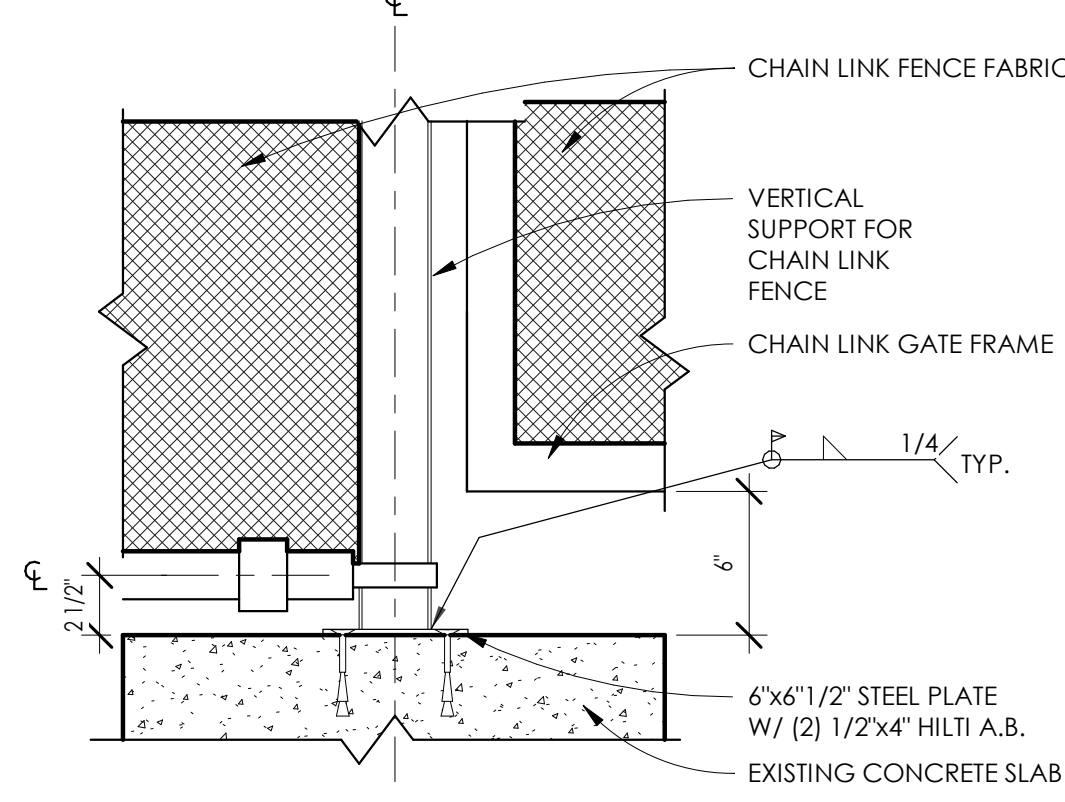
3 CHAIN LINK FENCE POST

1\" = 1'-0"



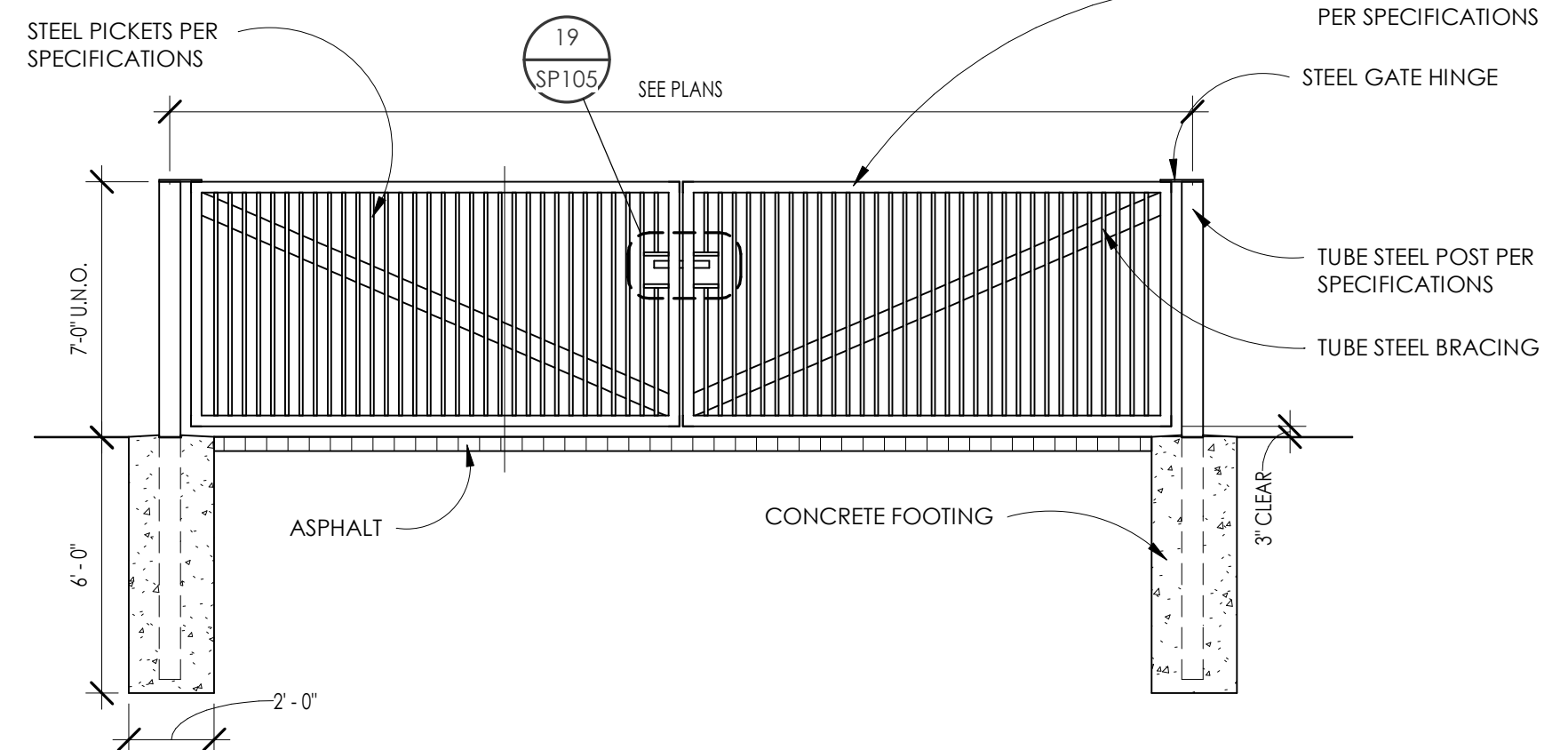
2 CHAIN-LINK FENCE @ GATE

1 1/2\" = 1'-0"



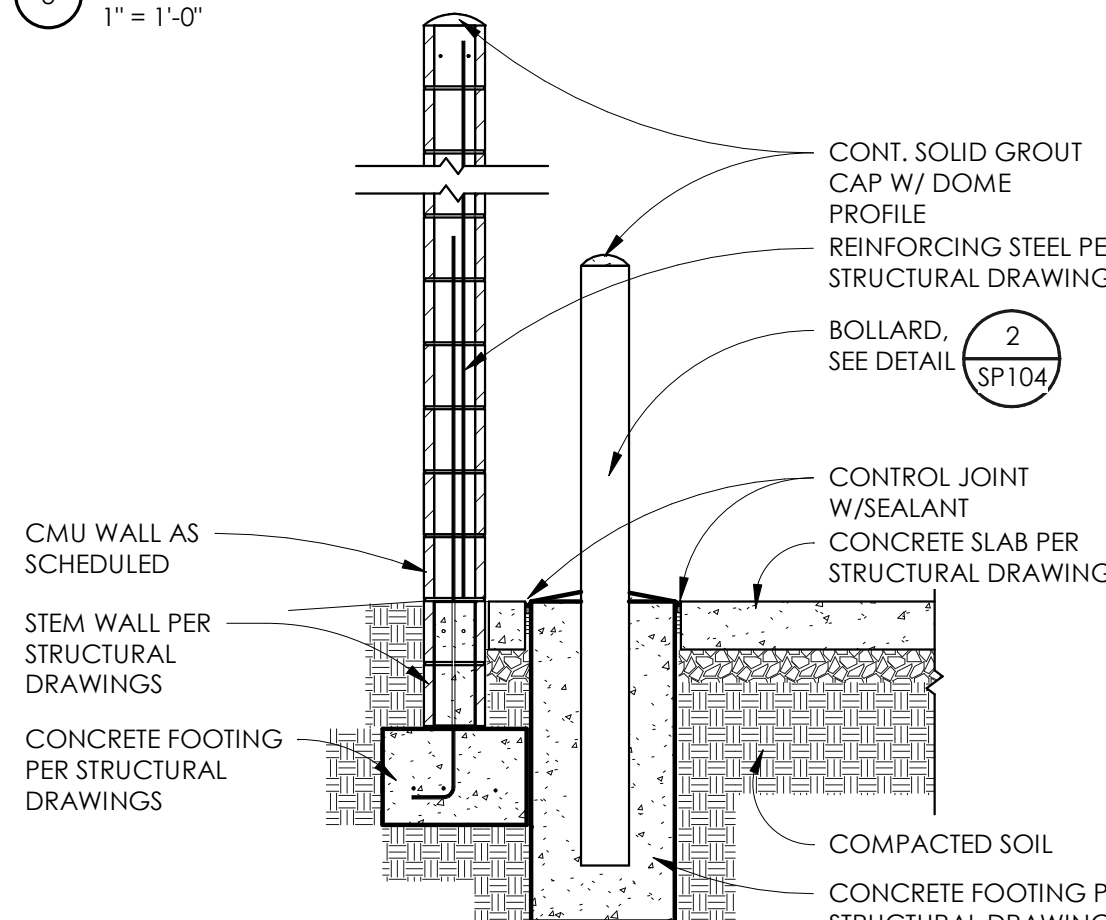
1 CHAIN-LINK FENCE DETAIL

1 1/2\" = 1'-0"



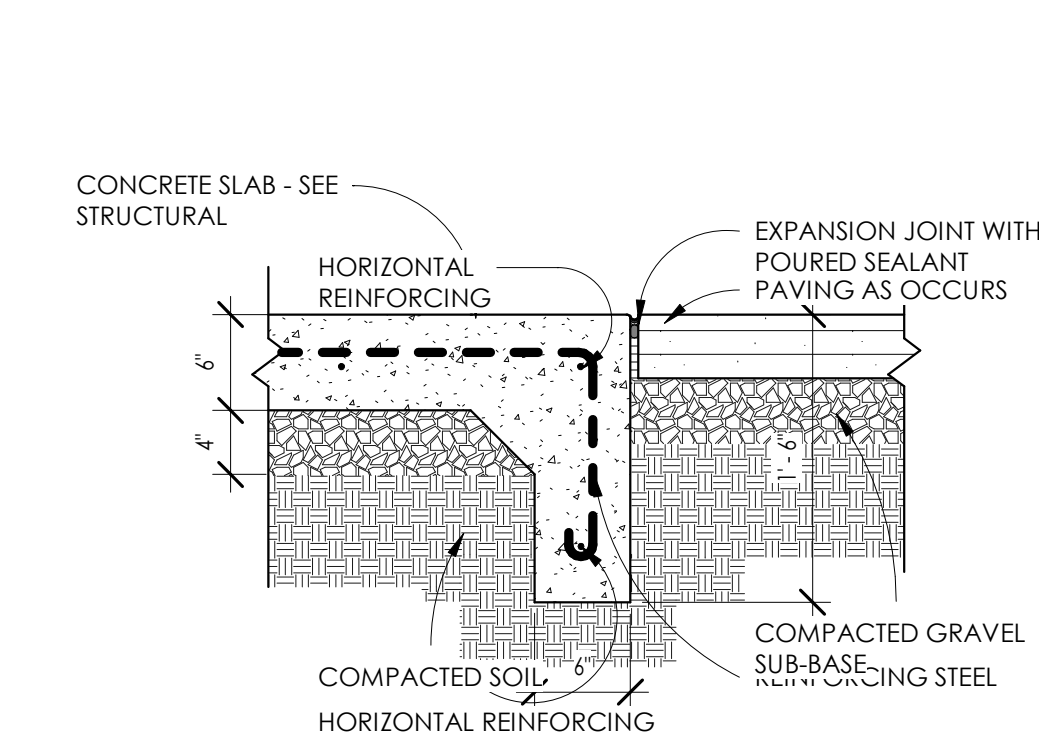
9 TRAFFIC CONTROL GATE

1/4\" = 1'-0"



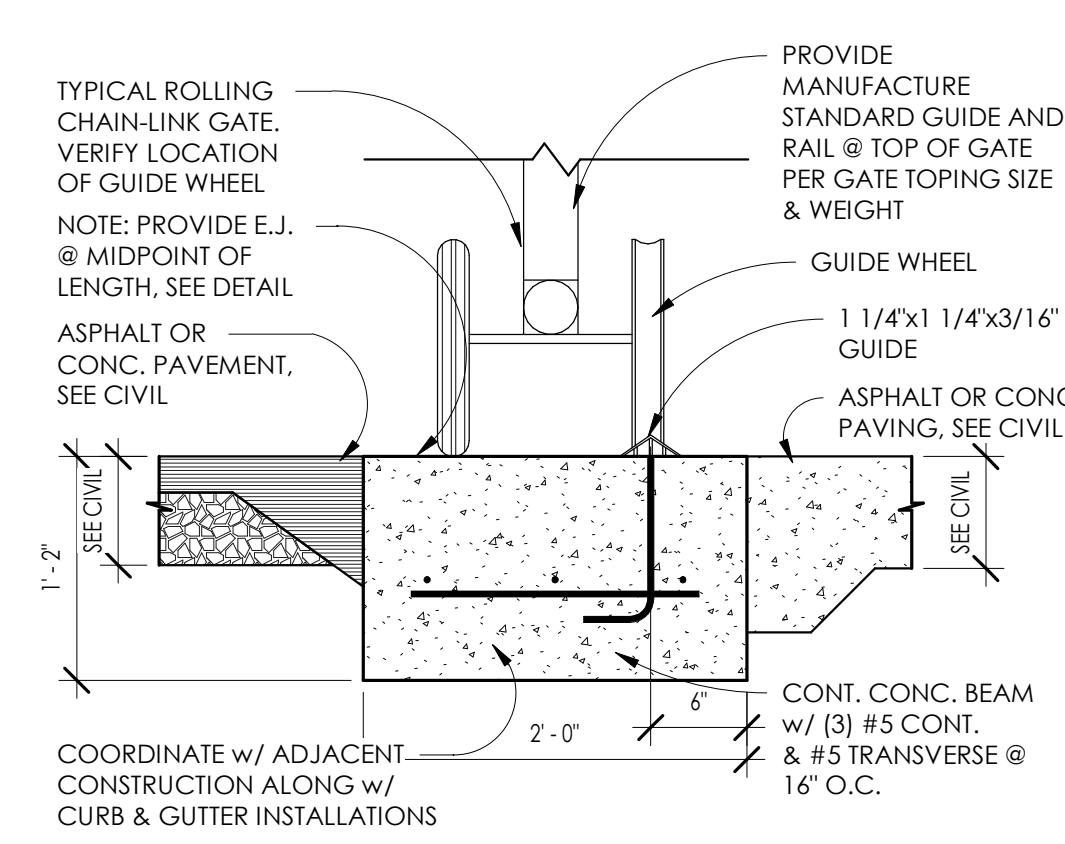
8 REFUSE ENCLOSURE WALL

1/2\" = 1'-0"



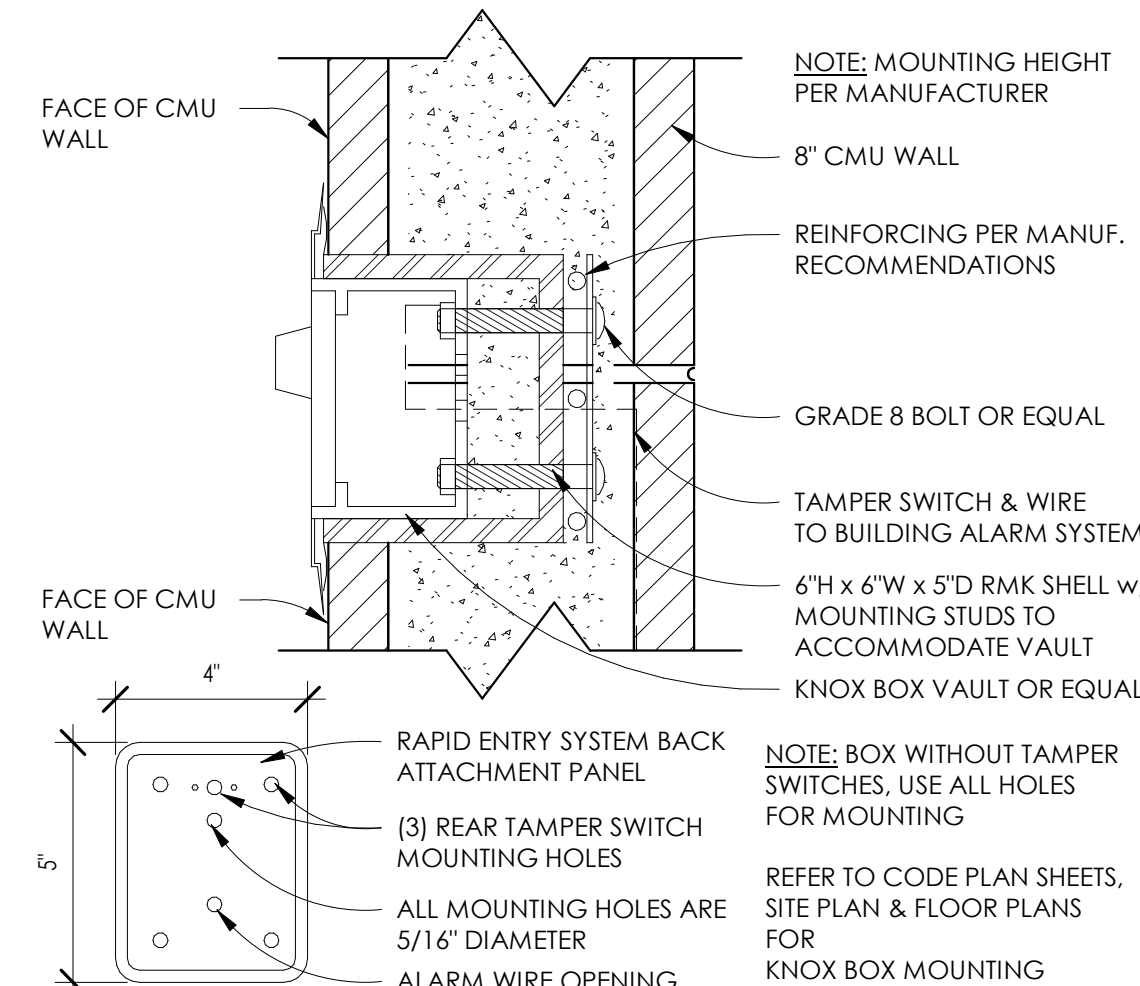
7 REFUSE ENCLOSURE PAD

1\" = 1'-0"



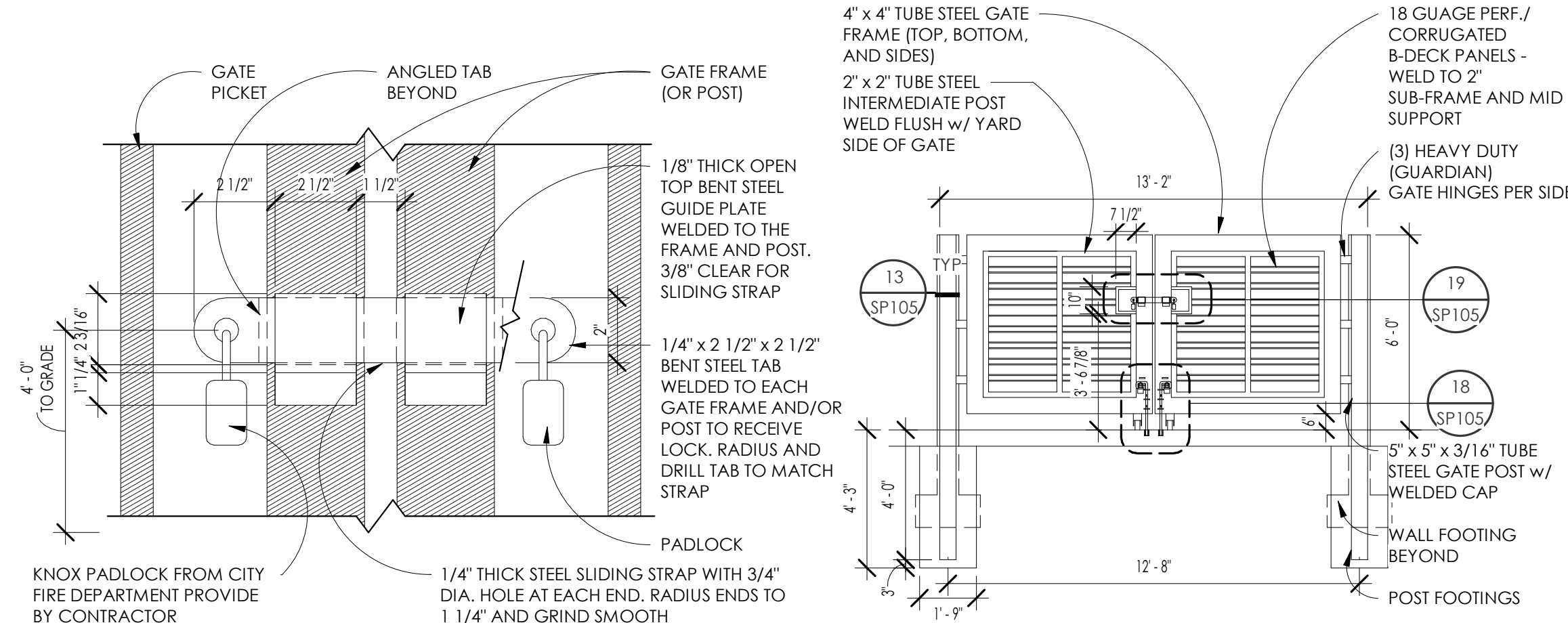
6 CHAIN-LINK ROLLING GATE DETAIL

1\" = 1'-0"



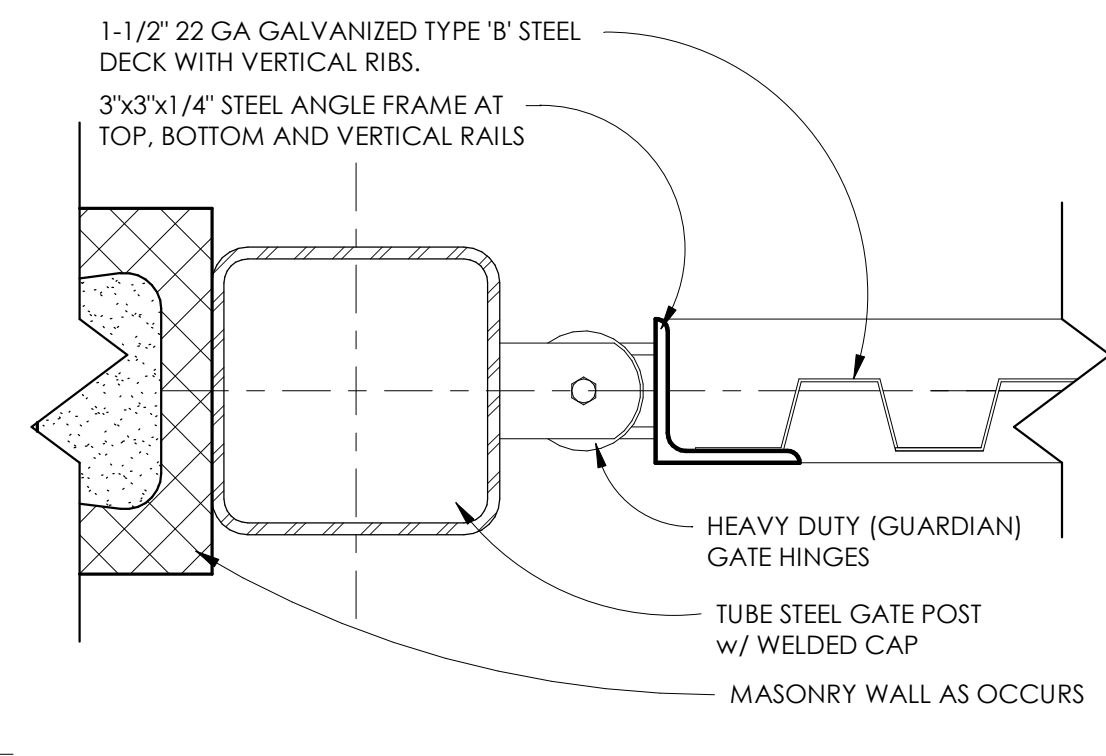
15 KNOX BOX CONNECTION

3\" = 1'-0"



19 DOUBLE PADLOCK DETAIL

3\" = 1'-0"



13 GATE JAMB

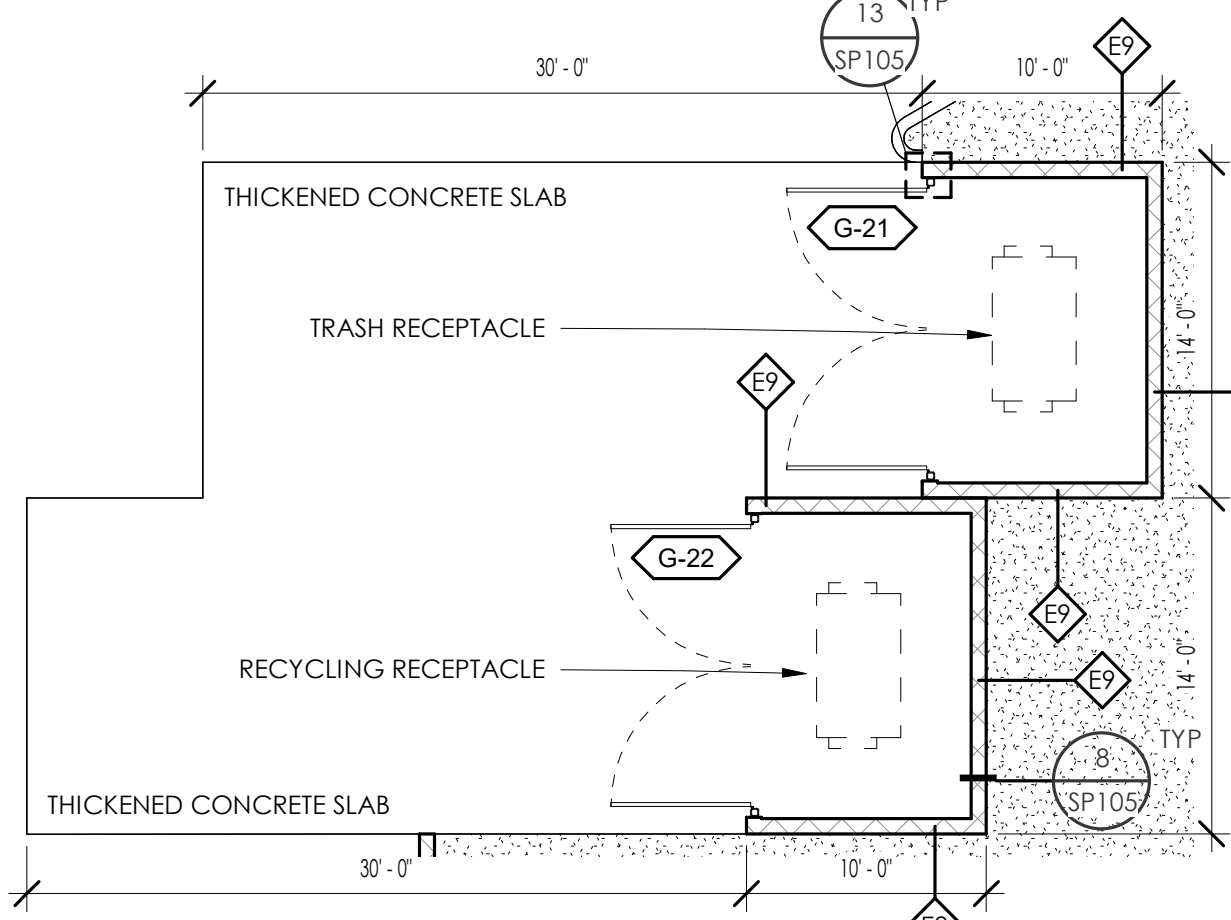
3\" = 1'-0"

12 STEEL GATE HARDWARE, TYP.

1\" = 1'-0"

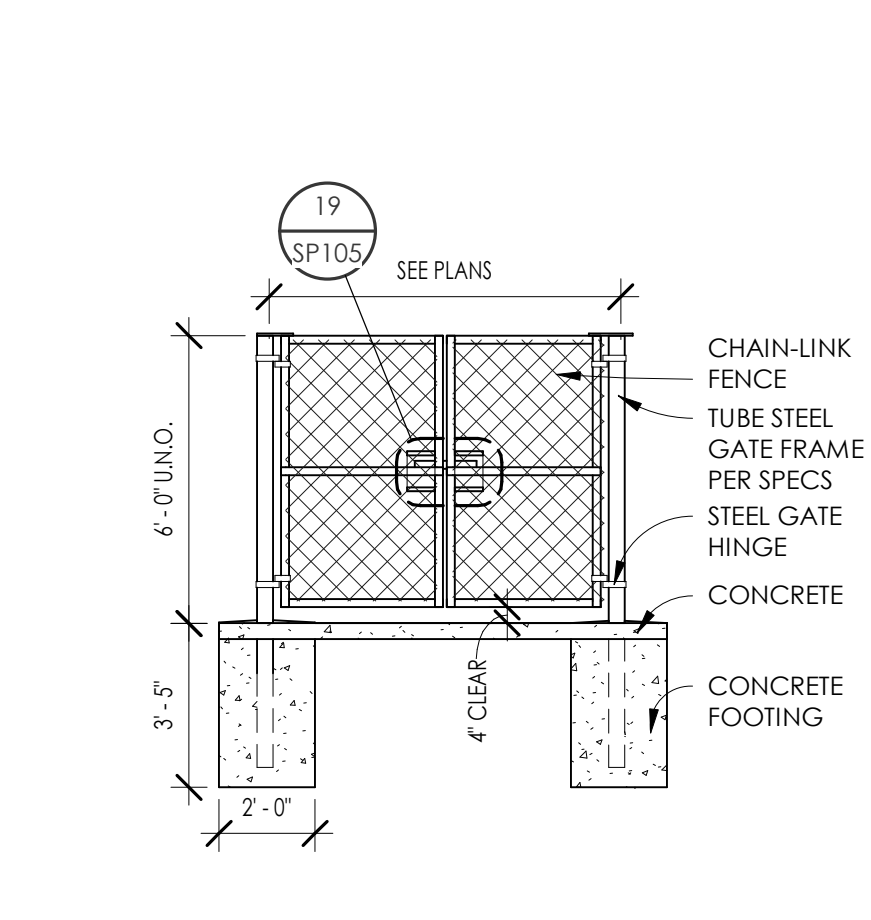
11 STEEL GATE HINGES

1\" = 1'-0"



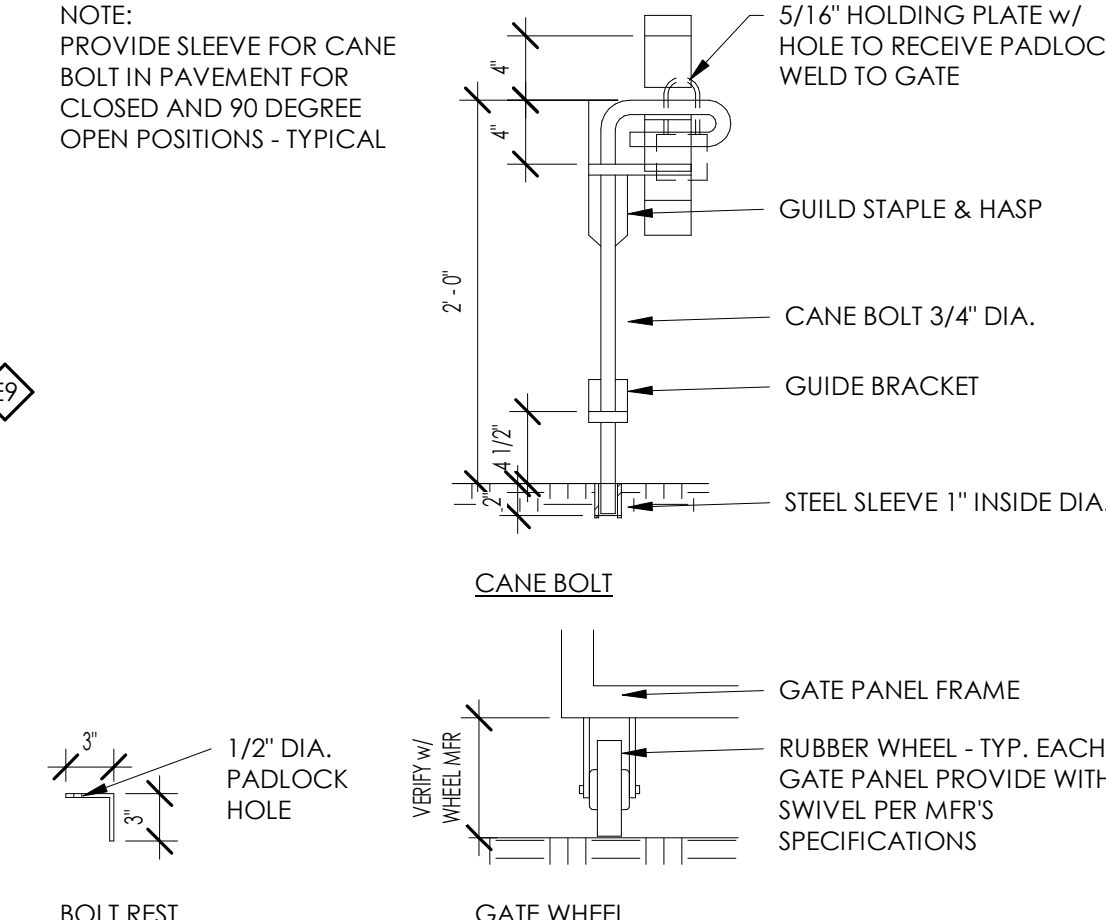
17 TRASH ENCLOSURE

1/8\" = 1'-0"



16 CHAIN-LINK SWING GATE ELEV.

1/4\" = 1'-0"



18 CANE BOLT AT WHEEL GATE

1\" = 1'-0"

