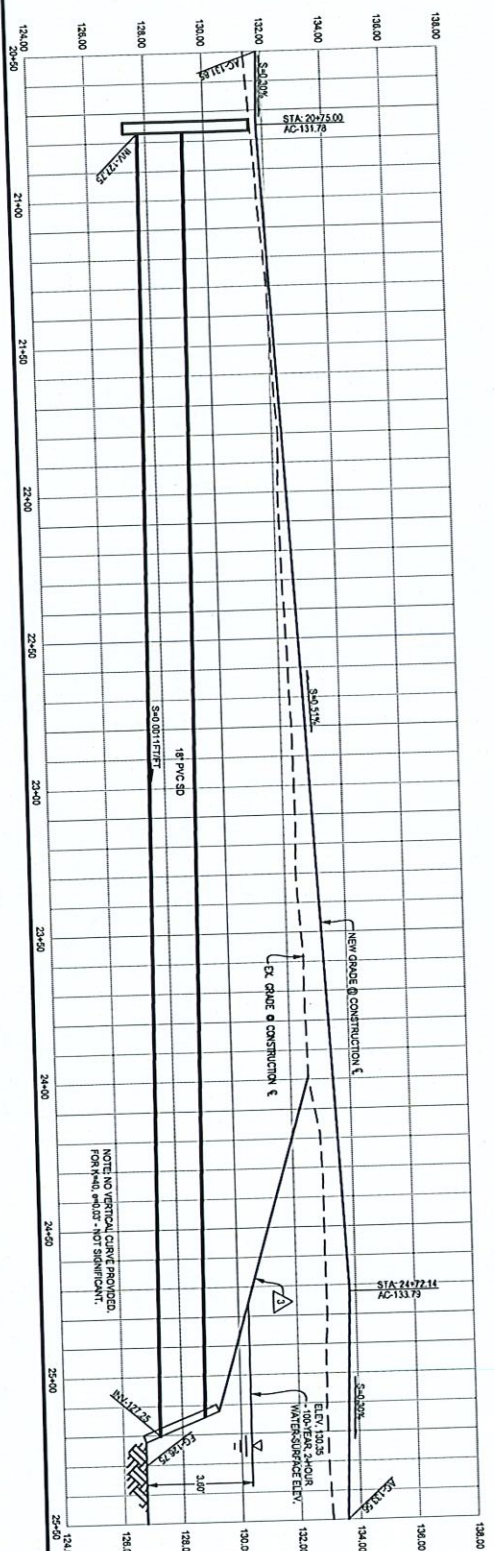
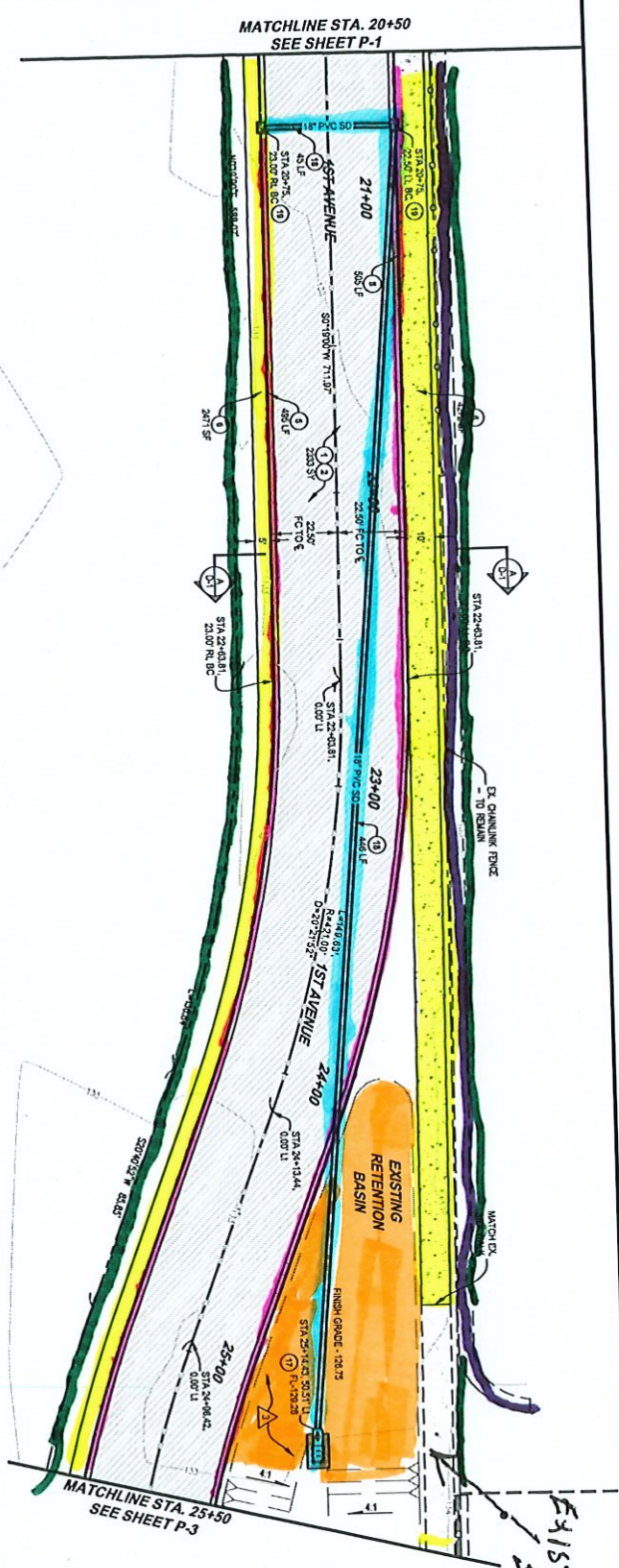
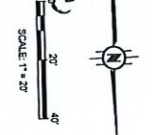


CURBING
 SIDEWALK
 RETENTION BASIN
 ELECTRICAL
 FENILING



CONSTRUCTION NOTES

NO.	DESCRIPTION	DATE
1	GRADING FOR PAVEMENT	5/1/2023
2	PRELIMINARY PROPOSED GRADING	5/1/2023
3	VERTICAL CURVE AND CENTER	5/1/2023
4	CITY OF YUMA STD. NO. 3-200	5/1/2023
5	CITY OF YUMA STD. NO. 3-150	5/1/2023
6	OUTLET HEADWALL	5/1/2023
7	VERTICAL CURVE AND CENTER	5/1/2023
8	VERTICAL CURVE AND CENTER	5/1/2023
9	CITY OF YUMA STD. NO. 1-4-010	5/1/2023



JAMES DAVEY AND ASSOCIATES
 CONSULTING CIVIL ENGINEERS
 1723 W. 24th Street, Suite 2, Yuma, AZ 85504 - (928) 782-3292

GADSDEN ELEMENTARY SCHOOL DISTRICT
 EXTENSION OF 1ST AVENUE - PHASE 2

1st AVENUE
 PLAN AND PROFILE
 STA 20+50 TO STA 25+50

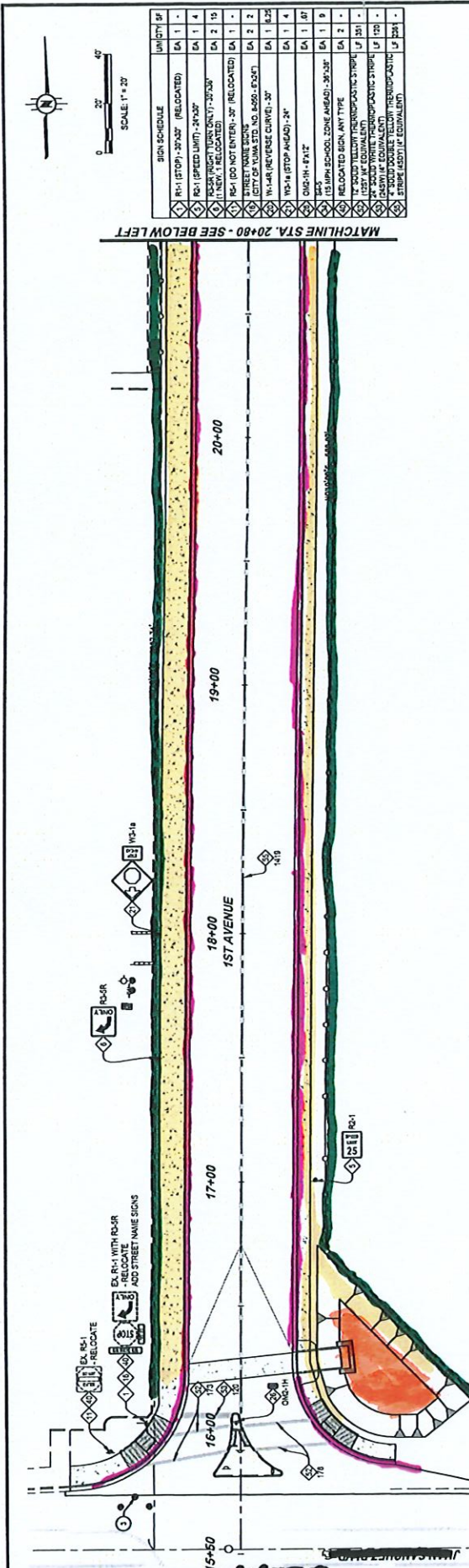
PREPARED FOR: GADSDEN DISTRICT #2
 1350 E. JUAN SANCHEZ BLVD
 SUITE 100, AZ 85503

DESIGNED BY: J.D.
 DRAWN BY: J.C.C.
 APPROVED BY: J.V.O.

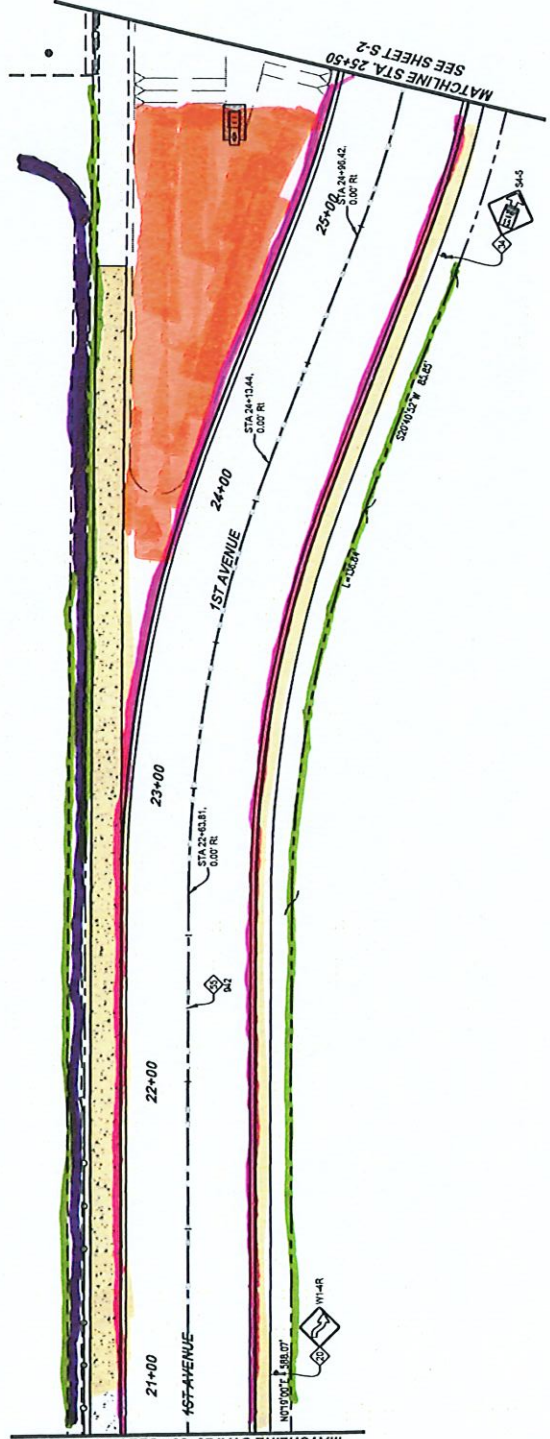
SHEET 122
 MARCH 06, 2023

CD-02

CEAR CHAVEZ BLVD



MATCHLINE STA. 20+00 - SEE BELOW LEFT



MATCHLINE STA. 20+80 - SEE ABOVE RIGHT

MATCHLINE STA. 25+50
SEE SHEET S-2

JAMES DAVEY AND ASSOCIATES
CONSULTING CIVIL ENGINEERS
1225 W. 24th Street, Suite 2 - YUMA, AZ 85304 - (928) 782-7328

GADDEN ELEMENTARY SCHOOL DISTRICT
EXTENSION OF 1ST AVENUE - PHASE 2

1st AVENUE
SIGNING AND STRIPING PLAN
BEGIN PROJECT TO STA 25+50

PREPARED FOR:
GADDEN ELEMENTARY SCHOOL DISTRICT
1305 E. JUAN SANCHEZ BLVD
SAN LUIS, AZ 85349

DESIGNED BY: J.V.D.
DRAWN BY: J.V.D.
APPROVED BY: J.V.D.

SHEET S-1
MARCH 06, 2023