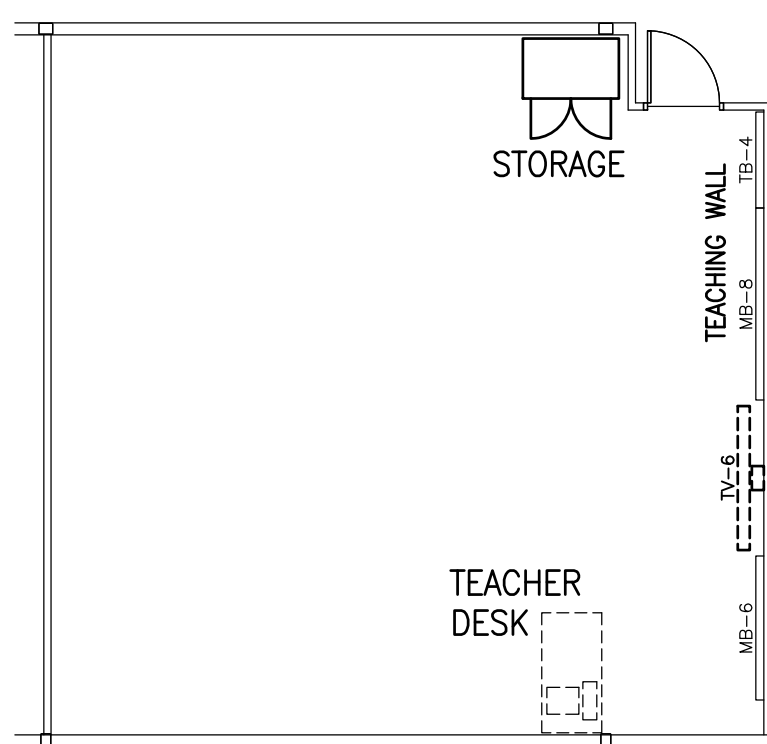
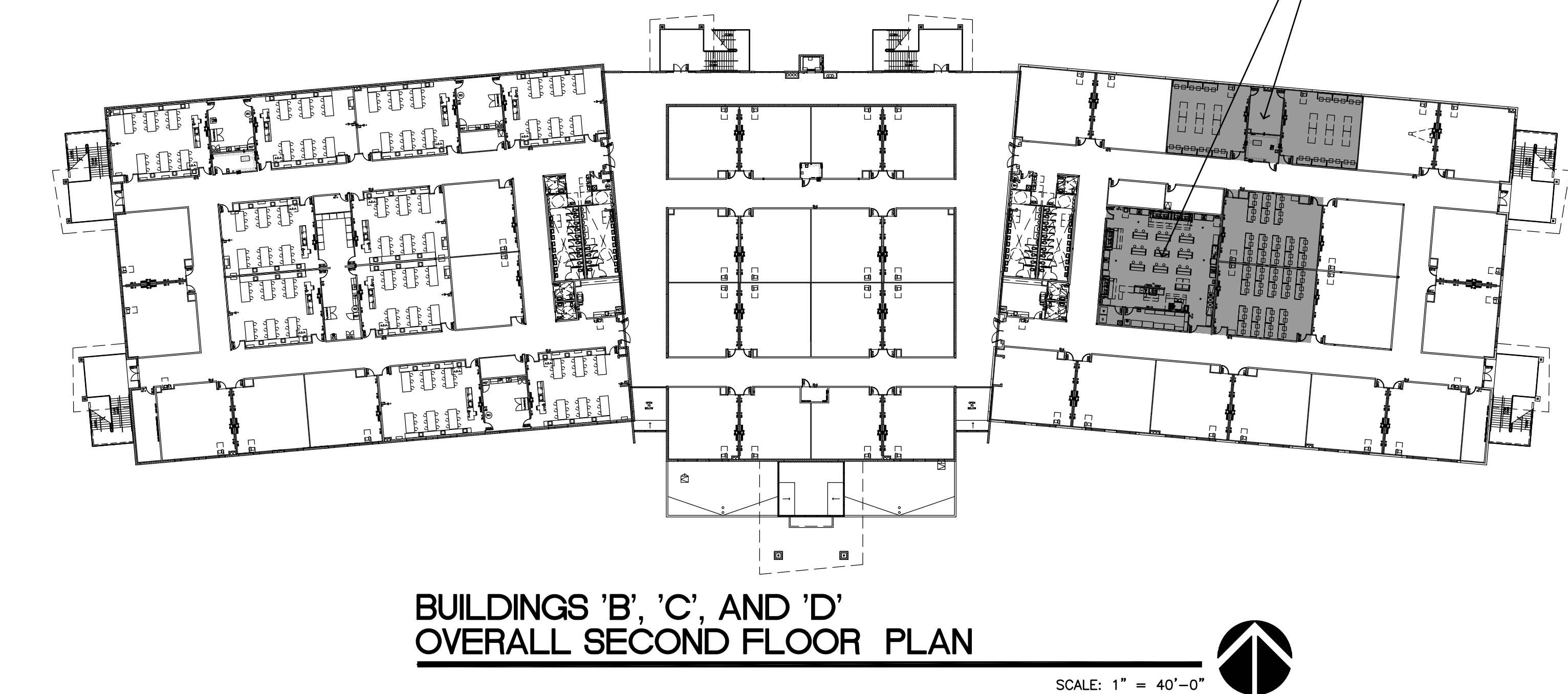
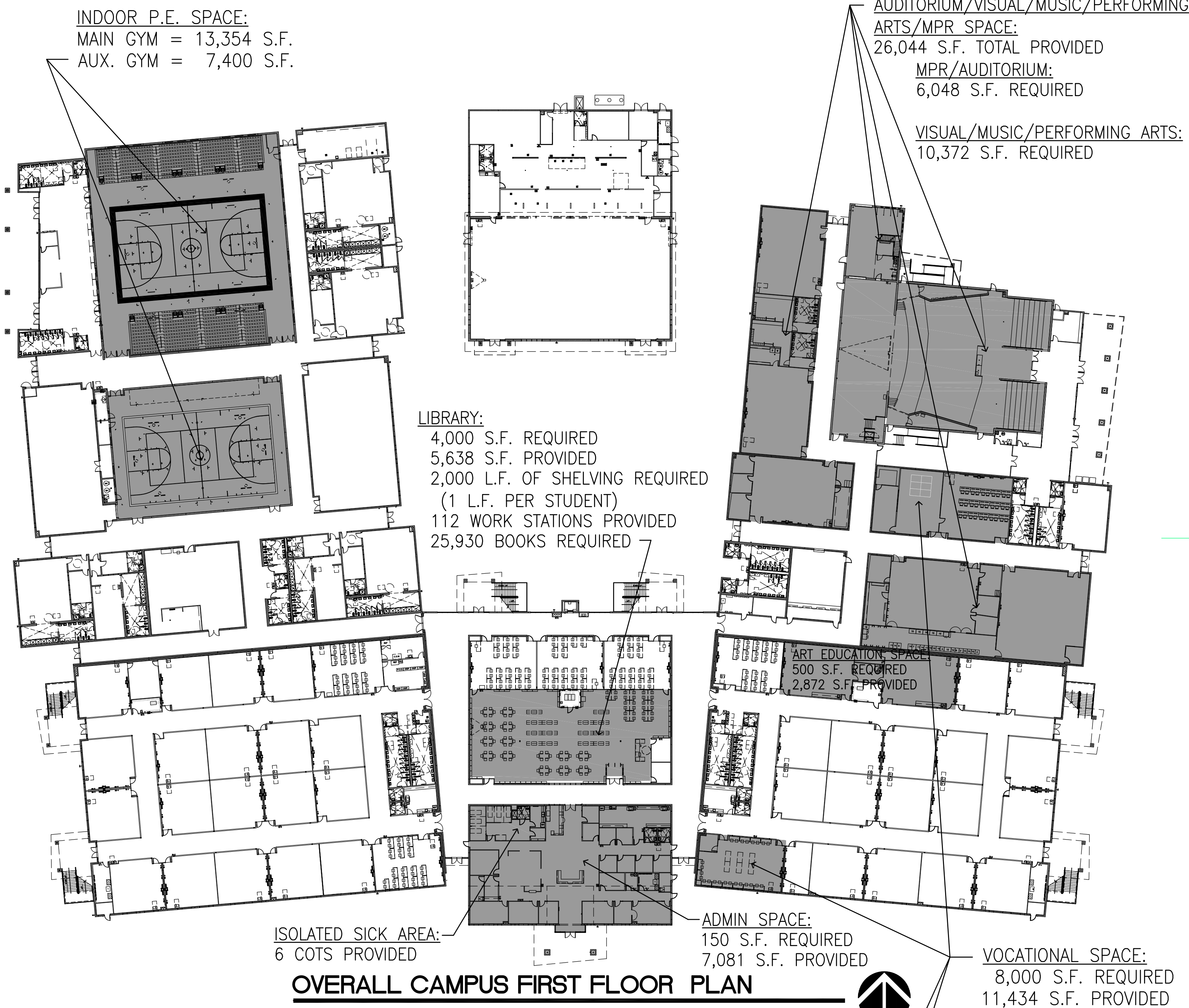


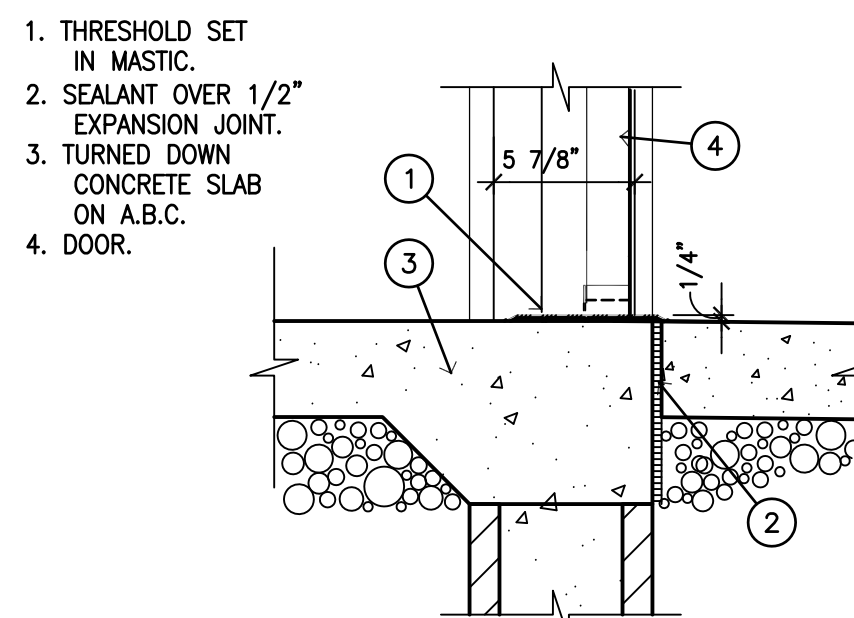
S.F.B. REQUIREMENTS:

- R7-6-205(D) - Provide a detail that depicts a minimum of 1/2" below the finish floor elevation and all exterior grades/sidewalks, especially at thresholds, to help prevent future water intrusion. DETAIL PROVIDED. SEE DETAIL 3/SFB-1.
- R7-6-210(D) - Classroom space 25 SF per student grade 9 through 12. CLASSROOM SPACES MEET OR EXCEED THE REQUIRED AMOUNT. SEE SHEETS A010, A020, A030, A040, A050, A060, AND A070 FOR ALL ROOM SQUARE FOOTAGE.
- R7-6-211(A) - Each classroom shall have one work space per student. CLASSROOM SPACES MEET OR EXCEED THE REQUIRED AMOUNT.
- R7-6-211(C) - Storage for classroom materials. Each classroom shall have one work space per student. STORAGE SPACES MEET OR EXCEED THE REQUIRED AMOUNT. SEE DETAIL 4/SFB-1, TYPICAL CLASSROOM LAYOUT.
- R7-6-212(A) - Minimum of 50 foot candles in each classroom is required. If LED lights are being used you may provide an exception request provided by your Board. (30 foot candles for LED) CLASSROOM SPACES MEET OR EXCEED THE REQUIRED AMOUNT. SEE ELECTRICAL DRAWINGS.
- R7-6-213(A) - Classroom Temperature: shall have a HVAC system capable of maintaining a temperature between 68 and 82 degrees (F) under normal conditions. CLASSROOM SPACES MEET OR EXCEED THE REQUIRED AMOUNT. SEE ELECTRICAL DRAWINGS.
- R7-6-214(A) - Classroom Acoustics: shall be maintainable at a sustained background sound level of less than 55 decibels. CLASSROOM SPACES MEET OR EXCEED THE REQUIRED AMOUNT.
- R7-6-215(A) - Classroom Air Quality: shall have a HVAC system capable of maintaining a CO2 level of not more than 800 PPM above the ambient CO2 level. CLASSROOM SPACES MEET OR EXCEED THE REQUIRED AMOUNT. SEE ELECTRICAL DRAWINGS.
- R7-6-216 - Education Classroom Facilities for Disabled Students: shall have space or access to space capable of being used for the education programs of disabled students. CLASSROOM SPACES MEET OR EXCEED THE REQUIRED AMOUNT. SEE DETAIL 4/SFB-1, TYPICAL CLASSROOM LAYOUT.
- R7-6-220(C) - Middle, Junior high, high school library 20 SF per student for 10% of student body, minimum 1200 SF. LIBRARY SPACES MEET OR EXCEED THE REQUIRED AMOUNT. 4,000 SF REQUIRED. SEE SHEET A230.
- R7-6-221(A)(A1) - One linear foot of book shelf per student is required. LIBRARY SPACES MEET OR EXCEED THE REQUIRED AMOUNT. 2,000 LF REQUIRED. SEE SHEET A230.
- R7-6-221(A)(2&3) - One work surface & seat for every 20 students is required and the minimum is 15 and the maximum is 75. LIBRARY SPACES MEET OR EXCEED THE REQUIRED AMOUNT. 112 WORKSPACES PROVIDED. SEE SHEET A230.
- R7-6-227 - (1) Range with hood - provided in the Culinary but not the Kitchen. (1) Milk Refrigerator. CLASSROOM SPACES MEET OR EXCEED THE REQUIRED AMOUNT. SEE FOOD SERVICE DRAWINGS AND SHEET A242.
- R7-6-230 - Auditorium, multipurpose rooms to accommodate 1/3 of the student body, minimum of 7 SF per student for 1/3 of student body, may have more than one function. AUDITORIUM, MULTIPURPOSE ROOMS MEET OR EXCEED THE REQUIRED AMOUNT. SEE SHEET SFB-1.
- R7-6-245(A)(1) - Grades 9 through 12 requires 4 SF per student additional space. CLASSROOM SPACES MEET OR EXCEED THE REQUIRED AMOUNT. SEE SHEETS A010, A020, A030, A040, A050, A060, AND A070 FOR ALL ROOM SQUARE FOOTAGE.
- R7-6-245(B) - Grades 5 through 12 requires equipment per R7-6-246. CLASSROOM SPACES MEET OR EXCEED THE REQUIRED AMOUNT.
- R7-6-246(A) - Grades 9 through 12 shall have, one demonstration table surface per 250 students, six laboratory stations per 250 students, one fume hood, one chemical storage unit per 1,000 students, one eye wash/shower per 250 students, one dissecting microscope per 25 students, minimum of the lesser of 12 or 1/2 of the number of eligible students, one refrigerator. CLASSROOM SPACES MEET OR EXCEED THE REQUIRED AMOUNT. SEE SCIENCE CLASSROOMS, SHEET A221.
- R7-6-246(B) - Grades 5 through 12 shall have, one sink per 250 students, one compound microscope per 25 students, minimum of the lesser of 12 or 1/2 of the number of eligible students, one balance per 250. CLASSROOM SPACES MEET OR EXCEED THE REQUIRED AMOUNT. SEE SCIENCE CLASSROOMS. SHEET A221.
- R7-6-247(B) - Grades 7 through 12 shall have 4 SF per student of art education space. ART EDUCATION SPACES MEET OR EXCEED THE REQUIRED AMOUNT. 6,000 SF REQUIRED. 2,872 PROVIDED. SEE SHEET A241.
- R7-6-248(A) - Grades 7 through 12 shall have space for vocational education space. VOCATIONAL EDUCATION SPACES MEET OR EXCEED THE REQUIRED AMOUNT. SEE SHEET SFB-1.
- R7-6-248(B) - Grades 7 through 12 shall have 4 SF per student of vocational education space. VOCATIONAL EDUCATION SPACES MEET OR EXCEED THE REQUIRED AMOUNT. SEE SHEET SFB-1.
- R7-6-249(B) - Physical education equipment shall be: One basketball court and two goals per 300 students, four courts maximum. PHYSICAL EDUCATION EQUIPMENT MEET OR EXCEED THE REQUIRED AMOUNT. SEE SHEETS SFB-1, A210, AND A211.
- R7-6-255(B) - Parent workspace, if required, one SF per student with 150 SF minimum and 800 maximum. PARENT WORKSPACES MEET OR EXCEED THE REQUIRED AMOUNT. 150 SF REQUIRED. SEE SHEET A241.
- R7-6-256 - Two-way internal communication system required. COMMUNICATION SYSTEM MEETS OR EXCEED THE REQUIRED AMOUNT. SEE SPECIAL SYSTEMS DRAWINGS.
- R7-6-257 - Fire alarm system required. FIRE ALARM SYSTEM PROVIDED.
- R7-6-258(A) - Administrative space shall be: 150 SF for school administrator/General administrative purposes an additional 1.5 SF per student, minimum 150 SF, maximum 2,500 SF, the maximum may be exceeded. ADMINISTRATIVE SPACES MEET OR EXCEED THE REQUIRED AMOUNT. 150 SF REQUIRED, 7,081 SF PROVIDED.
- R7-6-258(C) - Faculty works space required, 1 SF per student, minimum 150 SF, maximum 800 SF, the maximum may be exceeded. FACULTY WORKSPACES MEET OR EXCEED THE REQUIRED AMOUNT. 150 SF REQUIRED. SEE DETAIL 4/SFB-1, TYP. CLASSROOM LAYOUT, AND SHEETS A220, A221, A240, AND A241 FOR FACULTY WORKROOMS.
- R7-6-261 - Provide energy savings that meets SFB funding criteria. SPACES MEET OR EXCEED THE REQUIRED AMOUNT.
- R7-6-271(1) - The exterior envelope. walls & roof shall be weather tight. The doors & windows shall be weather tight. SEE BUILDING DETAILS 1 AND 2/SFB-1 AND TYPICAL ROOFING DETAILS, SHEET A903.
- R7-6-271(3) - Interior finishes shall be free of lead paint & asbestos. INTERIOR SPACES MEET OR EXCEED THE REQUIRED AMOUNT.
- R7-6-275 - Minimum gross square footages, verify with School Finance Specialist (verify if geographical modifications are required per R7-6-302). MINIMUM SQUARE FOOTAGES MEET OR EXCEED THE REQUIRED AMOUNT.
- R7-6-285 - Guideline Exception
- A.R.S. 34-451 - Provide Comcheck for Envelope, HVAC. COMCHECK FOR ENVELOPE, HVAC PROVIDED.
- A.R.S. 34-451 - HVAC shall comply with ASHRAE-90-1. HVAC COMPLIES WITH ASHRAE-90-1. SEE MECHANICAL PLANS.
- ASHRAE 62.1 - Provide outside air calculations. OUTSIDE AIR CALCULATIONS PROVIDED. SEE MECHANICAL PLANS.
- ASHRAE 62.1 Table B-2 - Low VOC on all applicable materials (finishes and adhesives). MATERIALS MEET OR EXCEED THE REQUIRED AMOUNT.
- ASHRAE 62.1 5.4 - Note the air stream surfaces to be mold resistant within the first 10' of the duct from the HVAC unit. NOTE PROVIDED. SEE MECHANICAL PLANS.
- A.R.S. 15-156 - No application of diisocyanates while building is occupied by student or teacher (foam roof).
- Policy - SFB Project Number on all sheets and documents.
- Policy - Roofing system submittal at DD (comply with SFB performance specifications).
- Policy - Provide a drawing of adjacent ways,
- Policy - Soil remediation (if required).
- Policy - Provide Rilem tube testing for all exterior walls which includes the back of parapets in your specifications.
- Recommend - If elevator is required, use limited use, limited application (LULA).
- Recommend - Landscaping sprinkler main water lines minimum 10'-0" from face of building/foundation.
- E0-2005-05 - Provide scorecard showing that this project meets LEED silver.



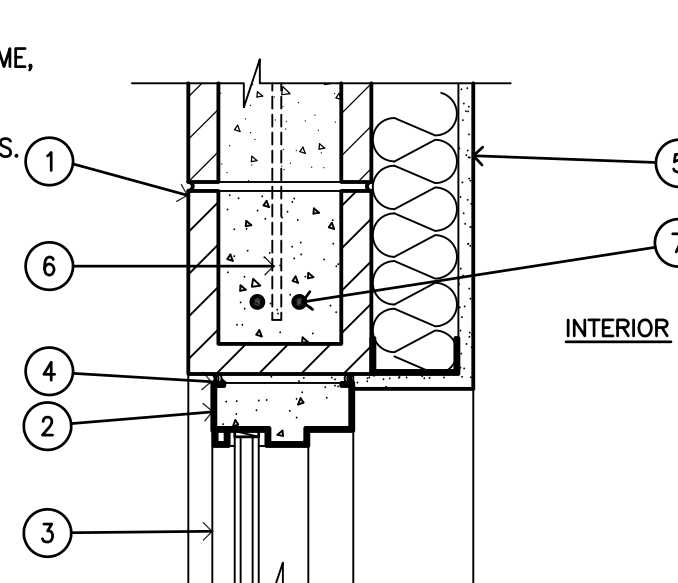
TYPICAL CLASSROOM

SCALE: 1/8" = 1'-0"



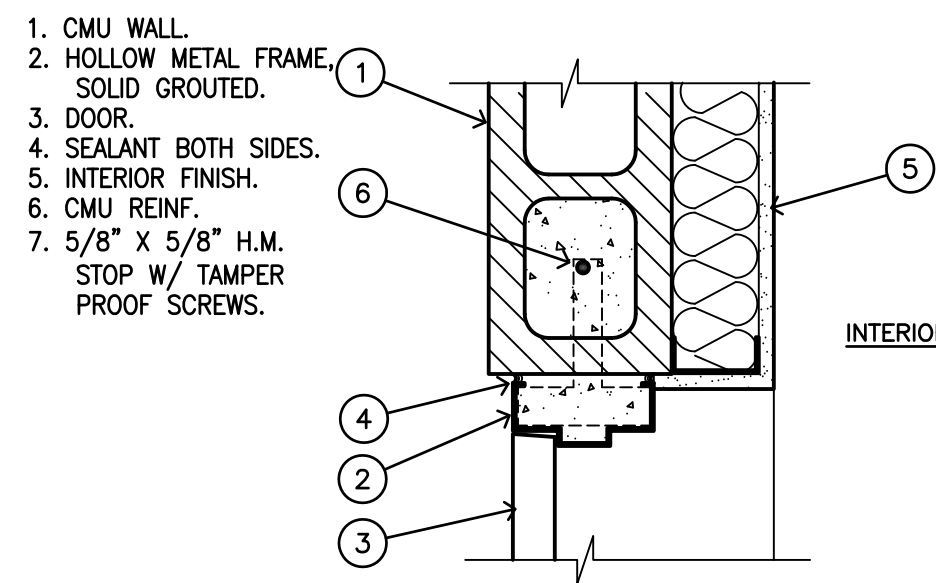
TYP. EXTERIOR THRESHOLD

SCALE: 1 1/2" = 1'-0"



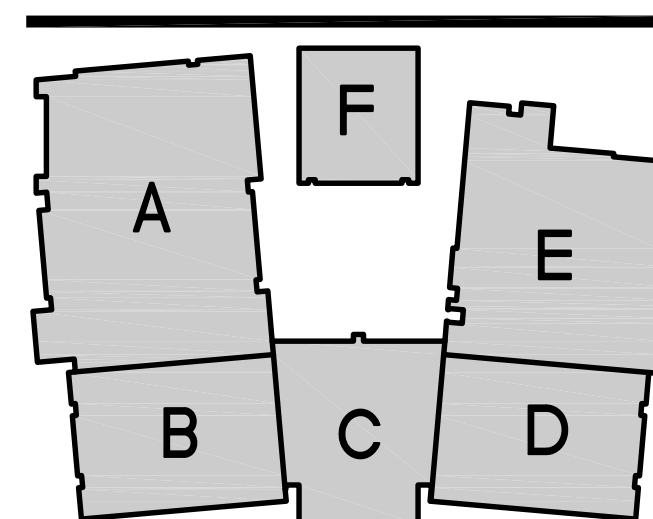
HM GLASS HEAD (JAMB SIM)

SCALE: 1 1/2" = 1'-0"



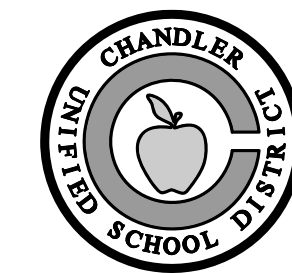
HM DOOR HEAD (JAMB SIM)

SCALE: 1 1/2" = 1'-0"



KEY PLAN

N.T.S.



CHANDLER UNIFIED SCHOOL DISTRICT NO. 80

HIGH SCHOOL NO. 7 -

SFB PACKAGE

22651 S. GILBERT RD. CHANDLER, ARIZONA 85249

SFB NOs. 070280000-9999-033N and 070280000-9999-035N



Job No. 1913
Drawn AJD
Checked BRS
Date 03-24-20
Revised

S.F.B.
SET

HDA ARCHITECTS, LLC.
459 N. Gilbert Road, Suite C-200, GILBERT, AZ 85234
TEL: (480) 539 8800 FAX: (480) 539 8608

S.F.B. REQUIREMENTS



Sheet No.

SFB-1